

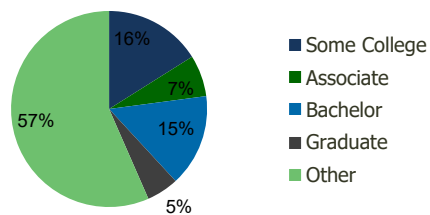
100400-Montebello Town Square Montebello, CA	1.00 Mile Radius	3.00 Mile Radius	5.00 Mile Radius	10.00 Mile Radius
---	---------------------	---------------------	---------------------	----------------------

Demographics (2021)

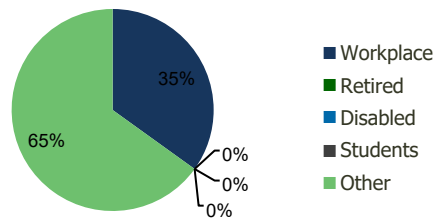
Current Population	11,816	211,984	613,403	2,651,379
Total Daytime Pop	11,899	209,800	700,037	2,829,524
Workplace Pop	3,711	73,277	229,393	1,062,522
Average Household Income	\$100,648	\$79,639	\$79,447	\$89,835
Median Household Income	\$82,809	\$61,167	\$61,124	\$66,305
Total Housing Units	3,925	61,102	175,275	776,994
Median Home Value	\$762,411	\$733,231	\$735,485	\$741,575
Bachelors Degree	24.5%	15.2%	14.8%	15.9%
Graduate Degree	9.9%	5.3%	5.5%	7.8%

Projections (2026)

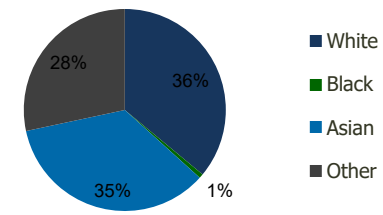
Projected Population	11,880	214,149	620,290	2,700,469
Projected 5 Year Pop Growth	0.1%	0.2%	0.2%	0.4%
Projected Households	3,952	61,758	177,269	797,270
Projected 5 Year Household Growth	0.1%	0.2%	0.2%	0.5%



Education (3-Mile)



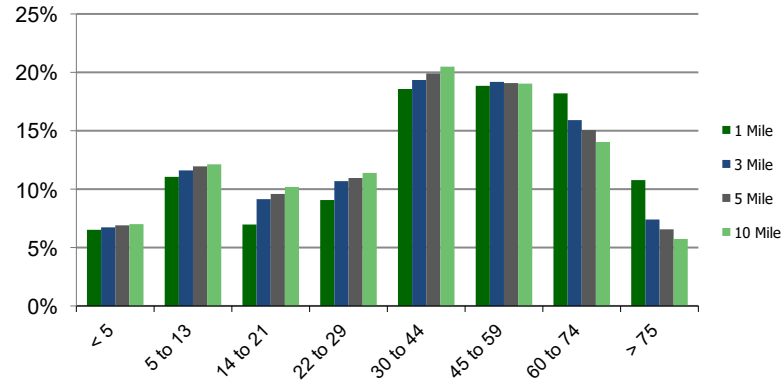
Daytime Population (3-Mile)



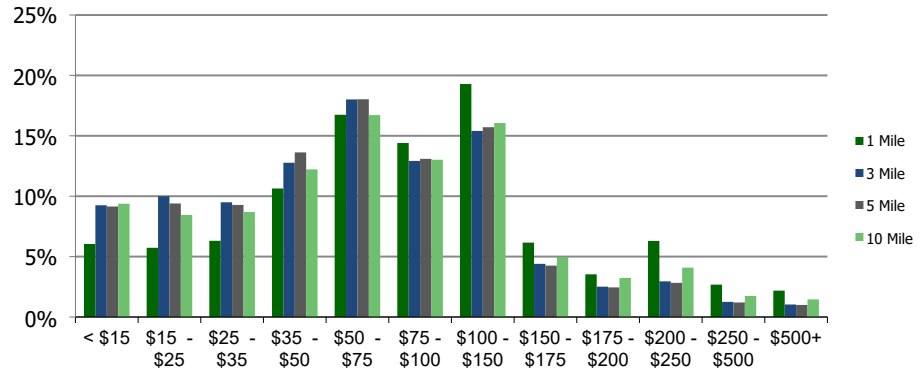
Ethnicity (3-Mile)

This report was produced using data from private and government sources deemed to be reliable and is herein provided without representation or warranty.

Population by Age Range



Household Income by Income Range (\$000)



	1.00 Mile Radius	3.00 Mile Radius	5.00 Mile Radius	10.00 Mile Radius
--	------------------	------------------	------------------	-------------------

	1.00 Mile Radius	3.00 Mile Radius	5.00 Mile Radius	10.00 Mile Radius
Population				
Current Estimated Population	11,816	211,984	613,403	2,651,379
2010 Census Population	12,396	211,194	611,212	2,605,577
2000 Census Population	12,410	212,042	613,176	2,587,124
Historical Annual Growth 2000 to 2010	-0.01%	-0.04%	-0.03%	0.07%
Estimated Annual Growth 2010 to 2020	-0.41%	0.03%	0.03%	0.15%
Projected Annual Growth 2020 to 2025	0.11%	0.20%	0.22%	0.37%
Households				
Current Estimated Households	3,925	61,102	175,275	776,994
2010 Census Households	4,096	60,808	174,570	754,263
2000 Census Households	4,059	60,139	172,615	730,955
Historical Annual Growth 2000 to 2010	0.1%	0.1%	0.1%	0.3%
Estimated Annual Growth 2010 to 2020	-0.4%	0.0%	0.0%	0.3%
Projected Annual Growth 2020 to 2025	0.1%	0.2%	0.2%	0.5%
Population per Household	3.0	3.4	3.5	3.4
Ethnicity				
White	38.0%	36.0%	38.6%	46.3%
Black or African American	1.2%	0.7%	0.9%	3.1%
Asian & Pacific Islander	42.4%	35.0%	29.2%	17.5%
Other Races	18.4%	28.3%	31.4%	33.1%
Hispanic or Latino Population	44.6%	58.6%	62.9%	65.9%
Non Hispanic or Latino Population	55.4%	41.4%	37.1%	34.1%

This report was produced using data from private and government sources deemed to be reliable and is herein provided without representation or warranty.