

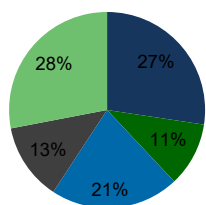
116130-Lincoln Hills Town Center Lincoln, CA	1.00 Mile Radius	3.00 Mile Radius	5.00 Mile Radius	10.00 Mile Radius
---	---------------------	---------------------	---------------------	----------------------

Demographics (2020)

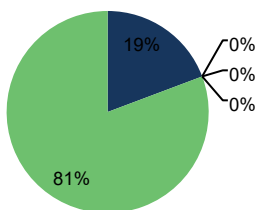
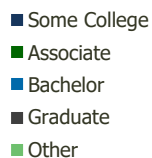
Current Population	11,924	49,538	83,470	275,978
Total Daytime Pop	13,158	47,419	88,461	340,243
Workplace Pop	3,469	9,140	19,245	123,668
Average Household Income	\$96,009	\$106,849	\$119,465	\$116,177
Median Household Income	\$80,244	\$86,120	\$98,585	\$93,824
Total Housing Units	4,329	18,777	30,209	102,228
Median Home Value	\$666,029	\$697,578	\$729,812	\$714,238
Bachelors Degree	15.7%	21.2%	25.9%	27.6%
Graduate Degree	11.1%	12.7%	14.3%	13.4%

Projections (2025)

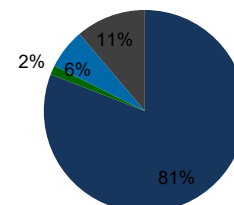
Projected Population	12,408	52,323	90,642	297,353
Projected 5 Year Pop Growth	0.8%	1.1%	1.7%	1.5%
Projected Households	4,491	19,725	32,625	109,731
Projected 5 Year Household Growth	0.7%	1.0%	1.6%	1.4%



Education (3-Mile)



Daytime Population (3-Mile)

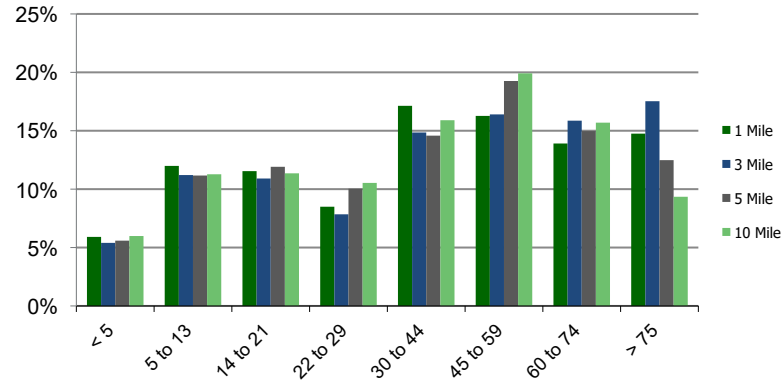


Ethnicity (3-Mile)

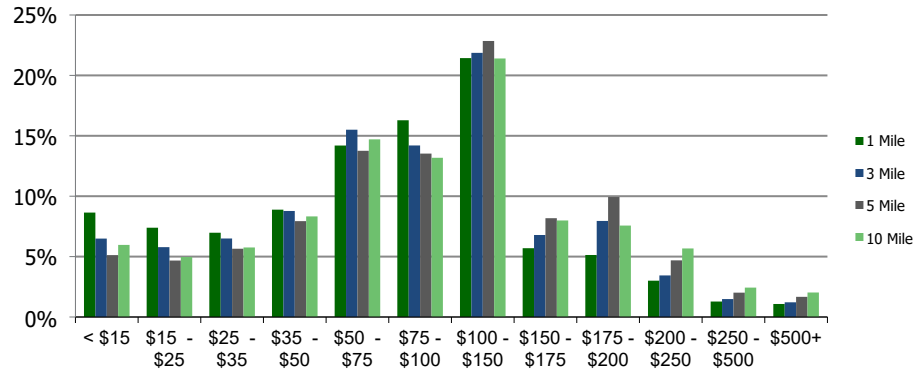


This report was produced using data from private and government sources deemed to be reliable and is herein provided without representation or warranty.

Population by Age Range



Household Income by Income Range (\$000)



116130-Lincoln Hills Town Center Lincoln, CA	1.00 Mile Radius	3.00 Mile Radius	5.00 Mile Radius	10.00 Mile Radius
--	-------------------------	-------------------------	-------------------------	--------------------------

Population	Current Estimated Population	11,924	49,538	83,470	275,978
	2010 Census Population	10,719	41,925	66,177	228,562
	2000 Census Population	4,796	11,922	24,591	134,070
	Historical Annual Growth 2000 to 2010	8.38%	13.40%	10.41%	5.48%
	Estimated Annual Growth 2010 to 2020	1.00%	1.56%	2.18%	1.77%
	Projected Annual Growth 2020 to 2025	0.80%	1.10%	1.66%	1.50%
Households	Current Estimated Households	4,329	18,777	30,209	102,228
	2010 Census Households	3,939	16,222	24,433	85,579
	2000 Census Households	1,655	4,108	8,301	50,172
	Historical Annual Growth 2000 to 2010	9.1%	14.7%	11.4%	5.5%
	Estimated Annual Growth 2010 to 2020	0.9%	1.4%	2.0%	1.7%
	Projected Annual Growth 2020 to 2025	0.7%	1.0%	1.6%	1.4%
	Population per Household	2.7	2.6	2.7	2.7
Ethnicity	White	75.6%	80.9%	80.2%	79.8%
	Black or African American	1.7%	1.5%	1.6%	1.8%
	Asian & Pacific Islander	5.1%	6.4%	8.4%	8.7%
	Other Races	17.6%	11.2%	9.9%	9.7%
	Hispanic or Latino Population	28.5%	19.7%	16.4%	14.4%
	Non Hispanic or Latino Population	71.5%	80.3%	83.6%	85.6%

This report was produced using data from private and government sources deemed to be reliable and is herein provided without representation or warranty.