

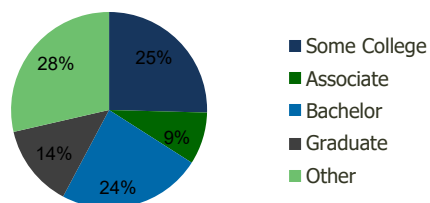
111670-Rancho San Diego El Cajon, CA	1.00 Mile Radius	3.00 Mile Radius	5.00 Mile Radius	10.00 Mile Radius
---	---------------------	---------------------	---------------------	----------------------

Demographics (2019)

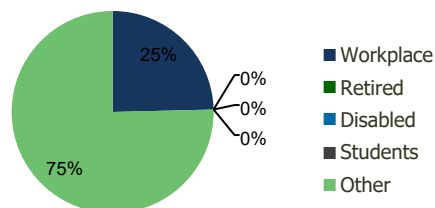
Current Population	11,237	61,461	212,877	886,703
Total Daytime Pop	21,717	70,222	204,592	818,287
Workplace Pop	4,398	17,282	65,176	207,969
Average Household Income	\$100,467	\$105,668	\$86,211	\$90,090
Median Household Income	\$82,464	\$85,562	\$66,154	\$71,692
Total Housing Units	4,430	21,727	72,923	296,914
Median Home Value	\$762,570	\$817,833	\$708,272	\$681,702
Bachelors Degree	29.1%	23.7%	17.4%	18.5%
Graduate Degree	13.9%	13.6%	9.0%	9.3%

Projections (2024)

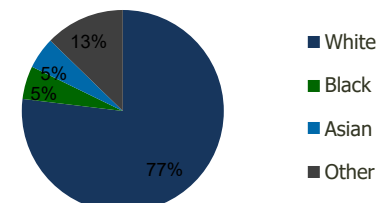
Projected Population	11,610	62,846	215,568	908,405
Projected 5 Year Pop Growth	0.7%	0.4%	0.3%	0.5%
Projected Households	4,592	22,219	73,857	303,791
Projected 5 Year Household Growth	0.7%	0.4%	0.3%	0.5%



Education (3-Mile)



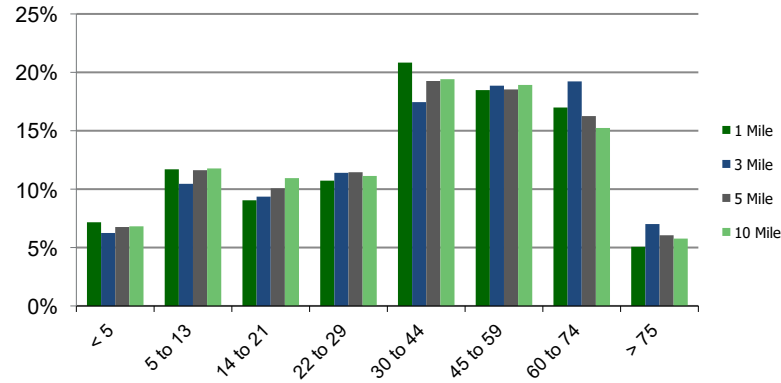
Daytime Population (3-Mile)



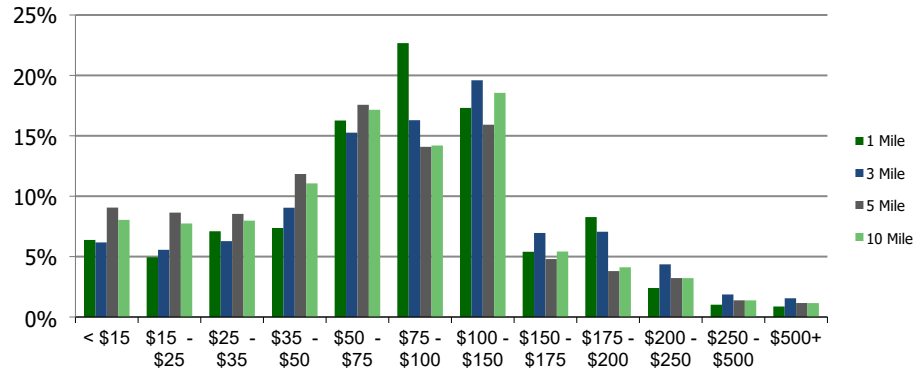
Ethnicity (3-Mile)

This report was produced using data from private and government sources deemed to be reliable and is herein provided without representation or warranty.

Population by Age Range



Household Income by Income Range (\$000)



111670-Rancho San Diego El Cajon, CA	1.00 Mile Radius	3.00 Mile Radius	5.00 Mile Radius	10.00 Mile Radius
--	-------------------------	-------------------------	-------------------------	--------------------------

Population	Current Estimated Population	11,237	61,461	212,877	886,703
	2010 Census Population	10,096	57,388	203,198	832,512
	2000 Census Population	9,556	53,305	192,046	765,143
	Historical Annual Growth 2000 to 2010	0.55%	0.74%	0.57%	0.85%
	Estimated Annual Growth 2010 to 2019	1.10%	0.71%	0.48%	0.65%
	Projected Annual Growth 2019 to 2024	0.65%	0.45%	0.25%	0.48%
Households	Current Estimated Households	4,430	21,727	72,923	296,914
	2010 Census Households	3,934	20,303	69,544	279,147
	2000 Census Households	3,458	18,939	67,820	261,268
	Historical Annual Growth 2000 to 2010	1.3%	0.7%	0.3%	0.7%
	Estimated Annual Growth 2010 to 2019	1.2%	0.7%	0.5%	0.6%
	Projected Annual Growth 2019 to 2024	0.7%	0.4%	0.3%	0.5%
	Population per Household	2.5	2.8	2.9	2.9
Ethnicity	White	78.4%	76.9%	69.6%	60.9%
	Black or African American	5.5%	5.3%	7.3%	8.5%
	Asian & Pacific Islander	5.7%	5.1%	4.6%	12.2%
	Other Races	10.3%	12.7%	18.5%	18.3%
	Hispanic or Latino Population	19.0%	21.2%	29.2%	33.2%
	Non Hispanic or Latino Population	81.0%	78.8%	70.8%	66.8%

This report was produced using data from private and government sources deemed to be reliable and is herein provided without representation or warranty.