

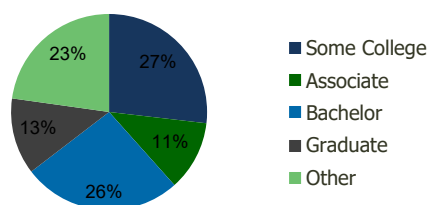
111550-Stanford Ranch Roseville, CA	1.00 Mile Radius	3.00 Mile Radius	5.00 Mile Radius	10.00 Mile Radius
--	---------------------	---------------------	---------------------	----------------------

## Demographics (2019)

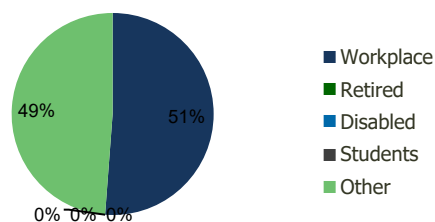
Current Population	15,241	105,293	235,676	655,368
Total Daytime Pop	18,165	149,622	308,560	666,374
Workplace Pop	9,190	76,589	129,759	233,360
Average Household Income	\$97,752	\$106,434	\$110,281	\$98,582
Median Household Income	\$84,261	\$86,641	\$87,949	\$75,985
Total Housing Units	5,862	39,748	87,776	241,458
Median Home Value	\$679,189	\$724,423	\$738,232	\$658,295
Bachelors Degree	27.2%	26.2%	26.6%	21.7%
Graduate Degree	12.7%	12.6%	12.6%	10.4%

## Projections (2024)

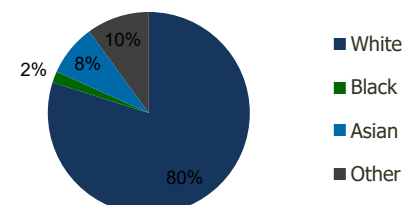
Projected Population	15,680	111,060	251,865	686,304
Projected 5 Year Pop Growth	0.6%	1.1%	1.3%	0.9%
Projected Households	6,027	41,827	93,570	252,609
Projected 5 Year Household Growth	0.6%	1.0%	1.3%	0.9%



Education (3-Mile)



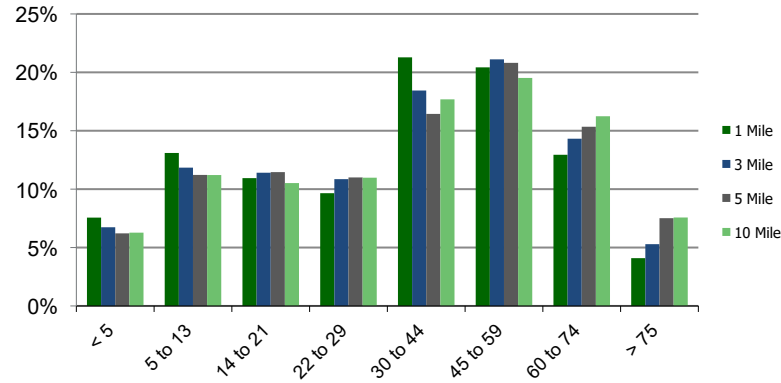
Daytime Population (3-Mile)



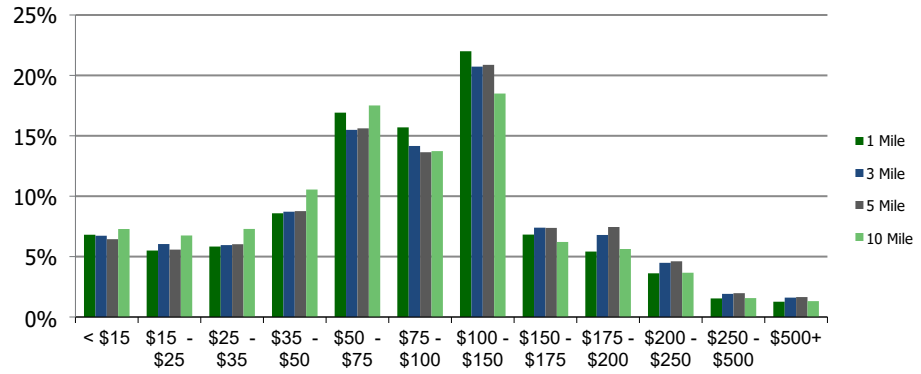
Ethnicity (3-Mile)

This report was produced using data from private and government sources deemed to be reliable and is herein provided without representation or warranty.

**Population by Age Range**



**Household Income by Income Range (\$000)**



<b>111550-Stanford Ranch</b> Roseville, CA	<b>1.00 Mile Radius</b>	<b>3.00 Mile Radius</b>	<b>5.00 Mile Radius</b>	<b>10.00 Mile Radius</b>
---	-------------------------	-------------------------	-------------------------	--------------------------

<b>Population</b>	Current Estimated Population	15,241	105,293	235,676	655,368
	2010 Census Population	14,132	92,628	201,941	590,634
	2000 Census Population	7,505	61,728	142,355	487,305
	Historical Annual Growth 2000 to 2010	6.53%	4.14%	3.56%	1.94%
	Estimated Annual Growth 2010 to 2019	0.78%	1.32%	1.60%	1.07%
	Projected Annual Growth 2019 to 2024	0.57%	1.07%	1.34%	0.93%
<b>Households</b>	Current Estimated Households	5,862	39,748	87,776	241,458
	2010 Census Households	5,440	35,106	75,639	218,054
	2000 Census Households	2,831	23,330	53,376	179,395
	Historical Annual Growth 2000 to 2010	6.7%	4.2%	3.5%	2.0%
	Estimated Annual Growth 2010 to 2019	0.8%	1.3%	1.5%	1.1%
	Projected Annual Growth 2019 to 2024	0.6%	1.0%	1.3%	0.9%
	Population per Household	2.6	2.6	2.7	2.7
<b>Ethnicity</b>	White	78.0%	79.9%	80.7%	78.0%
	Black or African American	2.3%	1.8%	1.8%	4.2%
	Asian & Pacific Islander	9.4%	8.2%	8.0%	6.8%
	Other Races	10.4%	10.1%	9.5%	11.0%
	Hispanic or Latino Population	14.0%	14.5%	13.7%	15.1%
	Non Hispanic or Latino Population	86.0%	85.5%	86.3%	84.9%

This report was produced using data from private and government sources deemed to be reliable and is herein provided without representation or warranty.