

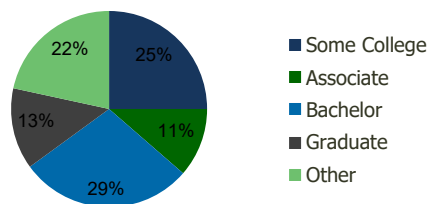
111550-Stanford Ranch Roseville, CA	1.00 Mile Radius	3.00 Mile Radius	5.00 Mile Radius	10.00 Mile Radius
--	---------------------	---------------------	---------------------	----------------------

## Demographics (2021)

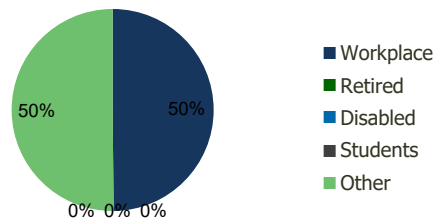
Current Population	15,257	106,300	239,818	667,522
Total Daytime Pop	17,831	151,504	310,044	659,451
Workplace Pop	8,669	75,513	126,186	222,103
Average Household Income	\$106,477	\$113,456	\$117,840	\$106,437
Median Household Income	\$93,726	\$92,768	\$94,018	\$82,196
Total Housing Units	5,867	40,109	89,271	245,907
Median Home Value	\$770,213	\$830,758	\$845,273	\$752,997
Bachelors Degree	28.9%	28.6%	28.3%	22.9%
Graduate Degree	13.1%	13.4%	13.4%	10.9%

## Projections (2026)

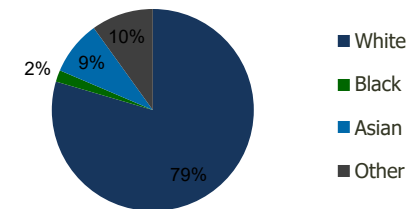
Projected Population	15,467	110,681	253,559	692,969
Projected 5 Year Pop Growth	0.3%	0.8%	1.1%	0.8%
Projected Households	5,943	41,670	94,157	255,000
Projected 5 Year Household Growth	0.3%	0.8%	1.1%	0.7%



Education (3-Mile)



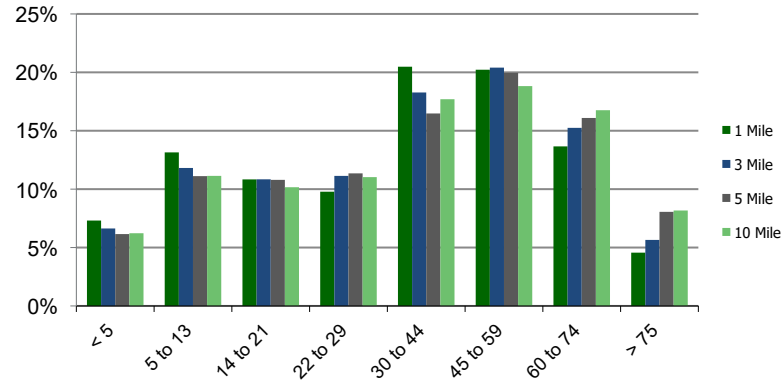
Daytime Population (3-Mile)



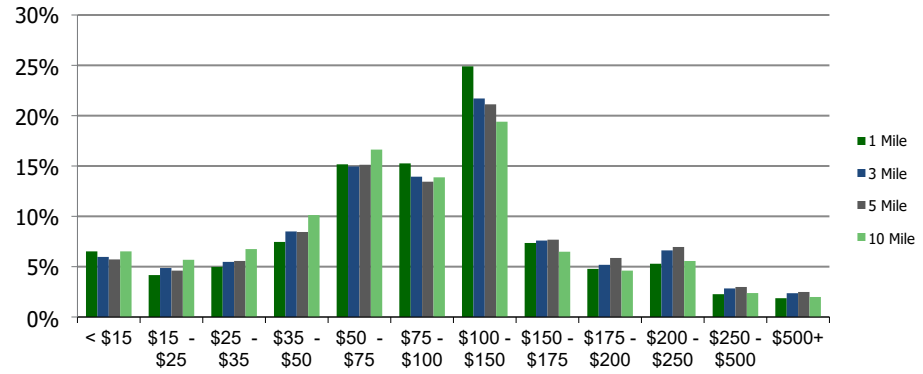
Ethnicity (3-Mile)

This report was produced using data from private and government sources deemed to be reliable and is herein provided without representation or warranty.

**Population by Age Range**



**Household Income by Income Range (\$000)**



**111550-Stanford Ranch**  
Roseville, CA

1.00 Mile  
Radius

3.00 Mile  
Radius

5.00 Mile  
Radius

10.00 Mile  
Radius

	1.00 Mile Radius	3.00 Mile Radius	5.00 Mile Radius	10.00 Mile Radius
<b>Population</b>				
Current Estimated Population	15,257	106,300	239,818	667,522
2010 Census Population	14,132	92,628	201,941	590,634
2000 Census Population	7,505	61,728	142,355	487,305
Historical Annual Growth 2000 to 2010	6.53%	4.14%	3.56%	1.94%
Estimated Annual Growth 2010 to 2020	0.65%	1.18%	1.47%	1.05%
Projected Annual Growth 2020 to 2025	0.27%	0.81%	1.12%	0.75%
<b>Households</b>				
Current Estimated Households	5,867	40,109	89,271	245,907
2010 Census Households	5,440	35,106	75,639	218,054
2000 Census Households	2,831	23,330	53,376	179,395
Historical Annual Growth 2000 to 2010	6.7%	4.2%	3.5%	2.0%
Estimated Annual Growth 2010 to 2020	0.6%	1.1%	1.4%	1.0%
Projected Annual Growth 2020 to 2025	0.3%	0.8%	1.1%	0.7%
Population per Household	2.6	2.6	2.7	2.7
<b>Ethnicity</b>				
White	77.5%	79.5%	80.4%	77.9%
Black or African American	2.3%	1.9%	1.9%	4.3%
Asian & Pacific Islander	9.6%	8.7%	8.3%	7.0%
Other Races	10.6%	9.9%	9.4%	10.8%
Hispanic or Latino Population	13.7%	14.6%	13.9%	15.5%
Non Hispanic or Latino Population	86.3%	85.4%	86.1%	84.5%

This report was produced using data from private and government sources deemed to be reliable and is herein provided without representation or warranty.