

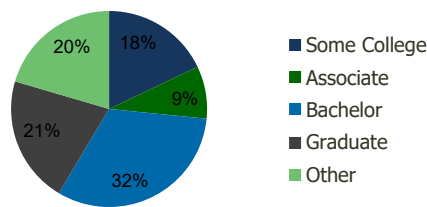
111950-Poway City Centre Poway, CA	1.00 Mile Radius	3.00 Mile Radius	5.00 Mile Radius	10.00 Mile Radius
---------------------------------------	---------------------	---------------------	---------------------	----------------------

### Demographics (2021)

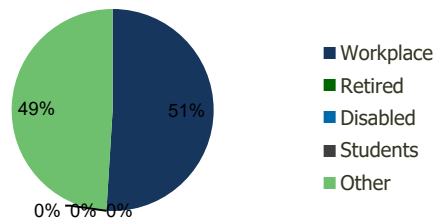
Current Population	11,822	56,255	138,976	456,722
Total Daytime Pop	14,310	64,471	137,056	515,375
Workplace Pop	8,202	32,865	56,664	209,416
Average Household Income	\$112,637	\$143,428	\$147,586	\$140,990
Median Household Income	\$92,520	\$116,573	\$118,408	\$112,058
Total Housing Units	4,071	18,845	50,127	159,710
Median Home Value	\$858,896	\$1,141,307	\$1,167,174	\$969,816
Bachelors Degree	27.9%	32.0%	34.3%	30.6%
Graduate Degree	12.0%	21.0%	24.4%	21.8%

### Projections (2026)

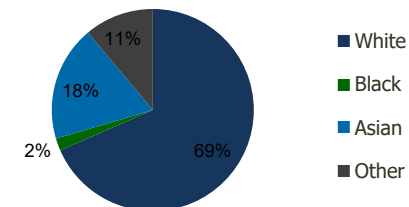
Projected Population	11,855	56,865	140,882	469,109
Projected 5 Year Pop Growth	0.1%	0.2%	0.3%	0.5%
Projected Households	4,084	19,050	50,789	163,927
Projected 5 Year Household Growth	0.1%	0.2%	0.3%	0.5%



Education (3-Mile)



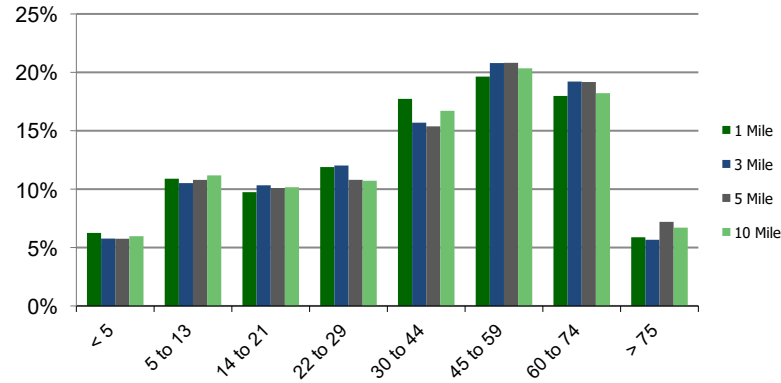
Daytime Population (3-Mile)



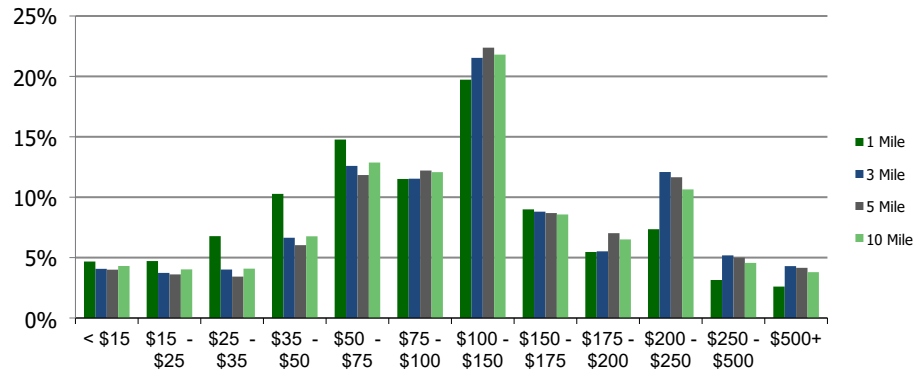
Ethnicity (3-Mile)

This report was produced using data from private and government sources deemed to be reliable and is herein provided without representation or warranty.

**Population by Age Range**



**Household Income by Income Range (\$000)**



**111950-Poway City Centre**  
Poway, CA

1.00 Mile  
Radius

3.00 Mile  
Radius

5.00 Mile  
Radius

10.00 Mile  
Radius

	1.00 Mile Radius	3.00 Mile Radius	5.00 Mile Radius	10.00 Mile Radius
<b>Population</b>	Current Estimated Population	11,822	56,255	138,976
	2010 Census Population	11,890	54,454	135,648
	2000 Census Population	12,009	52,684	128,402
	Historical Annual Growth 2000 to 2010	-0.10%	0.33%	0.55%
	Estimated Annual Growth 2010 to 2020	-0.05%	0.28%	0.21%
	Projected Annual Growth 2020 to 2025	0.06%	0.22%	0.27%
<b>Households</b>	Current Estimated Households	4,071	18,845	50,127
	2010 Census Households	4,086	18,255	49,049
	2000 Census Households	3,964	17,106	45,974
	Historical Annual Growth 2000 to 2010	0.3%	0.7%	0.6%
	Estimated Annual Growth 2010 to 2020	0.0%	0.3%	0.2%
	Projected Annual Growth 2020 to 2025	0.1%	0.2%	0.3%
	Population per Household	2.9	3.0	2.8
<b>Ethnicity</b>	White	71.6%	68.5%	66.7%
	Black or African American	2.1%	2.0%	2.2%
	Asian & Pacific Islander	10.6%	18.5%	21.2%
	Other Races	15.7%	11.1%	9.8%
	Hispanic or Latino Population	22.1%	15.3%	12.5%
	Non Hispanic or Latino Population	77.9%	84.7%	87.5%

This report was produced using data from private and government sources deemed to be reliable and is herein provided without representation or warranty.