

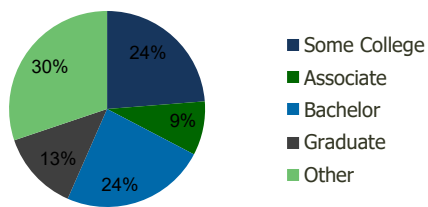
114110-Fire Mountain Center Oceanside, CA	1.00 Mile Radius	3.00 Mile Radius	5.00 Mile Radius	10.00 Mile Radius
--	---------------------	---------------------	---------------------	----------------------

Demographics (2021)

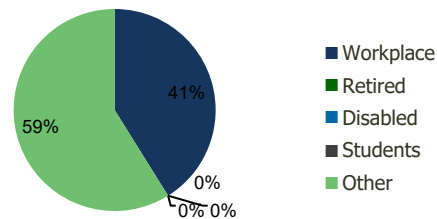
Current Population	10,059	114,763	239,755	514,052
Total Daytime Pop	14,136	141,165	271,295	591,099
Workplace Pop	8,825	58,056	113,206	232,316
Average Household Income	\$108,938	\$101,139	\$100,917	\$116,088
Median Household Income	\$85,203	\$77,940	\$79,426	\$86,423
Total Housing Units	4,152	43,817	85,609	177,951
Median Home Value	\$1,043,989	\$871,490	\$786,334	\$884,197
Bachelors Degree	26.9%	23.9%	22.1%	24.0%
Graduate Degree	20.3%	13.2%	12.2%	14.2%

Projections (2026)

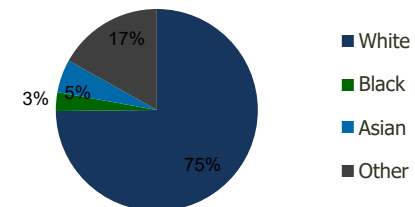
Projected Population	10,142	116,905	244,734	526,565
Projected 5 Year Pop Growth	0.2%	0.4%	0.4%	0.5%
Projected Households	4,184	44,582	87,363	182,297
Projected 5 Year Household Growth	0.2%	0.3%	0.4%	0.5%



Education (3-Mile)



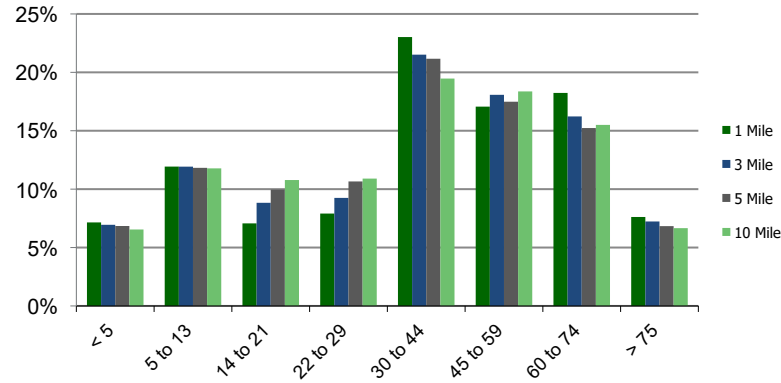
Daytime Population (3-Mile)



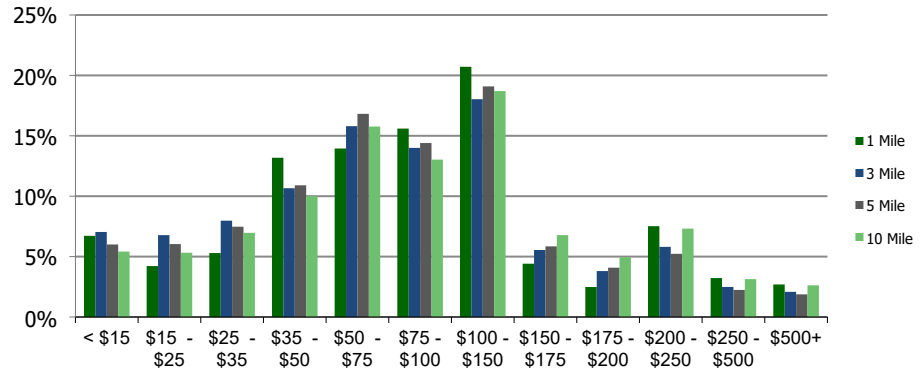
Ethnicity (3-Mile)

This report was produced using data from private and government sources deemed to be reliable and is herein provided without representation or warranty.

Population by Age Range



Household Income by Income Range (\$000)



114110-Fire Mountain Center Oceanside, CA	1.00 Mile Radius	3.00 Mile Radius	5.00 Mile Radius	10.00 Mile Radius
---	------------------	------------------	------------------	-------------------

Population	Current Estimated Population	10,059	114,763	239,755	514,052
	2010 Census Population	10,198	108,417	227,631	482,040
	2000 Census Population	9,945	107,362	217,192	426,153
	Historical Annual Growth 2000 to 2010	0.25%	0.10%	0.47%	1.24%
	Estimated Annual Growth 2010 to 2020	-0.12%	0.49%	0.44%	0.55%
	Projected Annual Growth 2020 to 2025	0.16%	0.37%	0.41%	0.48%
Households	Current Estimated Households	4,152	43,817	85,609	177,951
	2010 Census Households	4,231	41,549	81,481	166,955
	2000 Census Households	4,084	40,043	76,968	147,807
	Historical Annual Growth 2000 to 2010	0.4%	0.4%	0.6%	1.2%
	Estimated Annual Growth 2010 to 2020	-0.2%	0.5%	0.4%	0.5%
	Projected Annual Growth 2020 to 2025	0.2%	0.3%	0.4%	0.5%
	Population per Household	2.4	2.6	2.7	2.8
Ethnicity	White	78.8%	74.8%	73.2%	75.0%
	Black or African American	2.4%	3.0%	4.0%	3.2%
	Asian & Pacific Islander	7.5%	5.3%	6.2%	6.4%
	Other Races	11.3%	16.9%	16.5%	15.4%
	Hispanic or Latino Population	16.8%	32.8%	33.1%	32.5%
	Non Hispanic or Latino Population	83.2%	67.2%	66.9%	67.5%

This report was produced using data from private and government sources deemed to be reliable and is herein provided without representation or warranty.