

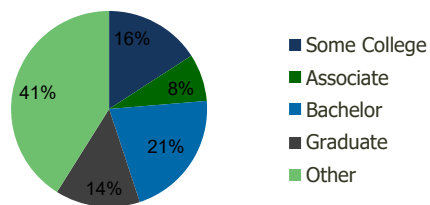
100300-Mill Basin Plaza Brooklyn, NY	1.00 Mile Radius	3.00 Mile Radius	5.00 Mile Radius	10.00 Mile Radius
---	---------------------	---------------------	---------------------	----------------------

Demographics (2020)

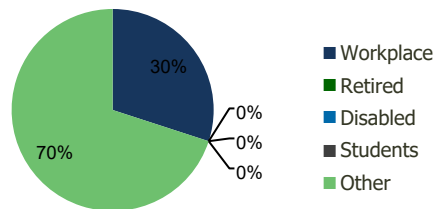
Current Population	46,080	532,035	1,624,932	4,583,302
Total Daytime Pop	38,449	479,861	1,411,599	5,201,707
Workplace Pop	12,638	143,970	403,769	2,279,470
Average Household Income	\$123,856	\$92,716	\$83,720	\$108,483
Median Household Income	\$94,956	\$68,777	\$58,255	\$72,161
Total Housing Units	16,564	190,882	582,656	1,723,817
Median Home Value	\$567,099	\$550,360	\$594,862	\$613,452
Bachelors Degree	22.4%	21.2%	19.5%	23.0%
Graduate Degree	15.9%	14.0%	12.5%	15.2%

Projections (2025)

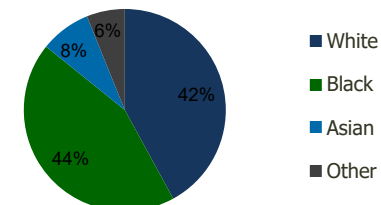
Projected Population	44,506	520,552	1,605,967	4,645,581
Projected 5 Year Pop Growth	-0.7%	-0.4%	-0.2%	0.3%
Projected Households	15,997	186,797	576,282	1,751,451
Projected 5 Year Household Growth	-0.7%	-0.4%	-0.2%	0.3%



Education (3-Mile)



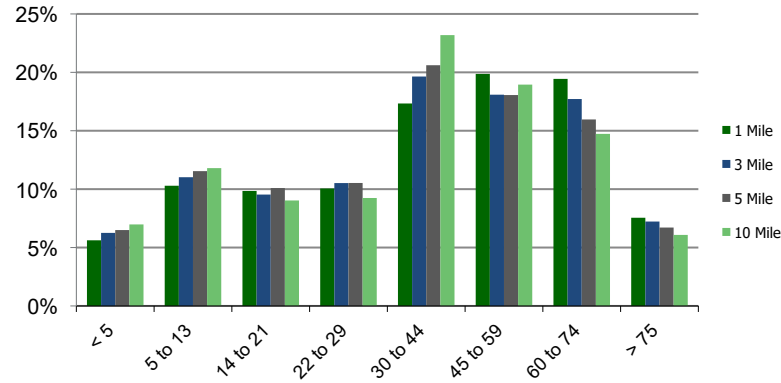
Daytime Population (3-Mile)



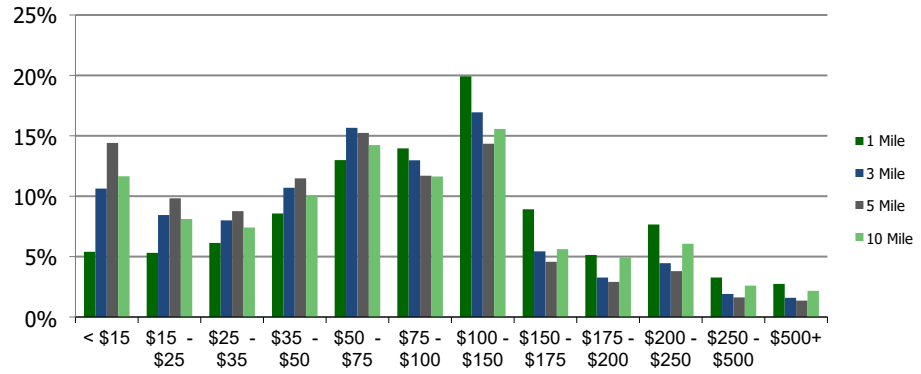
Ethnicity (3-Mile)

This report was produced using data from private and government sources deemed to be reliable and is herein provided without representation or warranty.

Population by Age Range



Household Income by Income Range (\$000)



100300-Mill Basin Plaza Brooklyn, NY	1.00 Mile Radius	3.00 Mile Radius	5.00 Mile Radius	10.00 Mile Radius
---	---------------------	---------------------	---------------------	----------------------

Population	Current Estimated Population	46,080	532,035	1,624,932	4,583,302
	2010 Census Population	48,884	552,127	1,648,104	4,482,081
	2000 Census Population	46,987	567,847	1,645,044	4,369,732
	Historical Annual Growth 2000 to 2010	0.40%	-0.28%	0.02%	0.25%
	Estimated Annual Growth 2010 to 2020	-0.55%	-0.34%	-0.13%	0.21%
	Projected Annual Growth 2020 to 2025	-0.69%	-0.44%	-0.23%	0.27%
Households	Current Estimated Households	16,564	190,882	582,656	1,723,817
	2010 Census Households	17,534	198,194	591,167	1,679,380
	2000 Census Households	17,103	199,288	580,859	1,615,646
	Historical Annual Growth 2000 to 2010	0.2%	-0.1%	0.2%	0.4%
	Estimated Annual Growth 2010 to 2020	-0.5%	-0.3%	-0.1%	0.2%
	Projected Annual Growth 2020 to 2025	-0.7%	-0.4%	-0.2%	0.3%
	Population per Household	2.8	2.8	2.8	2.6
Ethnicity	White	60.1%	42.0%	39.2%	45.0%
	Black or African American	27.3%	43.7%	40.2%	25.5%
	Asian & Pacific Islander	6.8%	8.1%	11.5%	15.2%
	Other Races	5.8%	6.1%	9.1%	14.3%
	Hispanic or Latino Population	9.5%	8.7%	13.8%	22.6%
	Non Hispanic or Latino Population	90.5%	91.3%	86.2%	77.4%

This report was produced using data from private and government sources deemed to be reliable and is herein provided without representation or warranty.