

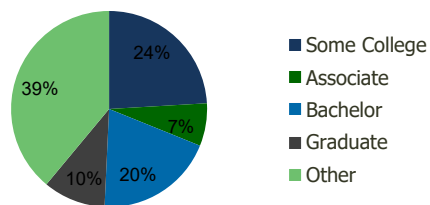
113140-Del Monte Plaza Reno, NV	1.00 Mile Radius	3.00 Mile Radius	5.00 Mile Radius	10.00 Mile Radius
------------------------------------	---------------------	---------------------	---------------------	----------------------

Demographics (2021)

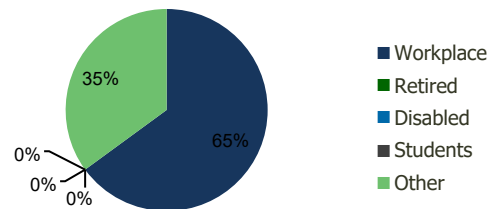
Current Population	7,443	74,324	166,157	380,676
Total Daytime Pop	26,939	120,565	269,377	483,128
Workplace Pop	21,083	78,302	170,951	235,454
Average Household Income	\$73,405	\$86,131	\$94,347	\$90,702
Median Household Income	\$52,062	\$57,754	\$62,558	\$64,745
Total Housing Units	3,039	30,644	70,596	151,173
Median Home Value	\$398,792	\$675,803	\$817,035	\$733,620
Bachelors Degree	14.5%	19.6%	21.7%	19.5%
Graduate Degree	9.7%	10.3%	13.7%	12.2%

Projections (2026)

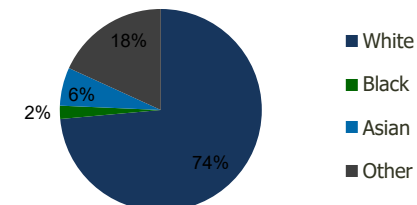
Projected Population	7,526	76,196	172,223	392,755
Projected 5 Year Pop Growth	0.2%	0.5%	0.7%	0.6%
Projected Households	3,078	31,482	72,996	155,919
Projected 5 Year Household Growth	0.3%	0.5%	0.7%	0.6%



Education (3-Mile)



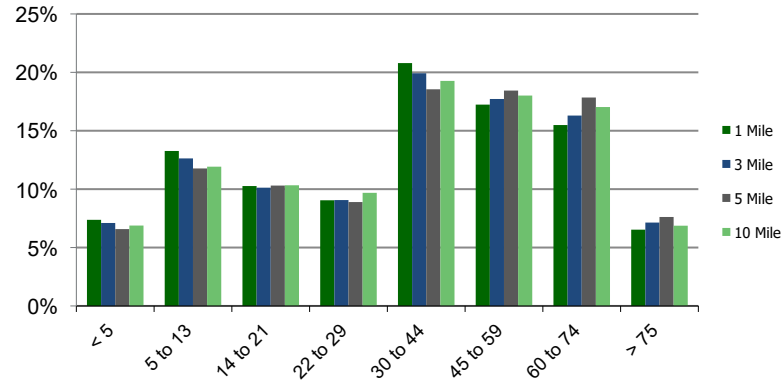
Daytime Population (3-Mile)



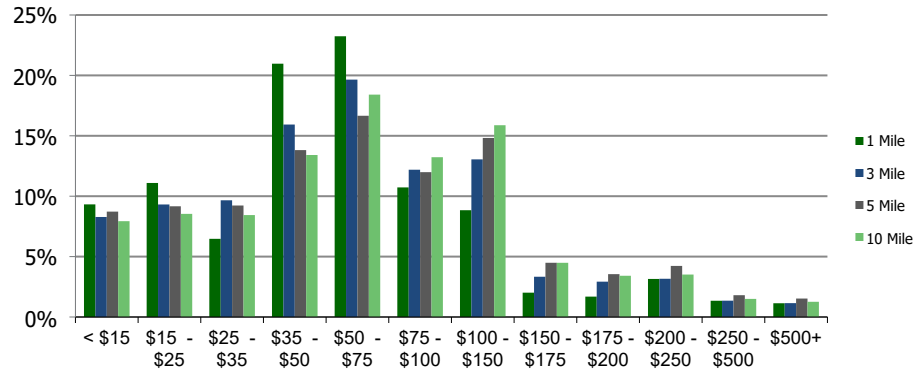
Ethnicity (3-Mile)

This report was produced using data from private and government sources deemed to be reliable and is herein provided without representation or warranty.

Population by Age Range



Household Income by Income Range (\$000)



113140-Del Monte Plaza
Reno, NV

1.00 Mile
Radius

3.00 Mile
Radius

5.00 Mile
Radius

10.00 Mile
Radius

	1.00 Mile Radius	3.00 Mile Radius	5.00 Mile Radius	10.00 Mile Radius
Population				
Current Estimated Population	7,443	74,324	166,157	380,676
2010 Census Population	6,622	64,706	142,981	331,690
2000 Census Population	6,558	62,148	126,980	280,714
Historical Annual Growth 2000 to 2010	0.10%	0.40%	1.19%	1.68%
Estimated Annual Growth 2010 to 2020	1.00%	1.19%	1.29%	1.18%
Projected Annual Growth 2020 to 2025	0.22%	0.50%	0.72%	0.63%
Households				
Current Estimated Households	3,039	30,644	70,596	151,173
2010 Census Households	2,688	26,525	60,951	131,459
2000 Census Households	2,951	26,133	54,559	111,000
Historical Annual Growth 2000 to 2010	-0.9%	0.1%	1.1%	1.7%
Estimated Annual Growth 2010 to 2020	1.1%	1.2%	1.3%	1.2%
Projected Annual Growth 2020 to 2025	0.3%	0.5%	0.7%	0.6%
Population per Household	2.4	2.4	2.3	2.5
Ethnicity				
White	68.1%	73.6%	77.2%	76.5%
Black or African American	2.6%	2.1%	2.3%	2.4%
Asian & Pacific Islander	8.1%	6.1%	5.9%	5.8%
Other Races	21.3%	18.2%	14.6%	15.2%
Hispanic or Latino Population	37.6%	32.6%	23.6%	23.9%
Non Hispanic or Latino Population	62.4%	67.4%	76.4%	76.1%

This report was produced using data from private and government sources deemed to be reliable and is herein provided without representation or warranty.