

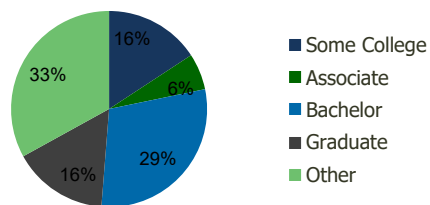
| 111600-Willowbrook Plaza<br>Wayne, NJ | 1.00 Mile<br>Radius | 3.00 Mile<br>Radius | 5.00 Mile<br>Radius | 10.00 Mile<br>Radius |
|---------------------------------------|---------------------|---------------------|---------------------|----------------------|
|---------------------------------------|---------------------|---------------------|---------------------|----------------------|

## Demographics (2020)

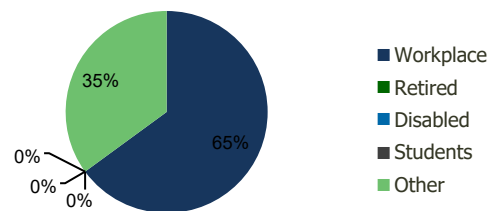
|                          |           |           |           |           |
|--------------------------|-----------|-----------|-----------|-----------|
| Current Population       | 7,502     | 64,650    | 275,128   | 1,414,464 |
| Total Daytime Pop        | 15,036    | 103,537   | 355,339   | 1,564,656 |
| Workplace Pop            | 10,753    | 67,247    | 154,381   | 700,990   |
| Average Household Income | \$129,216 | \$139,517 | \$129,614 | \$114,557 |
| Median Household Income  | \$96,276  | \$111,474 | \$95,121  | \$81,626  |
| Total Housing Units      | 2,980     | 23,061    | 96,799    | 509,436   |
| Median Home Value        | \$465,529 | \$567,855 | \$554,909 | \$496,700 |
| Bachelors Degree         | 26.1%     | 29.5%     | 26.1%     | 23.8%     |
| Graduate Degree          | 15.7%     | 15.7%     | 16.5%     | 14.4%     |

## Projections (2025)

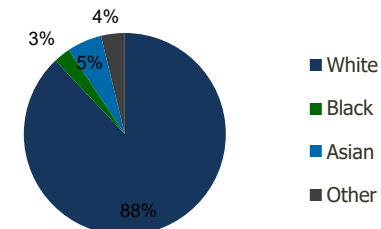
|                                   |       |        |         |           |
|-----------------------------------|-------|--------|---------|-----------|
| Projected Population              | 7,614 | 65,410 | 278,741 | 1,436,488 |
| Projected 5 Year Pop Growth       | 0.3%  | 0.2%   | 0.3%    | 0.3%      |
| Projected Households              | 3,025 | 23,351 | 98,175  | 517,763   |
| Projected 5 Year Household Growth | 0.3%  | 0.3%   | 0.3%    | 0.3%      |



Education (3-Mile)



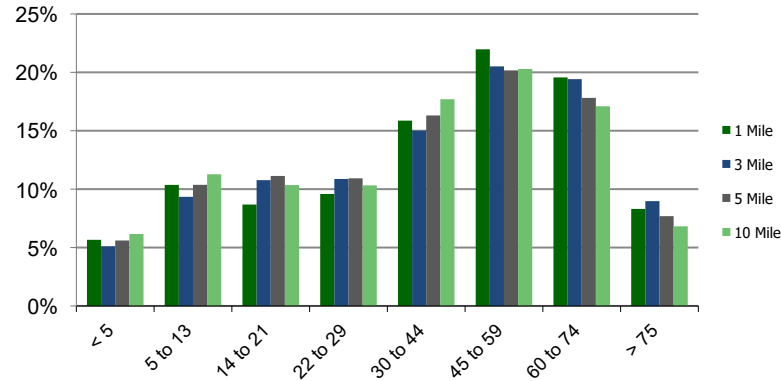
Daytime Population (3-Mile)



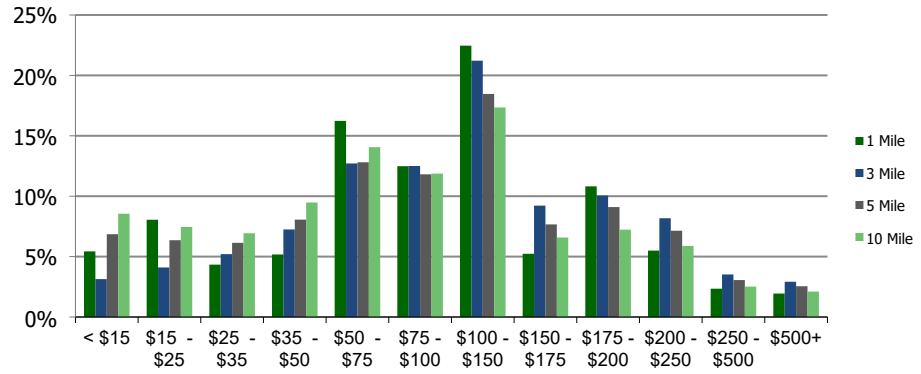
Ethnicity (3-Mile)

This report was produced using data from private and government sources deemed to be reliable and is herein provided without representation or warranty.

**Population by Age Range**



**Household Income by Income Range (\$000)**



| <b>111600-Willowbrook Plaza</b><br>Wayne, NJ | <b>1.00 Mile Radius</b> | <b>3.00 Mile Radius</b> | <b>5.00 Mile Radius</b> | <b>10.00 Mile Radius</b> |
|--|-------------------------|-------------------------|-------------------------|--------------------------|
|--|-------------------------|-------------------------|-------------------------|--------------------------|

|                   |                                       |       |        |         |           |
|-------------------|---------------------------------------|-------|--------|---------|-----------|
| <b>Population</b> | Current Estimated Population          | 7,502 | 64,650 | 275,128 | 1,414,464 |
|                   | 2010 Census Population                | 7,273 | 64,187 | 270,164 | 1,383,578 |
|                   | 2000 Census Population                | 7,050 | 62,034 | 263,492 | 1,367,535 |
|                   | Historical Annual Growth 2000 to 2010 | 0.31% | 0.34%  | 0.25%   | 0.12%     |
|                   | Estimated Annual Growth 2010 to 2020  | 0.29% | 0.07%  | 0.17%   | 0.21%     |
|                   | Projected Annual Growth 2020 to 2025  | 0.30% | 0.23%  | 0.26%   | 0.31%     |
| <b>Households</b> | Current Estimated Households          | 2,980 | 23,061 | 96,799  | 509,436   |
|                   | 2010 Census Households                | 2,880 | 22,853 | 94,821  | 497,060   |
|                   | 2000 Census Households                | 2,815 | 22,384 | 93,564  | 491,367   |
|                   | Historical Annual Growth 2000 to 2010 | 0.2%  | 0.2%   | 0.1%    | 0.1%      |
|                   | Estimated Annual Growth 2010 to 2020  | 0.3%  | 0.1%   | 0.2%    | 0.2%      |
|                   | Projected Annual Growth 2020 to 2025  | 0.3%  | 0.3%   | 0.3%    | 0.3%      |
|                   | Population per Household              | 2.5   | 2.6    | 2.7     | 2.7       |
| <b>Ethnicity</b>  | White                                 | 90.2% | 88.0%  | 73.7%   | 63.6%     |
|                   | Black or African American             | 2.3%  | 2.7%   | 7.6%    | 15.8%     |
|                   | Asian & Pacific Islander              | 4.8%  | 5.6%   | 7.3%    | 7.4%      |
|                   | Other Races                           | 2.8%  | 3.8%   | 11.4%   | 13.2%     |
|                   | Hispanic or Latino Population         | 14.0% | 11.0%  | 23.0%   | 27.2%     |
|                   | Non Hispanic or Latino Population     | 86.0% | 89.0%  | 77.0%   | 72.8%     |

This report was produced using data from private and government sources deemed to be reliable and is herein provided without representation or warranty.