

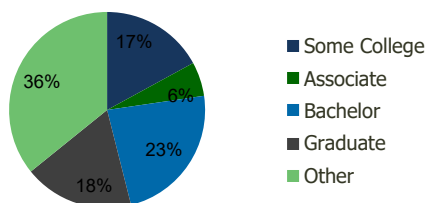
115770-Union Crescent Plaza Union, NJ	1.00 Mile Radius	3.00 Mile Radius	5.00 Mile Radius	10.00 Mile Radius
--	---------------------	---------------------	---------------------	----------------------

## Demographics (2019)

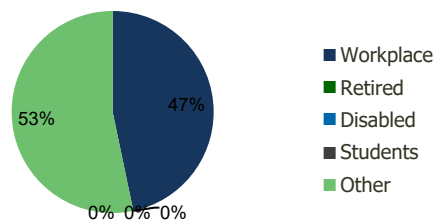
Current Population	20,758	171,269	530,854	1,656,352
Total Daytime Pop	20,550	192,916	558,407	1,843,155
Workplace Pop	8,460	90,116	237,713	821,334
Average Household Income	\$131,474	\$125,290	\$105,644	\$107,012
Median Household Income	\$87,270	\$81,828	\$66,200	\$70,585
Total Housing Units	7,220	61,445	191,416	592,575
Median Home Value	\$450,230	\$453,716	\$428,481	\$458,046
Bachelors Degree	24.9%	23.4%	20.0%	20.9%
Graduate Degree	19.2%	18.1%	13.7%	13.7%

## Projections (2023)

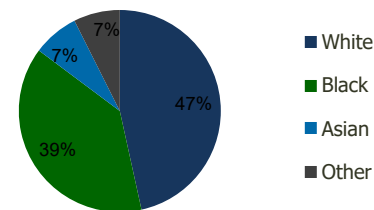
Projected Population	21,038	173,890	538,077	1,691,719
Projected 5 Year Pop Growth	0.3%	0.3%	0.3%	0.4%
Projected Households	7,318	62,452	194,138	605,894
Projected 5 Year Household Growth	0.3%	0.3%	0.3%	0.4%



Education (3-Mile)



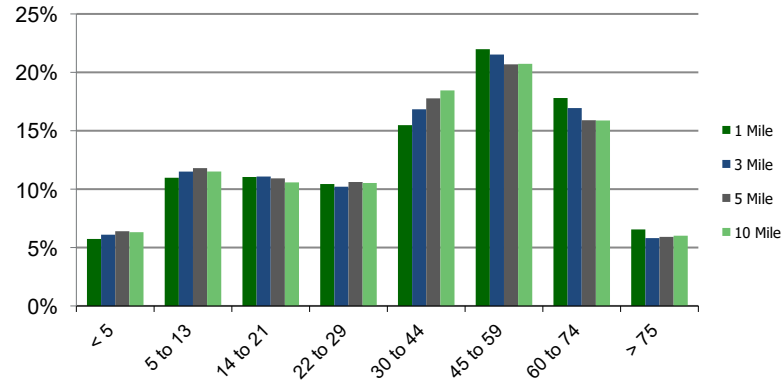
Daytime Population (3-Mile)



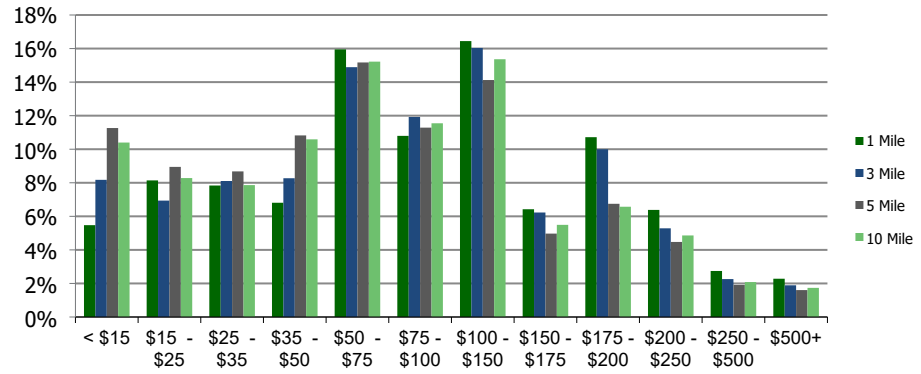
Ethnicity (3-Mile)

This report was produced using data from private and government sources deemed to be reliable and is herein provided without representation or warranty.

**Population by Age Range**



**Household Income by Income Range (\$000)**



<b>115770-Union Crescent Plaza</b> Union, NJ	<b>1.00 Mile Radius</b>	<b>3.00 Mile Radius</b>	<b>5.00 Mile Radius</b>	<b>10.00 Mile Radius</b>
---	-------------------------	-------------------------	-------------------------	--------------------------

<b>Population</b>	Current Estimated Population	20,758	171,269	530,854	1,656,352
	2010 Census Population	20,416	167,671	523,203	1,619,314
	2000 Census Population	19,704	166,099	530,484	1,597,780
	Historical Annual Growth 2000 to 2010	0.36%	0.09%	-0.14%	0.13%
	Estimated Annual Growth 2010 to 2012	0.17%	0.22%	0.15%	0.23%
	Projected Annual Growth 2012 to 2019	0.27%	0.30%	0.27%	0.42%
<b>Households</b>	Current Estimated Households	7,220	61,445	191,416	592,575
	2010 Census Households	7,097	59,987	188,420	578,192
	2000 Census Households	7,152	59,710	189,861	574,517
	Historical Annual Growth 2000 to 2010	-0.1%	0.0%	-0.1%	0.1%
	Estimated Annual Growth 2010 to 2012	0.2%	0.2%	0.2%	0.3%
	Projected Annual Growth 2012 to 2019	0.3%	0.3%	0.3%	0.4%
	Population per Household	2.9	2.8	2.7	2.7
<b>Ethnicity</b>	White	49.7%	46.6%	40.4%	52.4%
	Black or African American	34.6%	38.7%	45.9%	28.4%
	Asian & Pacific Islander	8.8%	7.4%	4.9%	6.6%
	Other Races	7.0%	7.4%	8.9%	12.6%
	Hispanic or Latino Population	10.7%	11.8%	16.4%	24.2%
	Non Hispanic or Latino Population	89.3%	88.2%	83.6%	75.8%

This report was produced using data from private and government sources deemed to be reliable and is herein provided without representation or warranty.