

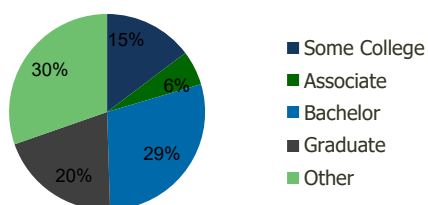
105580-Piscataway Town Center Piscataway, NJ	1.00 Mile Radius	3.00 Mile Radius	5.00 Mile Radius	10.00 Mile Radius
---	---------------------	---------------------	---------------------	----------------------

Demographics (2020)

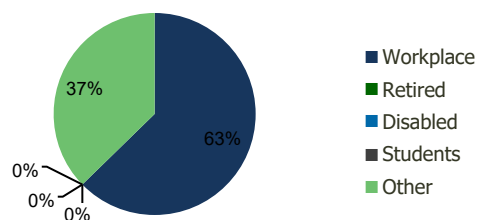
Current Population	4,577	93,593	339,882	962,102
Total Daytime Pop	18,846	142,515	471,940	1,235,805
Workplace Pop	16,682	89,352	232,000	634,753
Average Household Income	\$115,524	\$113,835	\$107,893	\$121,078
Median Household Income	\$95,967	\$98,508	\$84,378	\$91,075
Total Housing Units	1,559	29,625	111,175	332,474
Median Home Value	\$437,129	\$404,498	\$406,608	\$430,928
Bachelors Degree	31.2%	29.1%	24.0%	25.2%
Graduate Degree	22.4%	20.1%	18.0%	18.3%

Projections (2025)

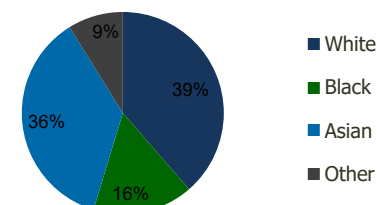
Projected Population	4,855	96,471	349,534	986,182
Projected 5 Year Pop Growth	1.2%	0.6%	0.6%	0.5%
Projected Households	1,655	30,615	114,543	341,070
Projected 5 Year Household Growth	1.2%	0.7%	0.6%	0.5%



Education (3-Mile)



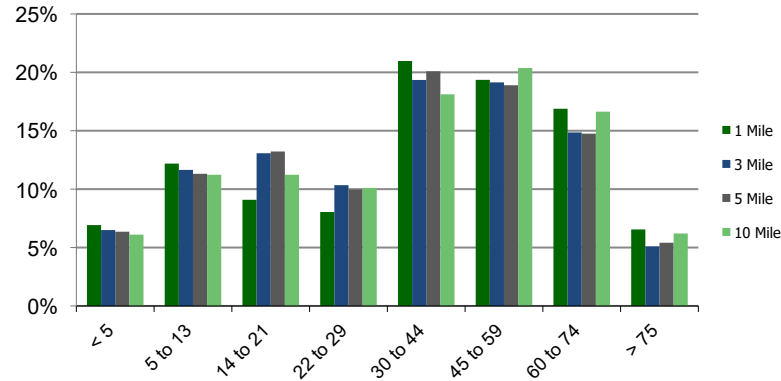
Daytime Population (3-Mile)



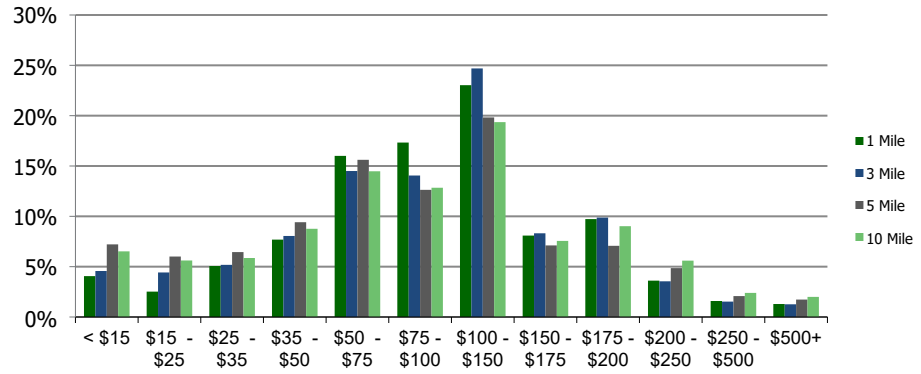
Ethnicity (3-Mile)

This report was produced using data from private and government sources deemed to be reliable and is herein provided without representation or warranty.

Population by Age Range



Household Income by Income Range (\$000)



105580-Piscataway Town Center Piscataway, NJ	1.00 Mile Radius	3.00 Mile Radius	5.00 Mile Radius	10.00 Mile Radius
--	-------------------------	-------------------------	-------------------------	--------------------------

Population	Current Estimated Population	4,577	93,593	339,882	962,102
	2010 Census Population	4,095	91,250	332,350	938,711
	2000 Census Population	3,946	83,603	311,532	890,471
	Historical Annual Growth 2000 to 2010	0.37%	0.88%	0.65%	0.53%
	Estimated Annual Growth 2010 to 2020	1.04%	0.24%	0.21%	0.23%
	Projected Annual Growth 2020 to 2025	1.19%	0.61%	0.56%	0.50%
Households	Current Estimated Households	1,559	29,625	111,175	332,474
	2010 Census Households	1,378	28,779	108,520	324,062
	2000 Census Households	1,343	27,829	104,884	313,729
	Historical Annual Growth 2000 to 2010	0.3%	0.3%	0.3%	0.3%
	Estimated Annual Growth 2010 to 2020	1.2%	0.3%	0.2%	0.2%
	Projected Annual Growth 2020 to 2025	1.2%	0.7%	0.6%	0.5%
	Population per Household	2.9	2.9	2.9	2.8
Ethnicity	White	33.7%	38.6%	49.1%	59.3%
	Black or African American	18.7%	16.1%	17.1%	13.0%
	Asian & Pacific Islander	40.2%	36.5%	20.4%	17.4%
	Other Races	7.5%	8.8%	13.4%	10.4%
	Hispanic or Latino Population	12.7%	13.0%	24.1%	21.7%
	Non Hispanic or Latino Population	87.3%	87.0%	75.9%	78.3%

This report was produced using data from private and government sources deemed to be reliable and is herein provided without representation or warranty.