

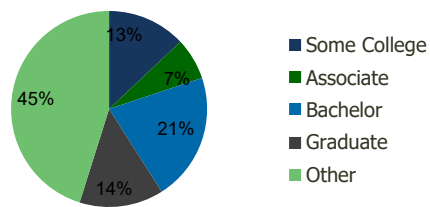
111300-Kings Highway S.C. Brooklyn, NY	1.00 Mile Radius	3.00 Mile Radius	5.00 Mile Radius	10.00 Mile Radius
---	---------------------	---------------------	---------------------	----------------------

## Demographics (2021)

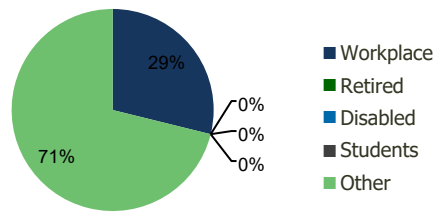
Current Population	135,649	973,905	1,806,357	4,619,673
Total Daytime Pop	116,524	824,544	1,475,881	4,993,827
Workplace Pop	38,929	237,894	444,103	2,203,980
Average Household Income	\$100,530	\$92,561	\$96,994	\$117,927
Median Household Income	\$70,068	\$66,576	\$67,760	\$78,888
Total Housing Units	49,454	345,234	657,775	1,786,515
Median Home Value	\$755,554	\$651,202	\$649,067	\$659,964
Bachelors Degree	23.3%	21.1%	21.0%	23.9%
Graduate Degree	16.8%	13.9%	14.5%	16.2%

## Projections (2026)

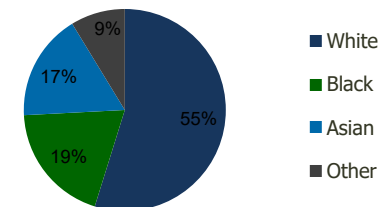
Projected Population	132,267	947,876	1,771,127	4,670,630
Projected 5 Year Pop Growth	-0.5%	-0.5%	-0.4%	0.2%
Projected Households	48,233	336,015	645,775	1,812,769
Projected 5 Year Household Growth	-0.5%	-0.5%	-0.4%	0.3%



Education (3-Mile)



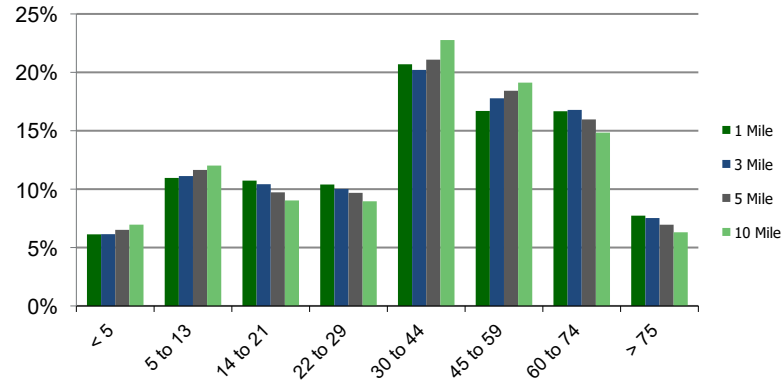
Daytime Population (3-Mile)



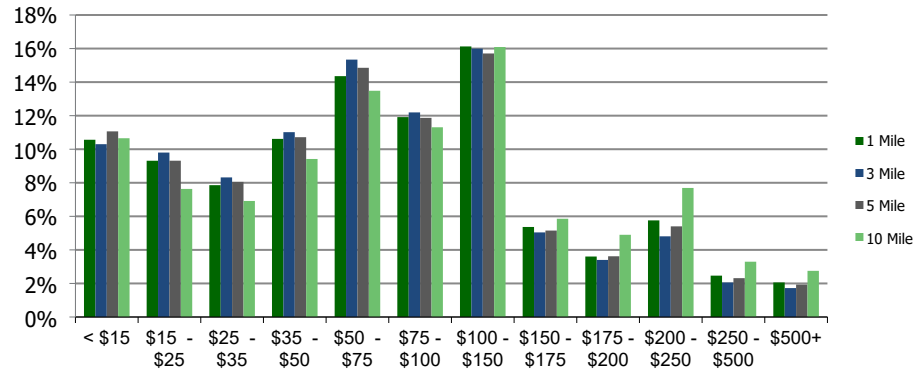
Ethnicity (3-Mile)

This report was produced using data from private and government sources deemed to be reliable and is herein provided without representation or warranty.

**Population by Age Range**



**Household Income by Income Range (\$000)**



<b>111300-Kings Highway S.C. Brooklyn, NY</b>	<b>1.00 Mile Radius</b>	<b>3.00 Mile Radius</b>	<b>5.00 Mile Radius</b>	<b>10.00 Mile Radius</b>
---	-----------------------------	-----------------------------	-----------------------------	------------------------------

<b>Population</b>	Current Estimated Population	135,649	973,905	1,806,357	4,619,673
	2010 Census Population	130,580	948,095	1,724,943	4,213,712
	2000 Census Population	132,389	943,076	1,728,154	4,096,630
	Historical Annual Growth 2000 to 2010	-0.14%	0.05%	-0.02%	0.28%
	Estimated Annual Growth 2010 to 2020	0.32%	0.23%	0.39%	0.79%
	Projected Annual Growth 2020 to 2025	-0.50%	-0.54%	-0.39%	0.22%
<b>Households</b>	Current Estimated Households	49,454	345,234	657,775	1,786,515
	2010 Census Households	47,663	336,202	626,461	1,616,752
	2000 Census Households	47,829	335,784	621,480	1,547,411
	Historical Annual Growth 2000 to 2010	0.0%	0.0%	0.1%	0.4%
	Estimated Annual Growth 2010 to 2020	0.3%	0.2%	0.4%	0.9%
	Projected Annual Growth 2020 to 2025	-0.5%	-0.5%	-0.4%	0.3%
	Population per Household	2.7	2.8	2.7	2.5
<b>Ethnicity</b>	White	76.5%	54.8%	44.3%	48.1%
	Black or African American	2.2%	19.4%	31.9%	24.5%
	Asian & Pacific Islander	14.4%	17.1%	13.9%	14.2%
	Other Races	6.9%	8.7%	9.8%	13.2%
	Hispanic or Latino Population	9.1%	12.1%	14.7%	21.2%
	Non Hispanic or Latino Population	90.9%	87.9%	85.3%	78.8%

This report was produced using data from private and government sources deemed to be reliable and is herein provided without representation or warranty.