

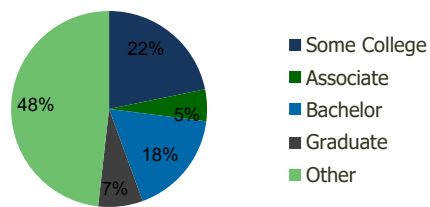
115550-Conroe Marketplace Conroe, TX	1.00 Mile Radius	3.00 Mile Radius	5.00 Mile Radius	10.00 Mile Radius
---	---------------------	---------------------	---------------------	----------------------

### Demographics (2021)

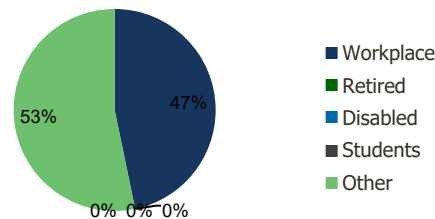
Current Population	5,292	42,216	83,052	242,182
Total Daytime Pop	7,471	49,892	87,143	185,592
Workplace Pop	3,848	23,321	36,124	61,900
Average Household Income	\$90,610	\$86,709	\$85,271	\$105,151
Median Household Income	\$57,725	\$60,698	\$61,092	\$76,965
Total Housing Units	2,037	15,538	29,840	88,245
Median Home Value	\$231,834	\$234,670	\$222,305	\$276,944
Bachelors Degree	17.4%	17.4%	15.3%	20.0%
Graduate Degree	7.0%	7.4%	8.0%	10.3%

### Projections (2026)

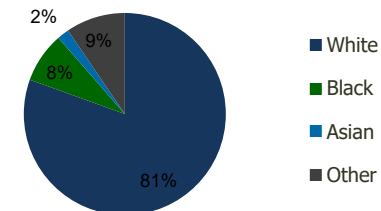
Projected Population	5,806	46,159	90,338	268,519
Projected 5 Year Pop Growth	1.9%	1.8%	1.7%	2.1%
Projected Households	2,238	17,167	32,820	98,192
Projected 5 Year Household Growth	1.9%	2.0%	1.9%	2.2%



Education (3-Mile)



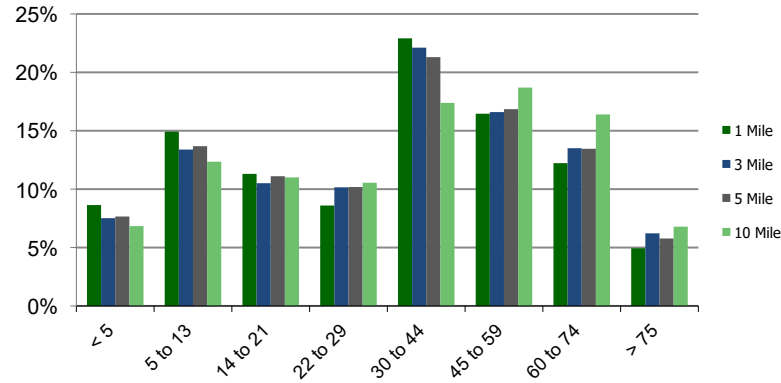
Daytime Population (3-Mile)



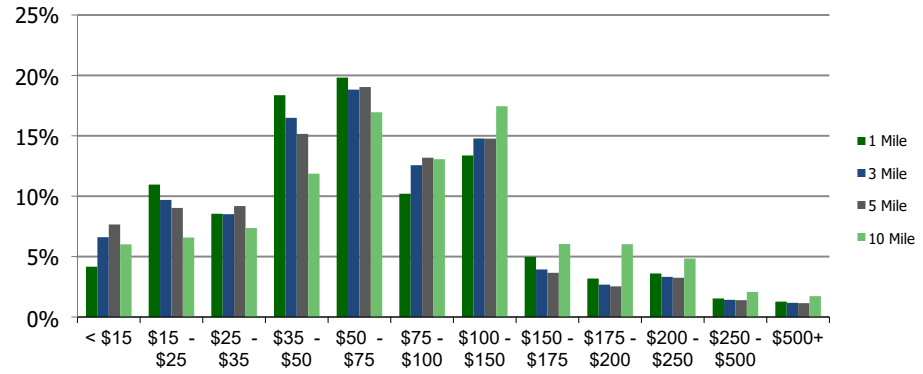
Ethnicity (3-Mile)

This report was produced using data from private and government sources deemed to be reliable and is herein provided without representation or warranty.

### Population by Age Range



### Household Income by Income Range (\$000)



### 115550-Conroe Marketplace

Conroe, TX

1.00 Mile Radius

3.00 Mile Radius

5.00 Mile Radius

10.00 Mile Radius

	1.00 Mile Radius	3.00 Mile Radius	5.00 Mile Radius	10.00 Mile Radius
<b>Population</b>				
Current Estimated Population	5,292	42,216	83,052	242,182
2010 Census Population	3,619	30,019	59,254	165,005
2000 Census Population	2,236	21,871	45,854	108,061
Historical Annual Growth 2000 to 2010	4.94%	3.22%	2.60%	4.32%
Estimated Annual Growth 2010 to 2020	3.29%	2.94%	2.92%	3.32%
Projected Annual Growth 2020 to 2025	1.87%	1.80%	1.70%	2.09%
<b>Households</b>				
Current Estimated Households	2,037	15,538	29,840	88,245
2010 Census Households	1,391	10,699	20,624	59,619
2000 Census Households	937	8,308	16,449	38,748
Historical Annual Growth 2000 to 2010	4.0%	2.6%	2.3%	4.4%
Estimated Annual Growth 2010 to 2020	3.3%	3.2%	3.2%	3.4%
Projected Annual Growth 2020 to 2025	1.9%	2.0%	1.9%	2.2%
Population per Household	2.6	2.6	2.7	2.7
<b>Ethnicity</b>				
White	78.8%	80.5%	78.7%	84.8%
Black or African American	9.8%	8.1%	8.5%	5.0%
Asian & Pacific Islander	2.4%	1.9%	1.7%	2.4%
Other Races	9.0%	9.5%	11.1%	7.8%
Hispanic or Latino Population	29.2%	33.4%	36.2%	23.5%
Non Hispanic or Latino Population	70.8%	66.6%	63.8%	76.5%

This report was produced using data from private and government sources deemed to be reliable and is herein provided without representation or warranty.