

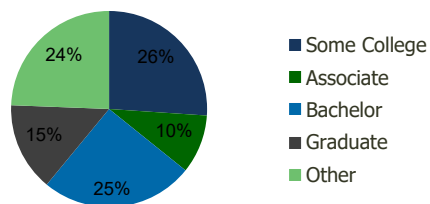
0879-Westgate Plaza Amarillo, TX	1.00 Mile Radius	3.00 Mile Radius	5.00 Mile Radius	10.00 Mile Radius
-------------------------------------	---------------------	---------------------	---------------------	----------------------

Demographics (2018)

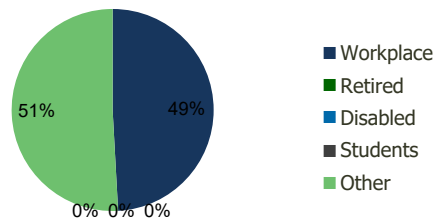
Current Population	4,469	42,361	115,007	218,205
Total Daytime Pop	5,242	43,644	113,961	226,318
Workplace Pop	2,725	21,443	51,481	92,108
Average Household Income	\$96,002	\$93,478	\$82,765	\$73,831
Median Household Income	\$73,836	\$65,987	\$60,918	\$54,300
Total Housing Units	1,981	18,525	48,580	84,521
Median Home Value	\$173,115	\$180,943	\$158,942	\$132,363
Bachelors Degree	26.8%	25.2%	20.6%	15.9%
Graduate Degree	13.9%	14.6%	11.0%	7.7%

Projections (2023)

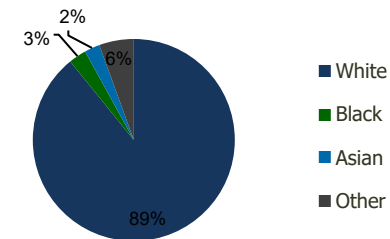
Projected Population	4,667	45,483	121,509	230,390
Projected 5 Year Pop Growth	0.9%	1.4%	1.1%	1.1%
Projected Households	2,074	19,888	51,239	89,137
Projected 5 Year Household Growth	0.9%	1.4%	1.1%	1.1%



Education (3-Mile)



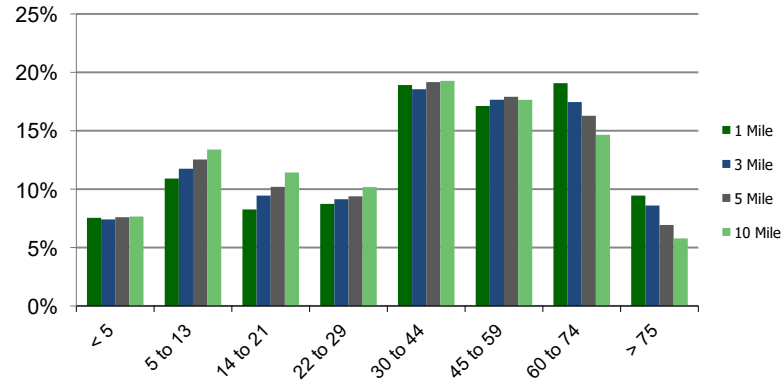
Daytime Population (3-Mile)



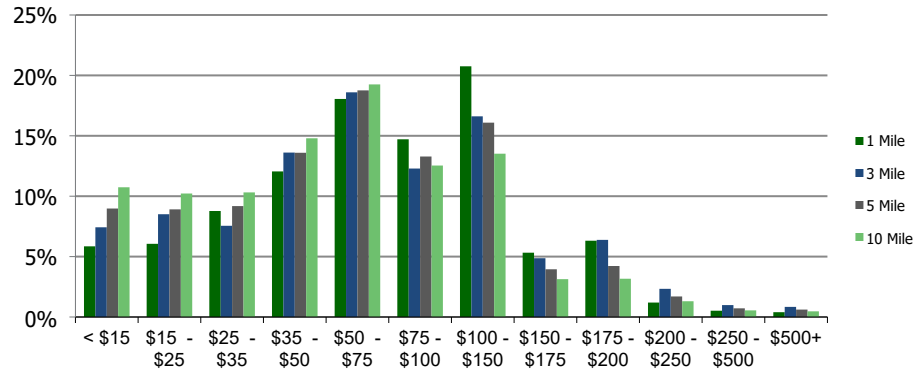
Ethnicity (3-Mile)

This report was produced using data from private and government sources deemed to be reliable and is herein provided without representation or warranty.

Population by Age Range



Household Income by Income Range (\$000)



0879-Westgate Plaza Amarillo, TX

1.00 Mile
Radius

3.00 Mile
Radius

5.00 Mile
Radius

10.00 Mile
Radius

	1.00 Mile Radius	3.00 Mile Radius	5.00 Mile Radius	10.00 Mile Radius
Population				
Current Estimated Population	4,469	42,361	115,007	218,205
2010 Census Population	4,180	38,066	105,477	202,673
2000 Census Population	4,097	35,308	97,515	181,941
Historical Annual Growth 2000 to 2010	0.20%	0.76%	0.79%	1.08%
Estimated Annual Growth 2010 to 2012	0.77%	1.23%	0.99%	0.85%
Projected Annual Growth 2012 to 2018	0.87%	1.43%	1.11%	1.09%
Households				
Current Estimated Households	1,981	18,525	48,580	84,521
2010 Census Households	1,861	16,726	44,669	78,617
2000 Census Households	1,693	15,062	40,993	70,923
Historical Annual Growth 2000 to 2010	0.9%	1.1%	0.9%	1.0%
Estimated Annual Growth 2010 to 2012	0.7%	1.2%	1.0%	0.8%
Projected Annual Growth 2012 to 2018	0.9%	1.4%	1.1%	1.1%
Population per Household	2.2	2.3	2.3	2.6
Ethnicity				
White	87.8%	89.2%	86.8%	81.6%
Black or African American	3.5%	2.8%	3.9%	5.9%
Asian & Pacific Islander	4.0%	2.5%	2.4%	2.4%
Other Races	4.7%	5.5%	6.9%	10.1%
Hispanic or Latino Population	13.7%	13.7%	16.7%	27.4%
Non Hispanic or Latino Population	86.3%	86.3%	83.3%	72.6%

This report was produced using data from private and government sources deemed to be reliable and is herein provided without representation or warranty.