

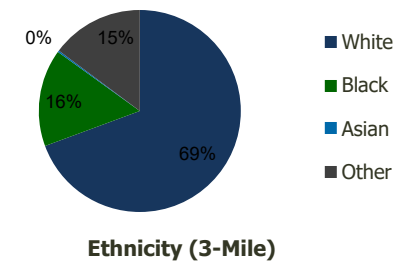
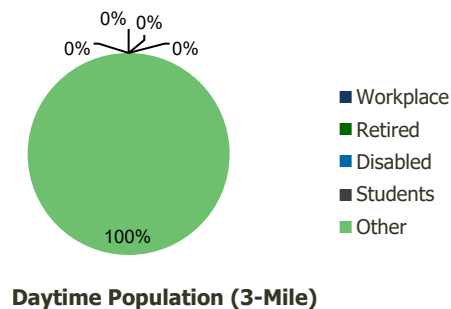
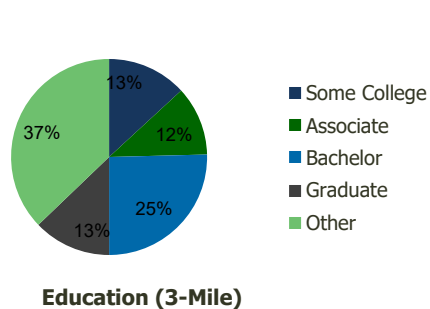
113700-Trujillo Alto Plaza Trujillo Alto, PR	1.00 Mile Radius	3.00 Mile Radius	5.00 Mile Radius	10.00 Mile Radius
---	---------------------	---------------------	---------------------	----------------------

Demographics (2020)

Current Population	23,871	184,076	409,872	893,599
Total Daytime Pop	0	0	0	0
Workplace Pop	0	0	0	0
Average Household Income	\$41,050	\$43,702	\$43,455	\$44,998
Median Household Income	\$31,550	\$29,454	\$27,305	\$27,853
Total Housing Units	9,154	70,555	160,347	346,603
Median Home Value	\$150,828	\$144,582	\$141,564	\$138,291
Bachelors Degree	24.6%	25.4%	23.5%	22.3%
Graduate Degree	11.3%	12.8%	12.6%	11.7%

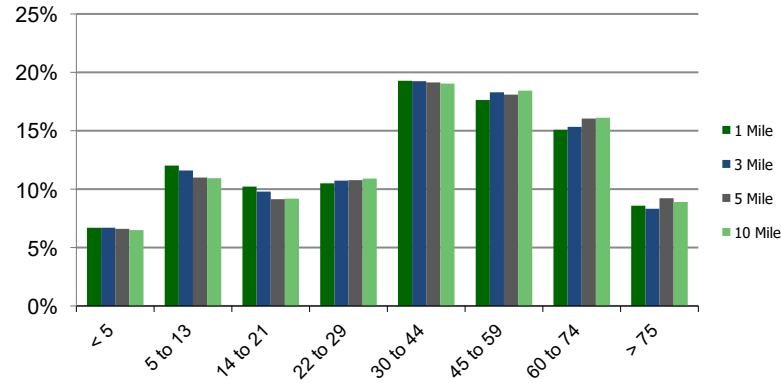
Projections (2025)

Projected Population	22,675	171,036	378,315	840,815
Projected 5 Year Pop Growth	-1.0%	-1.5%	-1.6%	-1.2%
Projected Households	8,691	65,431	147,674	324,963
Projected 5 Year Household Growth	-1.0%	-1.5%	-1.6%	-1.3%

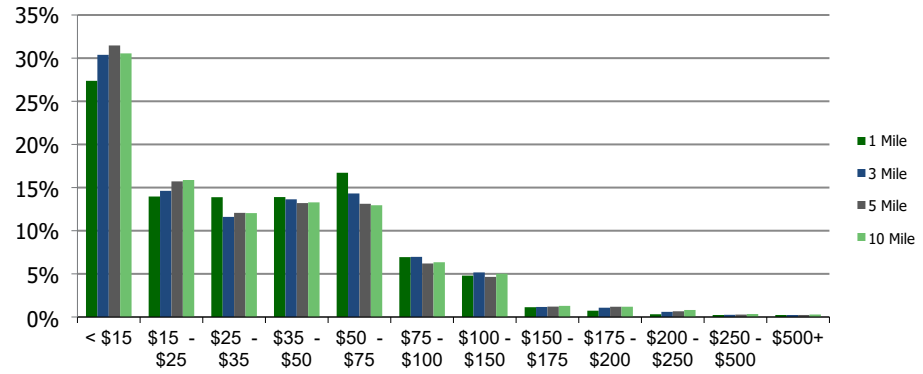


This report was produced using data from private and government sources deemed to be reliable and is herein provided without representation or warranty.

Population by Age Range



Household Income by Income Range (\$000)



113700-Trujillo Alto Plaza
Trujillo Alto, PR

1.00 Mile
Radius

3.00 Mile
Radius

5.00 Mile
Radius

10.00 Mile
Radius

	1.00 Mile Radius	3.00 Mile Radius	5.00 Mile Radius	10.00 Mile Radius
Population				
Current Estimated Population	23,871	184,076	409,872	893,599
2010 Census Population	27,313	213,256	481,507	1,037,132
2000 Census Population	29,934	217,986	511,597	1,083,613
Historical Annual Growth 2000 to 2010	-0.91%	-0.22%	-0.60%	-0.44%
Estimated Annual Growth 2010 to 2020	-1.25%	-1.36%	-1.49%	-1.38%
Projected Annual Growth 2020 to 2025	-1.02%	-1.46%	-1.59%	-1.21%
Households				
Current Estimated Households	9,154	70,555	160,347	346,603
2010 Census Households	10,475	81,838	188,605	403,449
2000 Census Households	9,867	74,133	178,922	380,875
Historical Annual Growth 2000 to 2010	0.6%	1.0%	0.5%	0.6%
Estimated Annual Growth 2010 to 2020	-1.2%	-1.4%	-1.5%	-1.4%
Projected Annual Growth 2020 to 2025	-1.0%	-1.5%	-1.6%	-1.3%
Population per Household	2.6	2.6	2.5	2.5
Ethnicity				
White	72.8%	69.4%	67.3%	67.4%
Black or African American	13.2%	15.6%	16.9%	15.5%
Asian & Pacific Islander	0.1%	0.3%	0.3%	0.3%
Other Races	13.8%	14.8%	15.5%	16.8%
Hispanic or Latino Population	99.2%	98.8%	98.7%	98.5%
Non Hispanic or Latino Population	0.8%	1.2%	1.3%	1.5%

This report was produced using data from private and government sources deemed to be reliable and is herein provided without representation or warranty.