

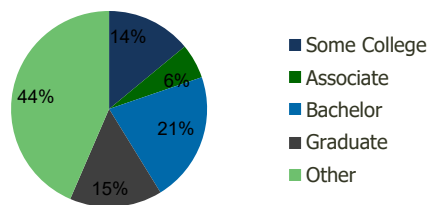
106170-North Brunswick Plaza North Brunswick, NJ	1.00 Mile Radius	3.00 Mile Radius	5.00 Mile Radius	10.00 Mile Radius
---	---------------------	---------------------	---------------------	----------------------

Demographics (2021)

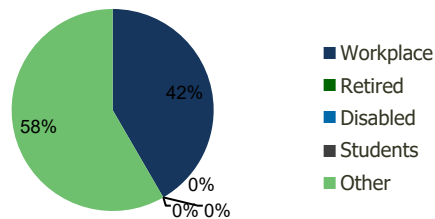
Current Population	12,625	128,317	258,145	748,660
Total Daytime Pop	23,954	194,881	342,736	936,110
Workplace Pop	13,073	81,140	145,486	462,087
Average Household Income	\$100,905	\$101,871	\$110,199	\$119,163
Median Household Income	\$76,006	\$76,013	\$85,480	\$94,517
Total Housing Units	4,597	39,311	85,499	262,131
Median Home Value	\$426,941	\$465,425	\$472,679	\$484,087
Bachelors Degree	25.3%	21.5%	26.1%	26.9%
Graduate Degree	13.9%	15.3%	19.1%	18.6%

Projections (2026)

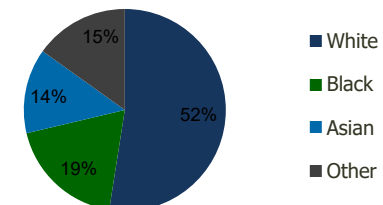
Projected Population	12,657	132,219	263,895	766,222
Projected 5 Year Pop Growth	0.1%	0.6%	0.4%	0.5%
Projected Households	4,610	40,547	87,477	268,566
Projected 5 Year Household Growth	0.1%	0.6%	0.5%	0.5%



Education (3-Mile)



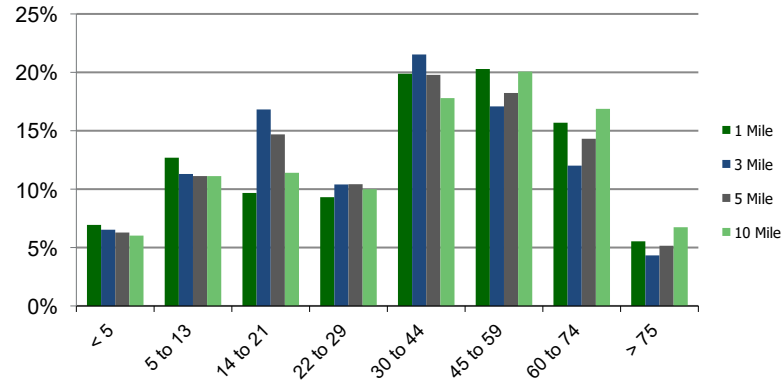
Daytime Population (3-Mile)



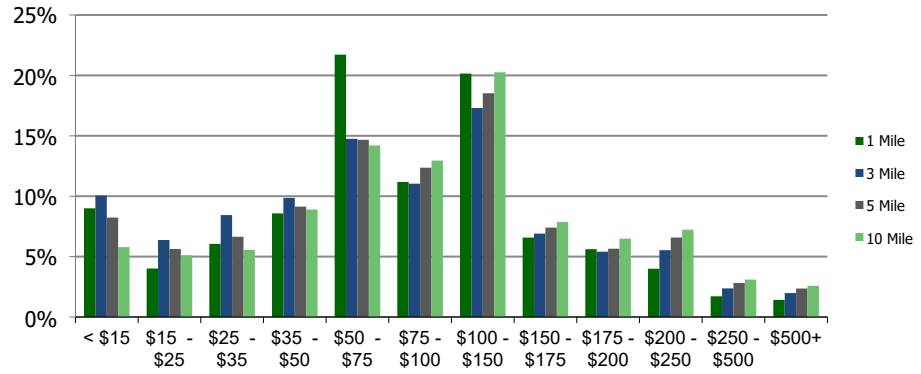
Ethnicity (3-Mile)

This report was produced using data from private and government sources deemed to be reliable and is herein provided without representation or warranty.

Population by Age Range



Household Income by Income Range (\$000)



	1.00 Mile Radius	3.00 Mile Radius	5.00 Mile Radius	10.00 Mile Radius
--	------------------	------------------	------------------	-------------------

	1.00 Mile Radius	3.00 Mile Radius	5.00 Mile Radius	10.00 Mile Radius
Population				
Current Estimated Population	12,625	128,317	258,145	748,660
2010 Census Population	12,967	118,684	244,522	703,923
2000 Census Population	12,592	107,548	224,677	648,643
Historical Annual Growth 2000 to 2010	0.29%	0.99%	0.85%	0.82%
Estimated Annual Growth 2010 to 2020	-0.23%	0.67%	0.46%	0.53%
Projected Annual Growth 2020 to 2025	0.05%	0.60%	0.44%	0.46%
Households				
Current Estimated Households	4,597	39,311	85,499	262,131
2010 Census Households	4,687	36,080	80,649	245,633
2000 Census Households	4,983	34,403	77,594	231,157
Historical Annual Growth 2000 to 2010	-0.6%	0.5%	0.4%	0.6%
Estimated Annual Growth 2010 to 2020	-0.2%	0.7%	0.5%	0.6%
Projected Annual Growth 2020 to 2025	0.1%	0.6%	0.5%	0.5%
Population per Household	2.7	3.1	2.8	2.8
Ethnicity				
White	51.1%	52.5%	54.6%	58.2%
Black or African American	18.7%	18.8%	16.3%	11.9%
Asian & Pacific Islander	14.9%	13.6%	18.3%	21.4%
Other Races	15.3%	15.1%	10.8%	8.5%
Hispanic or Latino Population	28.4%	32.6%	22.0%	16.5%
Non Hispanic or Latino Population	71.6%	67.4%	78.0%	83.5%

This report was produced using data from private and government sources deemed to be reliable and is herein provided without representation or warranty.