

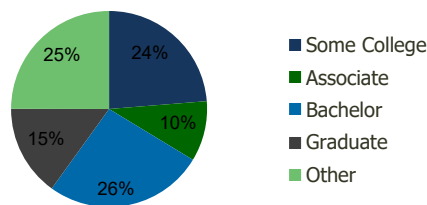
114730-Plaza 580 S.C. Livermore, CA	1.00 Mile Radius	3.00 Mile Radius	5.00 Mile Radius	10.00 Mile Radius
----------------------------------------	---------------------	---------------------	---------------------	----------------------

Demographics (2020)

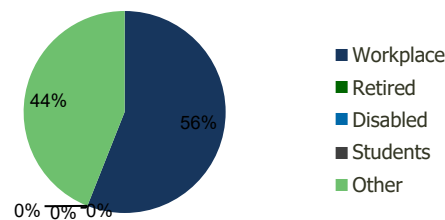
Current Population	9,309	66,612	92,753	245,102
Total Daytime Pop	7,948	72,443	114,270	275,922
Workplace Pop	4,678	40,576	52,986	127,524
Average Household Income	\$135,684	\$142,879	\$153,968	\$177,409
Median Household Income	\$115,452	\$118,625	\$127,401	\$147,748
Total Housing Units	3,501	24,250	33,124	85,480
Median Home Value	\$893,341	\$916,926	\$962,915	\$1,234,965
Bachelors Degree	25.4%	26.3%	28.1%	32.9%
Graduate Degree	15.7%	15.1%	16.8%	24.8%

Projections (2025)

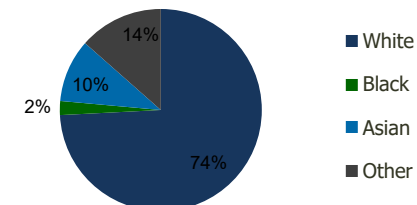
Projected Population	9,314	67,279	93,978	261,701
Projected 5 Year Pop Growth	0.0%	0.2%	0.3%	1.3%
Projected Households	3,503	24,494	33,542	91,545
Projected 5 Year Household Growth	0.0%	0.2%	0.3%	1.4%



Education (3-Mile)



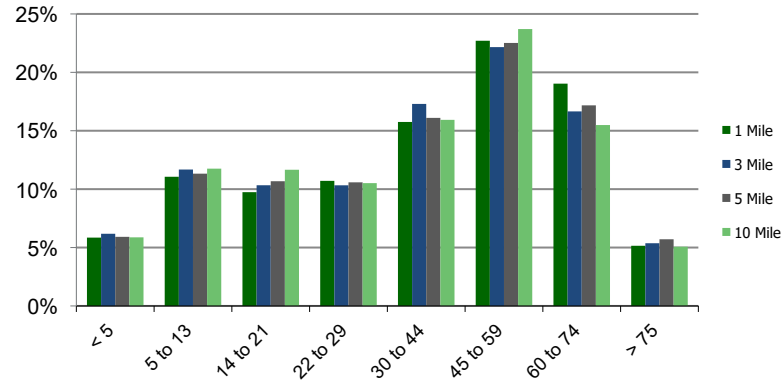
Daytime Population (3-Mile)



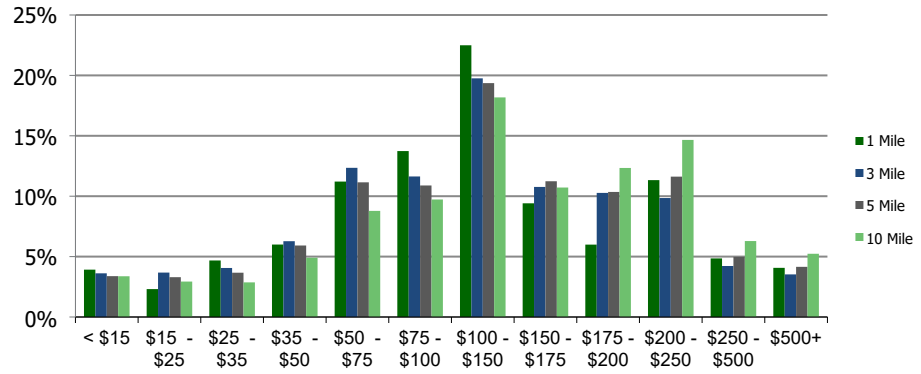
Ethnicity (3-Mile)

This report was produced using data from private and government sources deemed to be reliable and is herein provided without representation or warranty.

Population by Age Range



Household Income by Income Range (\$000)



114730-Plaza 580 S.C. Livermore, CA	1.00 Mile Radius	3.00 Mile Radius	5.00 Mile Radius	10.00 Mile Radius
----------------------------------------	---------------------	---------------------	---------------------	----------------------

Population	Current Estimated Population	9,309	66,612	92,753	245,102
	2010 Census Population	8,794	60,642	84,124	200,970
	2000 Census Population	8,963	56,300	74,633	156,194
	Historical Annual Growth 2000 to 2010	-0.19%	0.75%	1.20%	2.55%
	Estimated Annual Growth 2010 to 2020	0.53%	0.88%	0.91%	1.86%
	Projected Annual Growth 2020 to 2025	0.01%	0.20%	0.26%	1.32%
Households	Current Estimated Households	3,501	24,250	33,124	85,480
	2010 Census Households	3,304	22,055	30,033	69,376
	2000 Census Households	3,374	20,206	26,599	54,975
	Historical Annual Growth 2000 to 2010	-0.2%	0.9%	1.2%	2.4%
	Estimated Annual Growth 2010 to 2020	0.5%	0.9%	0.9%	2.0%
	Projected Annual Growth 2020 to 2025	0.0%	0.2%	0.3%	1.4%
	Population per Household	2.7	2.7	2.8	2.8
Ethnicity	White	74.8%	74.2%	73.9%	58.9%
	Black or African American	2.3%	2.2%	2.0%	3.6%
	Asian & Pacific Islander	11.5%	10.1%	11.6%	27.1%
	Other Races	11.4%	13.5%	12.5%	10.4%
	Hispanic or Latino Population	17.6%	22.3%	20.0%	14.2%
	Non Hispanic or Latino Population	82.4%	77.7%	80.0%	85.8%

This report was produced using data from private and government sources deemed to be reliable and is herein provided without representation or warranty.