

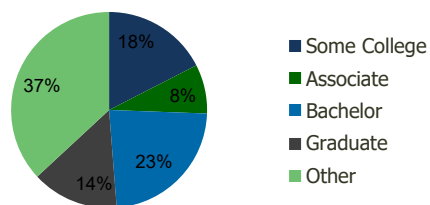
1007-Holmdel Towne Center Holmdel, NJ	1.00 Mile Radius	3.00 Mile Radius	5.00 Mile Radius	10.00 Mile Radius
--	---------------------	---------------------	---------------------	----------------------

Demographics (2018)

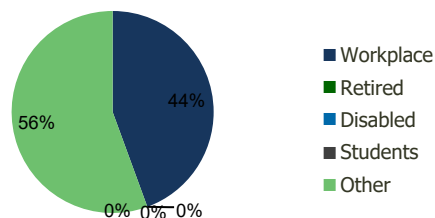
Current Population	8,644	72,848	131,297	496,544
Total Daytime Pop	11,514	70,271	123,545	471,183
Workplace Pop	6,937	31,209	51,162	180,875
Average Household Income	\$131,259	\$116,400	\$122,014	\$121,851
Median Household Income	\$107,961	\$91,674	\$95,177	\$92,394
Total Housing Units	3,185	25,780	47,352	178,588
Median Home Value	\$435,314	\$386,861	\$399,648	\$483,764
Bachelors Degree	30.6%	23.2%	24.8%	24.4%
Graduate Degree	21.1%	14.3%	15.9%	15.8%

Projections (2023)

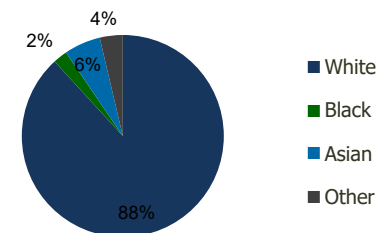
Projected Population	8,740	73,384	132,654	505,959
Projected 5 Year Pop Growth	0.2%	0.1%	0.2%	0.4%
Projected Households	3,222	25,975	47,854	181,821
Projected 5 Year Household Growth	0.2%	0.2%	0.2%	0.4%



Education (3-Mile)



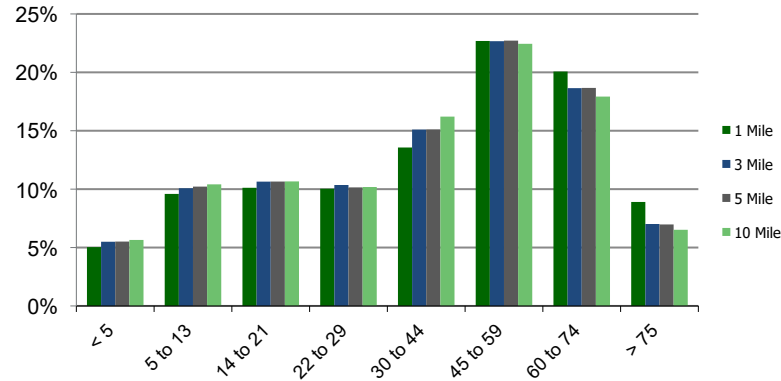
Daytime Population (3-Mile)



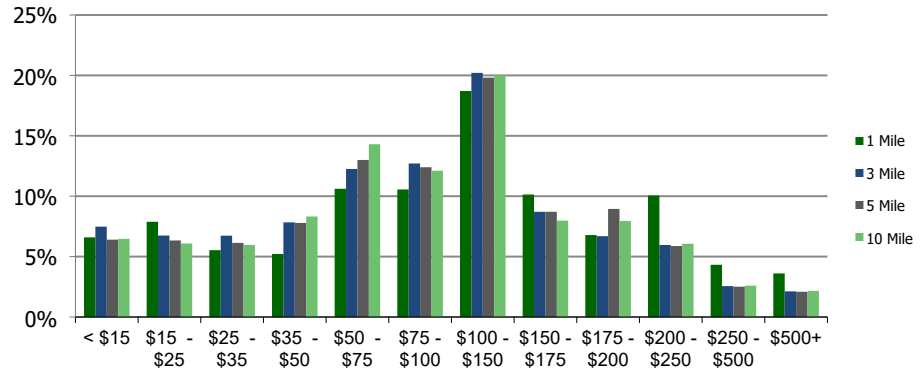
Ethnicity (3-Mile)

This report was produced using data from private and government sources deemed to be reliable and is herein provided without representation or warranty.

Population by Age Range



Household Income by Income Range (\$000)



1007-Holmdel Towne Center Holmdel, NJ	1.00 Mile Radius	3.00 Mile Radius	5.00 Mile Radius	10.00 Mile Radius
---	-------------------------	-------------------------	-------------------------	--------------------------

Population	Current Estimated Population	8,644	72,848	131,297	496,544
	2010 Census Population	8,618	76,412	135,517	495,976
	2000 Census Population	8,466	77,716	135,925	480,223
	Historical Annual Growth 2000 to 2010	0.18%	-0.17%	-0.03%	0.32%
	Estimated Annual Growth 2010 to 2012	0.03%	-0.54%	-0.36%	0.01%
	Projected Annual Growth 2012 to 2018	0.22%	0.15%	0.21%	0.38%
Households	Current Estimated Households	3,185	25,780	47,352	178,588
	2010 Census Households	3,175	27,123	48,945	178,563
	2000 Census Households	2,961	26,632	47,659	169,437
	Historical Annual Growth 2000 to 2010	0.7%	0.2%	0.3%	0.5%
	Estimated Annual Growth 2010 to 2012	0.0%	-0.6%	-0.4%	0.0%
	Projected Annual Growth 2012 to 2018	0.2%	0.2%	0.2%	0.4%
	Population per Household	2.7	2.8	2.7	2.8
Ethnicity	White	81.4%	88.2%	87.2%	83.3%
	Black or African American	1.2%	2.3%	3.1%	4.2%
	Asian & Pacific Islander	14.5%	5.8%	5.8%	6.8%
	Other Races	2.9%	3.7%	3.9%	5.7%
	Hispanic or Latino Population	6.6%	8.2%	8.2%	13.6%
	Non Hispanic or Latino Population	93.4%	91.8%	91.8%	86.4%

This report was produced using data from private and government sources deemed to be reliable and is herein provided without representation or warranty.