

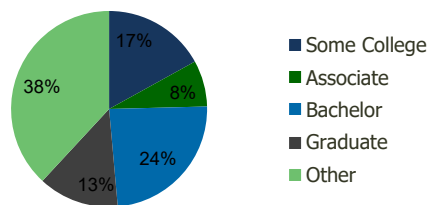
110070-Holmdel Towne Center Holmdel, NJ	1.00 Mile Radius	3.00 Mile Radius	5.00 Mile Radius	10.00 Mile Radius
--	---------------------	---------------------	---------------------	----------------------

Demographics (2020)

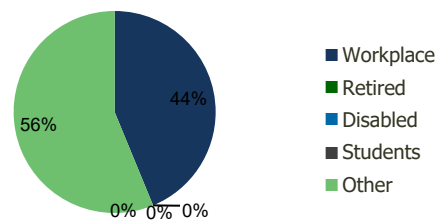
Current Population	8,515	73,433	131,864	501,229
Total Daytime Pop	11,459	71,293	125,497	485,324
Workplace Pop	6,879	31,212	51,380	184,083
Average Household Income	\$132,896	\$123,918	\$131,017	\$131,621
Median Household Income	\$107,962	\$96,261	\$102,869	\$99,259
Total Housing Units	3,135	25,996	47,553	180,148
Median Home Value	\$449,243	\$399,434	\$415,108	\$494,949
Bachelors Degree	27.6%	24.0%	26.3%	25.6%
Graduate Degree	20.6%	13.3%	15.2%	16.3%

Projections (2025)

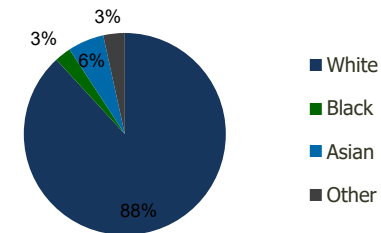
Projected Population	8,594	74,098	133,505	511,647
Projected 5 Year Pop Growth	0.2%	0.2%	0.2%	0.4%
Projected Households	3,165	26,234	48,150	183,742
Projected 5 Year Household Growth	0.2%	0.2%	0.3%	0.4%



Education (3-Mile)



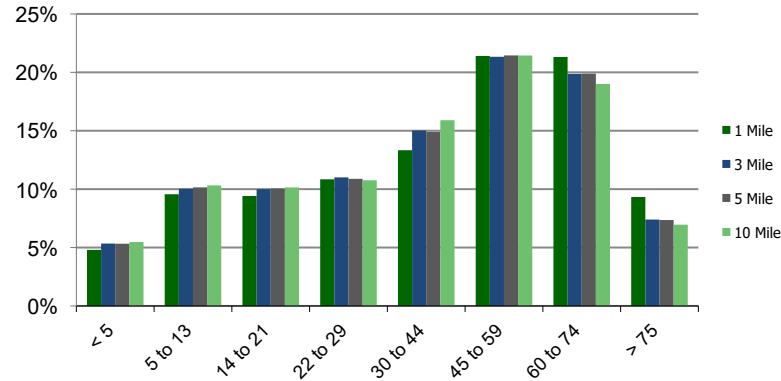
Daytime Population (3-Mile)



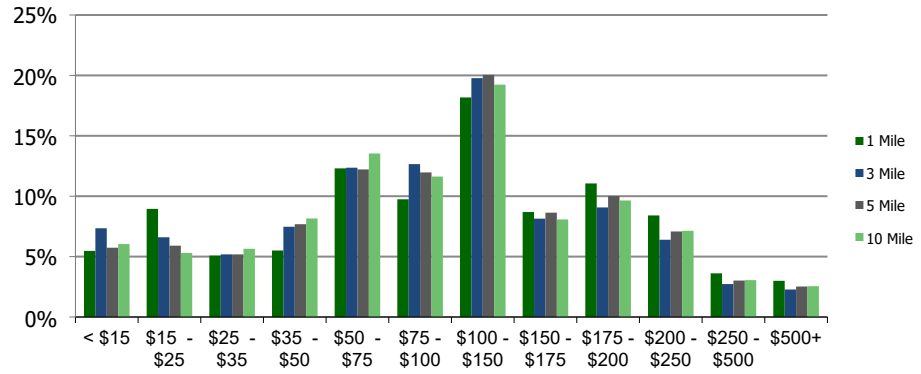
Ethnicity (3-Mile)

This report was produced using data from private and government sources deemed to be reliable and is herein provided without representation or warranty.

Population by Age Range



Household Income by Income Range (\$000)



110070-Holmdel Towne Center Holmdel, NJ	1.00 Mile Radius	3.00 Mile Radius	5.00 Mile Radius	10.00 Mile Radius
---	-------------------------	-------------------------	-------------------------	--------------------------

Population	Current Estimated Population	8,515	73,433	131,864	501,229
	2010 Census Population	8,618	76,412	135,300	499,049
	2000 Census Population	8,466	77,716	135,692	483,135
	Historical Annual Growth 2000 to 2010	0.18%	-0.17%	-0.03%	0.32%
	Estimated Annual Growth 2010 to 2020	-0.11%	-0.37%	-0.24%	0.04%
	Projected Annual Growth 2020 to 2025	0.18%	0.18%	0.25%	0.41%
Households	Current Estimated Households	3,135	25,996	47,553	180,148
	2010 Census Households	3,175	27,123	48,868	179,519
	2000 Census Households	2,961	26,632	47,588	170,343
	Historical Annual Growth 2000 to 2010	0.7%	0.2%	0.3%	0.5%
	Estimated Annual Growth 2010 to 2020	-0.1%	-0.4%	-0.3%	0.0%
	Projected Annual Growth 2020 to 2025	0.2%	0.2%	0.3%	0.4%
	Population per Household	2.7	2.8	2.7	2.8
Ethnicity	White	82.2%	88.1%	87.4%	83.5%
	Black or African American	1.1%	2.6%	3.2%	4.2%
	Asian & Pacific Islander	14.1%	5.8%	5.7%	6.8%
	Other Races	2.6%	3.4%	3.7%	5.6%
	Hispanic or Latino Population	7.5%	8.7%	8.5%	14.4%
	Non Hispanic or Latino Population	92.5%	91.3%	91.5%	85.6%

This report was produced using data from private and government sources deemed to be reliable and is herein provided without representation or warranty.