

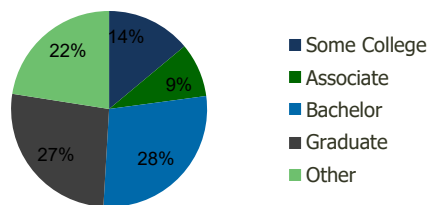
0634-South Miami S.C. Miami,FL	1.00 Mile Radius	3.00 Mile Radius	5.00 Mile Radius	10.00 Mile Radius
-----------------------------------	---------------------	---------------------	---------------------	----------------------

Demographics (2018)

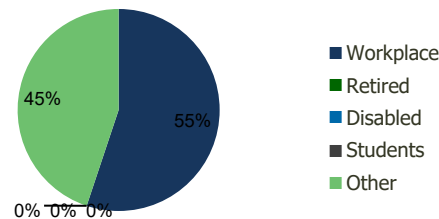
Current Population	16,419	101,681	318,184	1,363,055
Total Daytime Pop	32,870	137,175	381,970	1,675,869
Workplace Pop	24,642	75,620	183,705	753,816
Average Household Income	\$122,117	\$149,823	\$115,583	\$84,156
Median Household Income	\$68,843	\$88,430	\$70,334	\$54,690
Total Housing Units	6,672	38,422	117,155	486,681
Median Home Value	\$900,074	\$932,842	\$682,169	\$498,024
Bachelors Degree	26.6%	28.0%	23.2%	20.1%
Graduate Degree	23.3%	26.5%	19.0%	12.2%

Projections (2023)

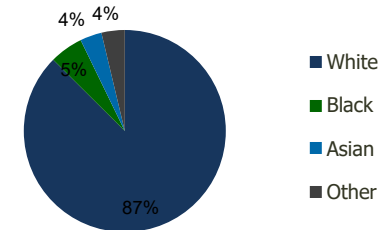
Projected Population	16,915	104,518	322,030	1,420,631
Projected 5 Year Pop Growth	0.6%	0.6%	0.2%	0.8%
Projected Households	6,891	39,620	118,769	511,331
Projected 5 Year Household Growth	0.6%	0.6%	0.3%	1.0%



Education (3-Mile)



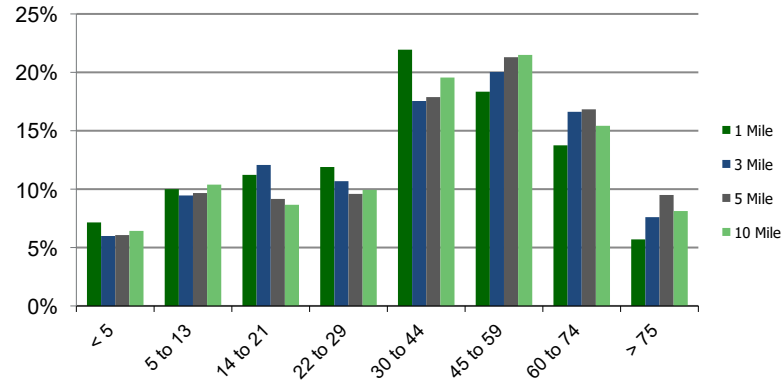
Daytime Population (3-Mile)



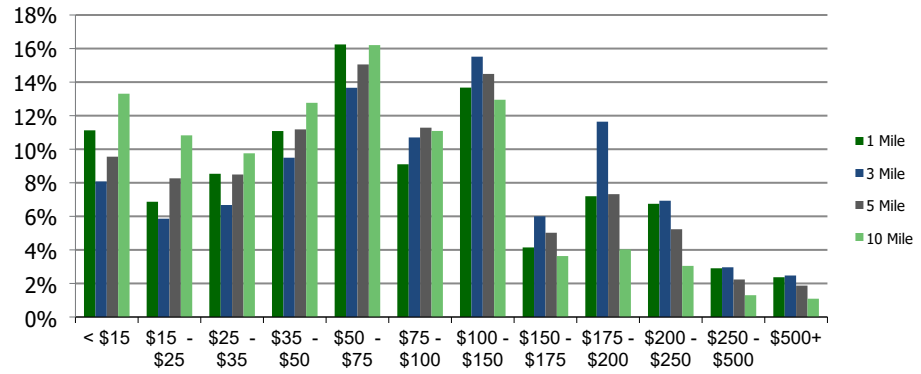
Ethnicity (3-Mile)

This report was produced using data from private and government sources deemed to be reliable and is herein provided without representation or warranty.

Population by Age Range



Household Income by Income Range (\$000)



0634-South Miami S.C.
Miami, FL

1.00 Mile
Radius

3.00 Mile
Radius

5.00 Mile
Radius

10.00 Mile
Radius

	1.00 Mile Radius	3.00 Mile Radius	5.00 Mile Radius	10.00 Mile Radius
Population	Current Estimated Population	16,419	101,681	318,184
	2010 Census Population	15,370	95,654	305,087
	2000 Census Population	14,109	92,143	295,552
	Historical Annual Growth 2000 to 2010	0.86%	0.37%	0.32%
	Estimated Annual Growth 2010 to 2012	0.76%	0.70%	0.48%
	Projected Annual Growth 2012 to 2018	0.60%	0.55%	0.24%
Households	Current Estimated Households	6,672	38,422	117,155
	2010 Census Households	6,199	35,970	111,955
	2000 Census Households	5,820	34,635	107,874
	Historical Annual Growth 2000 to 2010	0.6%	0.4%	0.4%
	Estimated Annual Growth 2010 to 2012	0.8%	0.8%	0.5%
	Projected Annual Growth 2012 to 2018	0.6%	0.6%	0.3%
	Population per Household	2.3	2.5	2.7
Ethnicity	White	77.1%	87.5%	90.2%
	Black or African American	13.9%	5.3%	4.0%
	Asian & Pacific Islander	4.9%	3.5%	2.2%
	Other Races	4.2%	3.7%	3.6%
	Hispanic or Latino Population	43.3%	56.1%	70.1%
	Non Hispanic or Latino Population	56.7%	43.9%	29.9%

This report was produced using data from private and government sources deemed to be reliable and is herein provided without representation or warranty.