

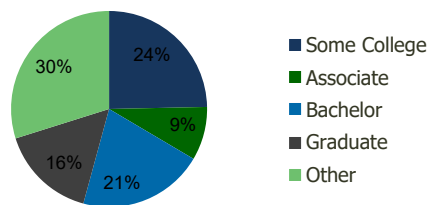
114180-La Verne Towne Center La Verne, CA	1.00 Mile Radius	3.00 Mile Radius	5.00 Mile Radius	10.00 Mile Radius
--	---------------------	---------------------	---------------------	----------------------

Demographics (2020)

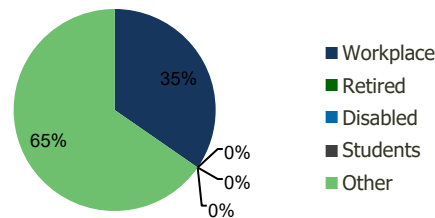
Current Population	21,259	112,198	298,327	1,064,407
Total Daytime Pop	23,550	140,667	373,350	1,188,126
Workplace Pop	7,818	48,727	126,233	422,765
Average Household Income	\$97,448	\$108,470	\$97,137	\$98,406
Median Household Income	\$74,890	\$85,591	\$73,839	\$77,531
Total Housing Units	7,841	37,474	89,660	319,284
Median Home Value	\$611,078	\$703,782	\$647,964	\$708,432
Bachelors Degree	20.5%	20.7%	17.3%	19.1%
Graduate Degree	11.0%	15.9%	11.2%	9.8%

Projections (2025)

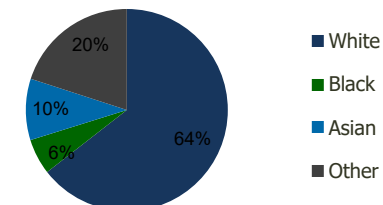
Projected Population	22,245	116,145	310,910	1,120,831
Projected 5 Year Pop Growth	0.9%	0.7%	0.8%	1.0%
Projected Households	8,207	38,854	93,514	336,210
Projected 5 Year Household Growth	0.9%	0.7%	0.8%	1.0%



Education (3-Mile)



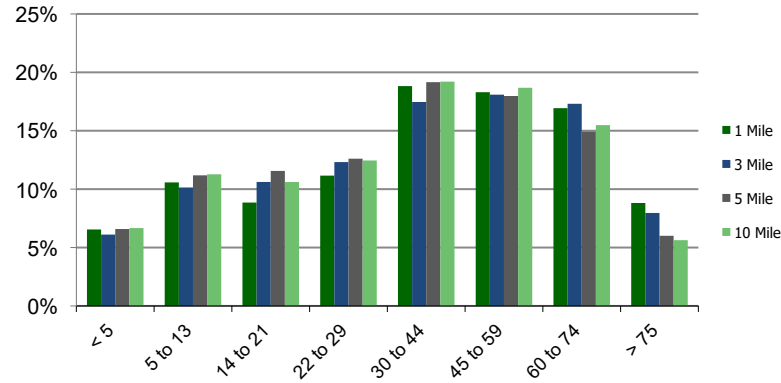
Daytime Population (3-Mile)



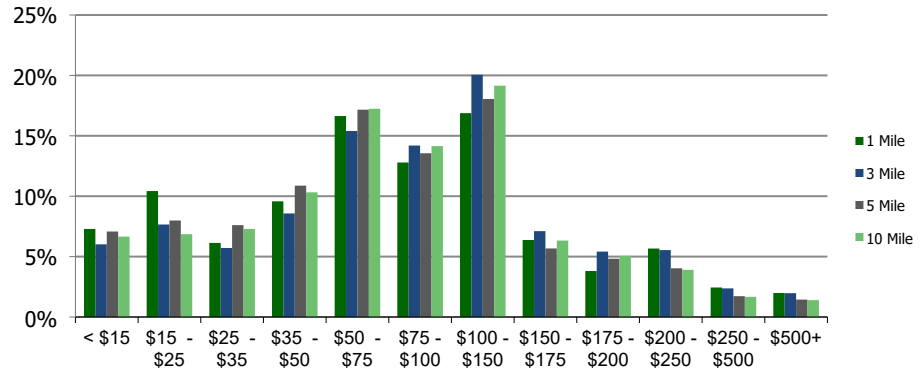
Ethnicity (3-Mile)

This report was produced using data from private and government sources deemed to be reliable and is herein provided without representation or warranty.

Population by Age Range



Household Income by Income Range (\$000)



114180-La Verne Towne Center La Verne, CA	1.00 Mile Radius	3.00 Mile Radius	5.00 Mile Radius	10.00 Mile Radius
---	-------------------------	-------------------------	-------------------------	--------------------------

Population	Current Estimated Population	21,259	112,198	298,327	1,064,407
	2010 Census Population	19,971	108,300	285,401	1,007,293
	2000 Census Population	19,392	109,562	281,108	982,861
	Historical Annual Growth 2000 to 2010	0.29%	-0.12%	0.15%	0.25%
	Estimated Annual Growth 2010 to 2020	0.58%	0.33%	0.41%	0.51%
	Projected Annual Growth 2020 to 2025	0.91%	0.69%	0.83%	1.04%
Households	Current Estimated Households	7,841	37,474	89,660	319,284
	2010 Census Households	7,356	36,047	85,485	302,085
	2000 Census Households	7,228	35,829	83,719	294,393
	Historical Annual Growth 2000 to 2010	0.2%	0.1%	0.2%	0.3%
	Estimated Annual Growth 2010 to 2020	0.6%	0.4%	0.4%	0.5%
	Projected Annual Growth 2020 to 2025	0.9%	0.7%	0.8%	1.0%
	Population per Household	2.7	2.8	3.2	3.3
Ethnicity	White	68.8%	64.5%	58.3%	54.6%
	Black or African American	5.3%	5.7%	5.1%	4.6%
	Asian & Pacific Islander	7.7%	9.8%	9.5%	14.7%
	Other Races	18.2%	20.0%	27.2%	26.1%
	Hispanic or Latino Population	39.2%	40.9%	54.3%	52.0%
	Non Hispanic or Latino Population	60.8%	59.1%	45.7%	48.0%

This report was produced using data from private and government sources deemed to be reliable and is herein provided without representation or warranty.