

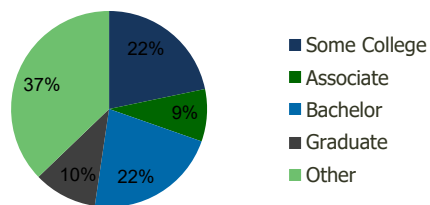
105510-La Mirada Theater Center La Mirada, CA	1.00 Mile Radius	3.00 Mile Radius	5.00 Mile Radius	10.00 Mile Radius
--	------------------	------------------	------------------	-------------------

Demographics (2021)

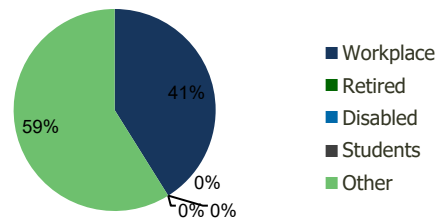
Current Population	19,802	179,997	567,883	2,174,307
Total Daytime Pop	25,885	188,080	571,640	2,321,081
Workplace Pop	7,513	77,302	212,275	847,565
Average Household Income	\$113,965	\$104,897	\$102,943	\$98,772
Median Household Income	\$101,313	\$85,773	\$83,115	\$78,827
Total Housing Units	5,877	53,816	168,575	649,016
Median Home Value	\$824,244	\$841,084	\$795,837	\$786,691
Bachelors Degree	22.9%	22.0%	20.4%	18.8%
Graduate Degree	11.0%	10.5%	9.5%	8.5%

Projections (2026)

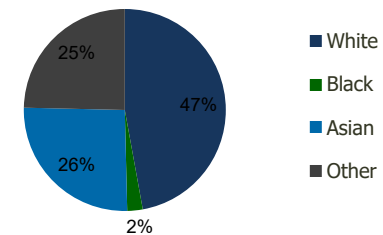
Projected Population	20,005	181,410	570,131	2,189,306
Projected 5 Year Pop Growth	0.2%	0.2%	0.1%	0.1%
Projected Households	5,945	54,233	169,231	653,364
Projected 5 Year Household Growth	0.2%	0.2%	0.1%	0.1%



Education (3-Mile)



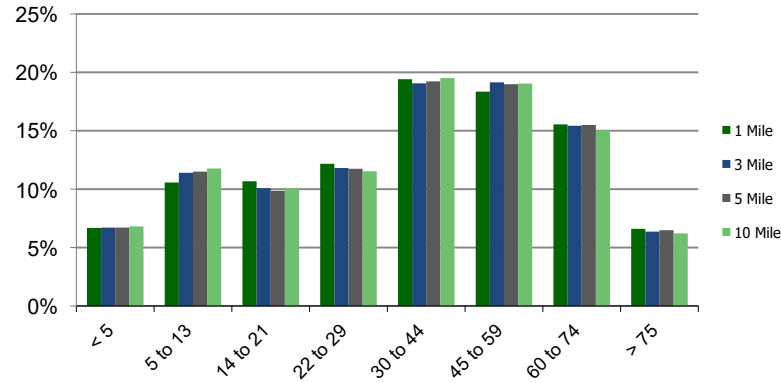
Daytime Population (3-Mile)



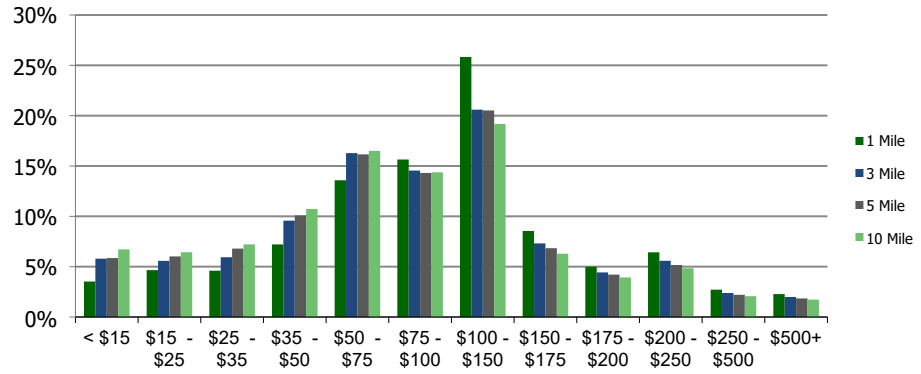
Ethnicity (3-Mile)

This report was produced using data from private and government sources deemed to be reliable and is herein provided without representation or warranty.

Population by Age Range



Household Income by Income Range (\$000)



105510-La Mirada Theater Center La Mirada, CA	1.00 Mile Radius	3.00 Mile Radius	5.00 Mile Radius	10.00 Mile Radius
---	---------------------	---------------------	---------------------	----------------------

		1.00 Mile Radius	3.00 Mile Radius	5.00 Mile Radius	10.00 Mile Radius
Population	Current Estimated Population	19,802	179,997	567,883	2,174,307
	2010 Census Population	19,912	175,240	554,630	2,119,751
	2000 Census Population	19,206	166,305	539,383	2,070,210
	Historical Annual Growth 2000 to 2010	0.36%	0.52%	0.28%	0.24%
	Estimated Annual Growth 2010 to 2020	-0.05%	0.23%	0.20%	0.22%
	Projected Annual Growth 2020 to 2025	0.20%	0.16%	0.08%	0.14%
Households	Current Estimated Households	5,877	53,816	168,575	649,016
	2010 Census Households	5,875	52,341	164,393	631,896
	2000 Census Households	5,898	50,673	161,776	624,918
	Historical Annual Growth 2000 to 2010	0.0%	0.3%	0.2%	0.1%
	Estimated Annual Growth 2010 to 2020	0.0%	0.2%	0.2%	0.2%
	Projected Annual Growth 2020 to 2025	0.2%	0.2%	0.1%	0.1%
	Population per Household	3.2	3.3	3.3	3.3
Ethnicity	White	55.7%	47.1%	48.7%	51.3%
	Black or African American	1.9%	2.5%	3.0%	3.6%
	Asian & Pacific Islander	21.8%	25.7%	22.3%	19.0%
	Other Races	20.6%	24.6%	26.0%	26.1%
	Hispanic or Latino Population	37.8%	45.7%	49.2%	51.9%
	Non Hispanic or Latino Population	62.2%	54.3%	50.8%	48.1%

This report was produced using data from private and government sources deemed to be reliable and is herein provided without representation or warranty.