

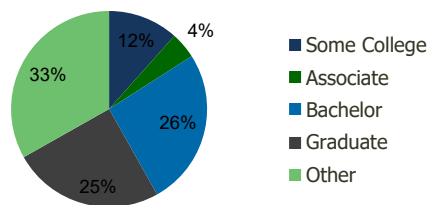
113750-Edgewater Commons Edgewater, NJ	1.00 Mile Radius	3.00 Mile Radius	5.00 Mile Radius	10.00 Mile Radius
---	---------------------	---------------------	---------------------	----------------------

## Demographics (2020)

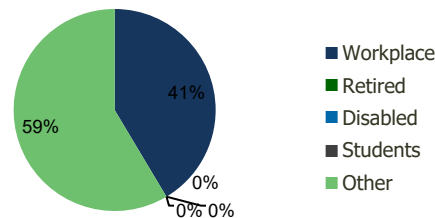
Current Population	44,126	933,373	2,254,431	6,509,034
Total Daytime Pop	49,363	1,045,103	3,694,236	8,529,420
Workplace Pop	11,591	432,926	2,214,497	4,355,889
Average Household Income	\$126,215	\$143,726	\$134,186	\$116,979
Median Household Income	\$86,803	\$79,489	\$76,698	\$72,571
Total Housing Units	17,808	405,813	969,362	2,593,170
Median Home Value	\$617,562	\$672,125	\$640,357	\$586,430
Bachelors Degree	27.5%	25.9%	25.5%	23.6%
Graduate Degree	20.8%	25.0%	21.4%	16.9%

## Projections (2025)

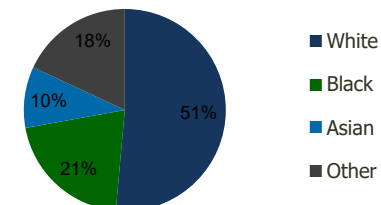
Projected Population	45,885	936,534	2,301,035	6,662,288
Projected 5 Year Pop Growth	0.8%	0.1%	0.4%	0.5%
Projected Households	18,609	407,343	990,306	2,657,179
Projected 5 Year Household Growth	0.9%	0.1%	0.4%	0.5%



Education (3-Mile)



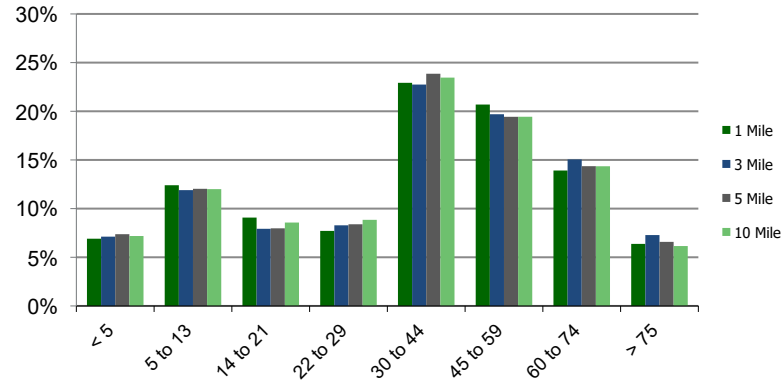
Daytime Population (3-Mile)



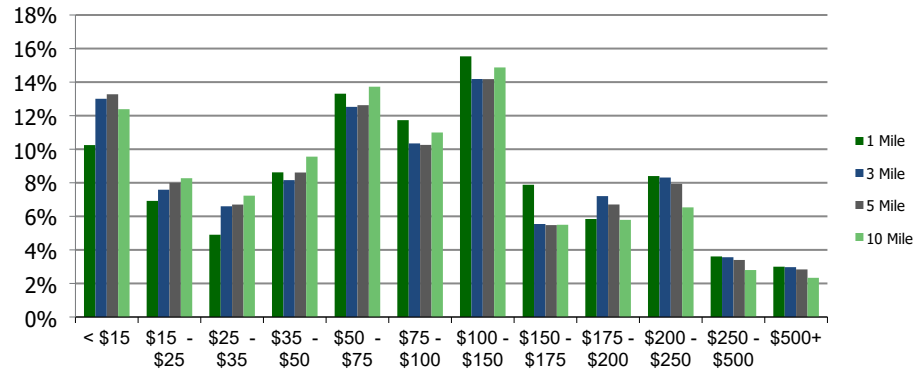
Ethnicity (3-Mile)

This report was produced using data from private and government sources deemed to be reliable and is herein provided without representation or warranty.

**Population by Age Range**



**Household Income by Income Range (\$000)**



**113750-Edgewater Commons**  
Edgewater, NJ

1.00 Mile  
Radius

3.00 Mile  
Radius

5.00 Mile  
Radius

10.00 Mile  
Radius

	1.00 Mile Radius	3.00 Mile Radius	5.00 Mile Radius	10.00 Mile Radius
<b>Population</b>	Current Estimated Population	44,126	933,373	2,254,431
	2010 Census Population	40,630	898,624	2,145,655
	2000 Census Population	35,979	877,557	2,085,701
	Historical Annual Growth 2000 to 2010	1.22%	0.24%	0.28%
	Estimated Annual Growth 2010 to 2020	0.77%	0.35%	0.46%
	Projected Annual Growth 2020 to 2025	0.78%	0.07%	0.41%
<b>Households</b>	Current Estimated Households	17,808	405,813	969,362
	2010 Census Households	16,212	390,449	919,736
	2000 Census Households	14,589	383,705	888,970
	Historical Annual Growth 2000 to 2010	1.1%	0.2%	0.3%
	Estimated Annual Growth 2010 to 2020	0.9%	0.4%	0.5%
	Projected Annual Growth 2020 to 2025	0.9%	0.1%	0.4%
	Population per Household	2.4	2.2	2.3
<b>Ethnicity</b>	White	65.7%	51.4%	49.4%
	Black or African American	4.5%	20.7%	18.6%
	Asian & Pacific Islander	17.0%	9.8%	9.4%
	Other Races	12.7%	18.1%	22.6%
	Hispanic or Latino Population	32.7%	34.0%	39.0%
	Non Hispanic or Latino Population	67.3%	66.0%	61.0%

This report was produced using data from private and government sources deemed to be reliable and is herein provided without representation or warranty.