

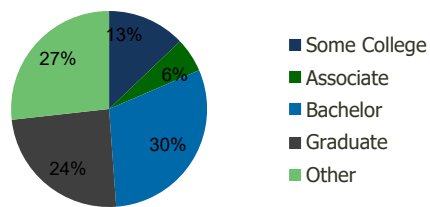
| 100470-East Windsor Village<br>East Windsor, NJ | 1.00 Mile<br>Radius | 3.00 Mile<br>Radius | 5.00 Mile<br>Radius | 10.00 Mile<br>Radius |
|---|---------------------|---------------------|---------------------|----------------------|
|---|---------------------|---------------------|---------------------|----------------------|

## Demographics (2020)

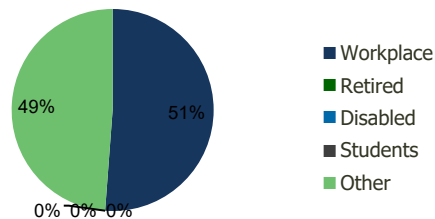
|                          |           |           |           |           |
|--------------------------|-----------|-----------|-----------|-----------|
| Current Population       | 8,379     | 35,657    | 85,890    | 317,167   |
| Total Daytime Pop        | 11,430    | 44,426    | 114,426   | 461,218   |
| Workplace Pop            | 6,888     | 22,740    | 56,847    | 252,818   |
| Average Household Income | \$94,785  | \$130,692 | \$148,519 | \$144,825 |
| Median Household Income  | \$75,956  | \$94,919  | \$111,439 | \$109,543 |
| Total Housing Units      | 3,485     | 13,318    | 32,665    | 119,628   |
| Median Home Value        | \$334,479 | \$380,756 | \$462,671 | \$431,001 |
| Bachelors Degree         | 28.3%     | 30.3%     | 31.3%     | 30.3%     |
| Graduate Degree          | 20.5%     | 24.4%     | 32.1%     | 27.7%     |

## Projections (2025)

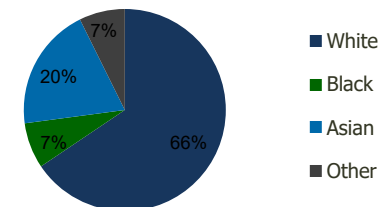
|                                   |       |        |        |         |
|-----------------------------------|-------|--------|--------|---------|
| Projected Population              | 8,784 | 37,023 | 89,599 | 328,757 |
| Projected 5 Year Pop Growth       | 1.0%  | 0.8%   | 0.8%   | 0.7%    |
| Projected Households              | 3,667 | 13,852 | 34,079 | 124,143 |
| Projected 5 Year Household Growth | 1.0%  | 0.8%   | 0.9%   | 0.7%    |



Education (3-Mile)



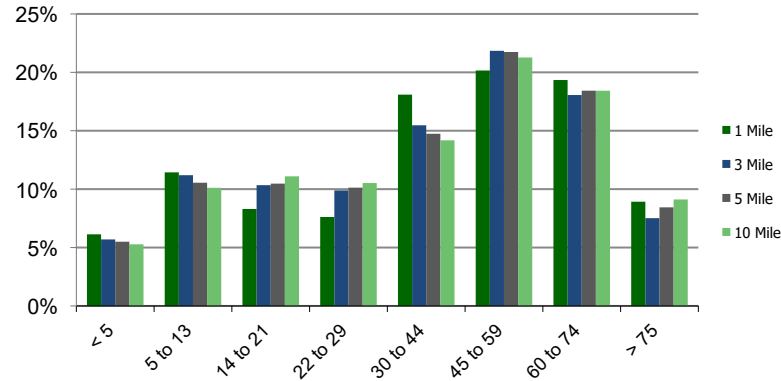
Daytime Population (3-Mile)



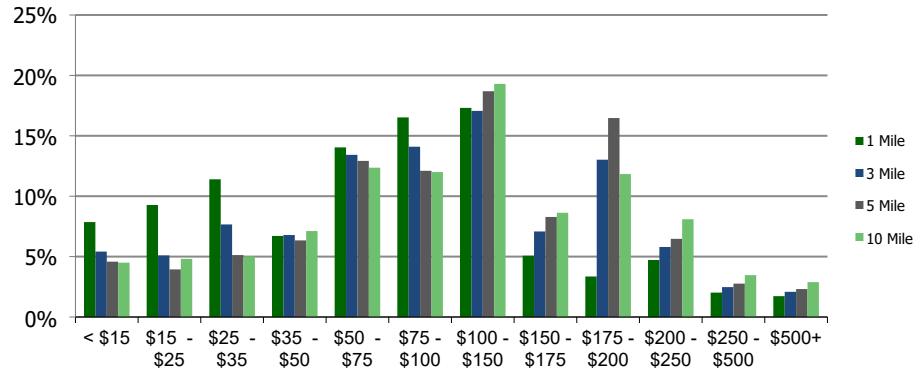
Ethnicity (3-Mile)

This report was produced using data from private and government sources deemed to be reliable and is herein provided without representation or warranty.

**Population by Age Range**



**Household Income by Income Range (\$000)**



| 100470-East Windsor Village<br>East Windsor, NJ | 1.00 Mile<br>Radius | 3.00 Mile<br>Radius | 5.00 Mile<br>Radius | 10.00 Mile<br>Radius |
|---|---------------------|---------------------|---------------------|----------------------|
|---|---------------------|---------------------|---------------------|----------------------|

|                   |                                       |       |        |        |         |
|-------------------|---------------------------------------|-------|--------|--------|---------|
| <b>Population</b> | Current Estimated Population          | 8,379 | 35,657 | 85,890 | 317,167 |
|                   | 2010 Census Population                | 7,794 | 35,201 | 81,999 | 305,803 |
|                   | 2000 Census Population                | 7,390 | 31,570 | 71,686 | 264,773 |
|                   | Historical Annual Growth 2000 to 2010 | 0.53% | 1.09%  | 1.35%  | 1.45%   |
|                   | Estimated Annual Growth 2010 to 2020  | 0.68% | 0.12%  | 0.43%  | 0.34%   |
|                   | Projected Annual Growth 2020 to 2025  | 0.95% | 0.75%  | 0.85%  | 0.72%   |
| <b>Households</b> | Current Estimated Households          | 3,485 | 13,318 | 32,665 | 119,628 |
|                   | 2010 Census Households                | 3,201 | 13,091 | 31,195 | 115,358 |
|                   | 2000 Census Households                | 2,796 | 11,725 | 27,571 | 99,552  |
|                   | Historical Annual Growth 2000 to 2010 | 1.4%  | 1.1%   | 1.2%   | 1.5%    |
|                   | Estimated Annual Growth 2010 to 2020  | 0.8%  | 0.2%   | 0.4%   | 0.3%    |
|                   | Projected Annual Growth 2020 to 2025  | 1.0%  | 0.8%   | 0.9%   | 0.7%    |
|                   | Population per Household              | 2.4   | 2.7    | 2.6    | 2.6     |
| <b>Ethnicity</b>  | White                                 | 68.9% | 65.6%  | 58.4%  | 67.9%   |
|                   | Black or African American             | 7.0%  | 7.3%   | 6.3%   | 6.0%    |
|                   | Asian & Pacific Islander              | 17.1% | 19.8%  | 29.9%  | 21.8%   |
|                   | Other Races                           | 7.0%  | 7.3%   | 5.4%   | 4.3%    |
|                   | Hispanic or Latino Population         | 19.8% | 18.4%  | 11.2%  | 7.9%    |
|                   | Non Hispanic or Latino Population     | 80.2% | 81.6%  | 88.8%  | 92.1%   |

This report was produced using data from private and government sources deemed to be reliable and is herein provided without representation or warranty.