

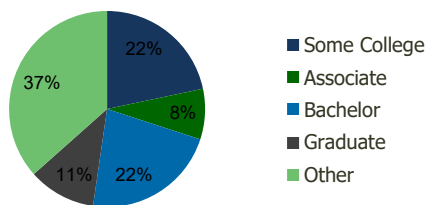
114290-Pavilions Place Westminster, CA	1.00 Mile Radius	3.00 Mile Radius	5.00 Mile Radius	10.00 Mile Radius
---	---------------------	---------------------	---------------------	----------------------

Demographics (2021)

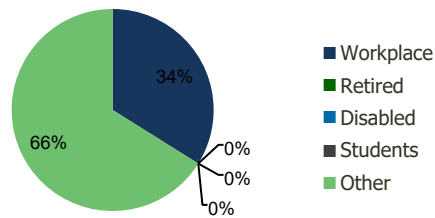
Current Population	30,817	232,103	571,443	1,854,386
Total Daytime Pop	30,199	242,248	573,673	2,203,156
Workplace Pop	14,218	82,110	187,298	896,182
Average Household Income	\$102,949	\$106,689	\$110,544	\$109,054
Median Household Income	\$82,557	\$81,305	\$83,791	\$82,460
Total Housing Units	10,450	74,369	180,951	582,288
Median Home Value	\$912,721	\$926,622	\$881,795	\$841,811
Bachelors Degree	20.8%	22.3%	21.4%	21.1%
Graduate Degree	10.8%	11.1%	10.4%	10.2%

Projections (2026)

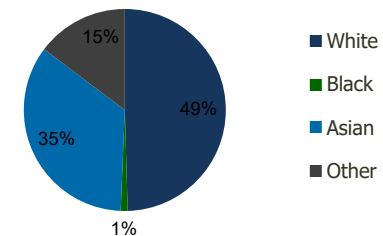
Projected Population	31,789	232,265	568,690	1,856,732
Projected 5 Year Pop Growth	0.6%	0.0%	-0.1%	0.0%
Projected Households	10,819	74,537	180,236	583,659
Projected 5 Year Household Growth	0.7%	0.0%	-0.1%	0.0%



Education (3-Mile)



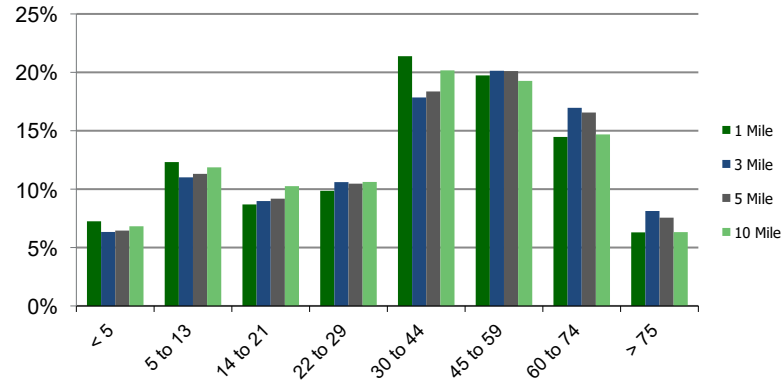
Daytime Population (3-Mile)



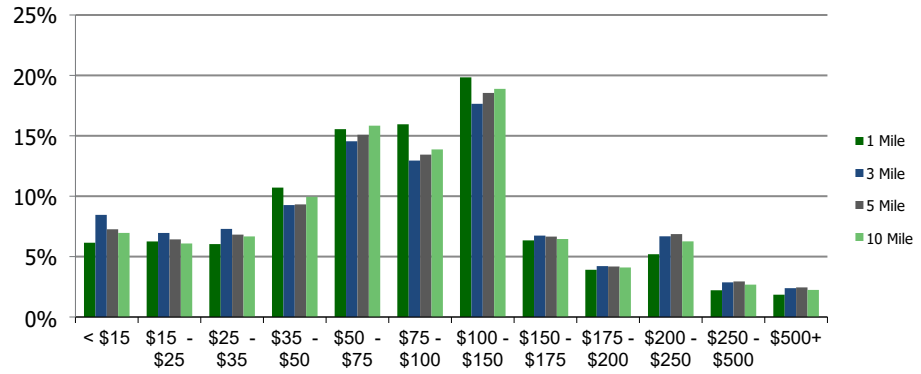
Ethnicity (3-Mile)

This report was produced using data from private and government sources deemed to be reliable and is herein provided without representation or warranty.

Population by Age Range



Household Income by Income Range (\$000)



	1.00 Mile Radius	3.00 Mile Radius	5.00 Mile Radius	10.00 Mile Radius
114290-Pavilions Place				
Westminster, CA				

Population	Current Estimated Population	30,817	232,103	571,443	1,854,386
	2010 Census Population	27,396	222,328	548,050	1,776,152
	2000 Census Population	27,954	220,764	543,455	1,749,300
	Historical Annual Growth 2000 to 2010	-0.20%	0.07%	0.08%	0.15%
	Estimated Annual Growth 2010 to 2020	1.01%	0.37%	0.36%	0.37%
	Projected Annual Growth 2020 to 2025	0.62%	0.01%	-0.10%	0.03%
Households	Current Estimated Households	10,450	74,369	180,951	582,288
	2010 Census Households	9,154	71,074	173,451	556,278
	2000 Census Households	9,366	70,609	172,644	548,297
	Historical Annual Growth 2000 to 2010	-0.2%	0.1%	0.0%	0.1%
	Estimated Annual Growth 2010 to 2020	1.1%	0.4%	0.4%	0.4%
	Projected Annual Growth 2020 to 2025	0.7%	0.0%	-0.1%	0.0%
	Population per Household	2.9	3.1	3.1	3.1
Ethnicity	White	55.0%	49.5%	51.2%	55.4%
	Black or African American	1.7%	1.1%	1.1%	2.1%
	Asian & Pacific Islander	21.8%	34.6%	29.5%	19.7%
	Other Races	21.5%	14.7%	18.2%	22.8%
	Hispanic or Latino Population	31.3%	22.4%	29.4%	42.4%
	Non Hispanic or Latino Population	68.7%	77.6%	70.6%	57.6%

This report was produced using data from private and government sources deemed to be reliable and is herein provided without representation or warranty.