

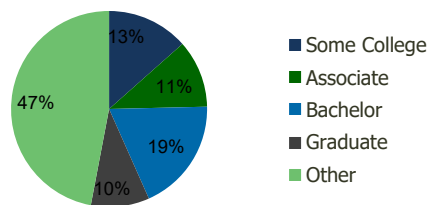
115890-Flagler Park Plaza Miami, FL	1.00 Mile Radius	3.00 Mile Radius	5.00 Mile Radius	10.00 Mile Radius
--	---------------------	---------------------	---------------------	----------------------

Demographics (2020)

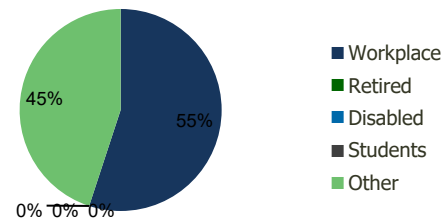
Current Population	29,673	180,808	435,946	1,589,659
Total Daytime Pop	35,550	293,494	698,230	2,025,438
Workplace Pop	19,368	161,559	372,677	893,574
Average Household Income	\$65,618	\$70,855	\$82,334	\$83,373
Median Household Income	\$51,704	\$53,501	\$58,191	\$54,680
Total Housing Units	10,714	61,272	149,242	557,267
Median Home Value	\$350,925	\$451,746	\$501,679	\$477,464
Bachelors Degree	22.8%	18.7%	20.9%	19.5%
Graduate Degree	8.6%	9.6%	12.3%	11.8%

Projections (2025)

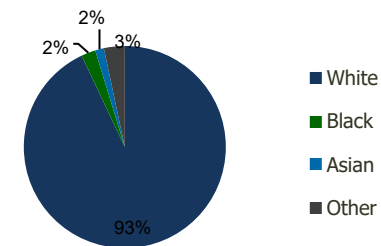
Projected Population	29,660	188,854	452,632	1,657,723
Projected 5 Year Pop Growth	0.0%	0.9%	0.8%	0.8%
Projected Households	10,711	63,937	154,950	585,316
Projected 5 Year Household Growth	0.0%	0.9%	0.8%	1.0%



Education (3-Mile)



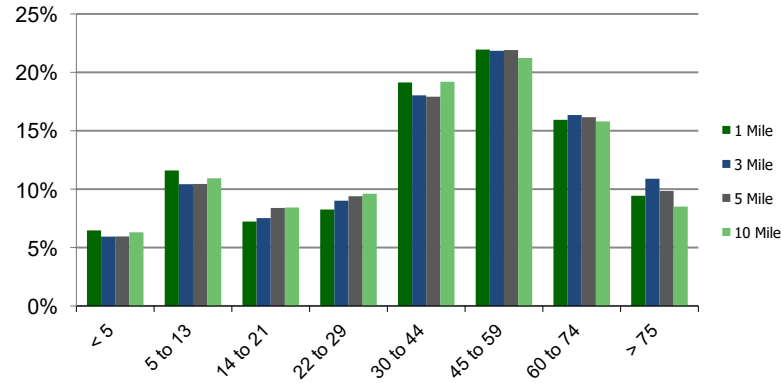
Daytime Population (3-Mile)



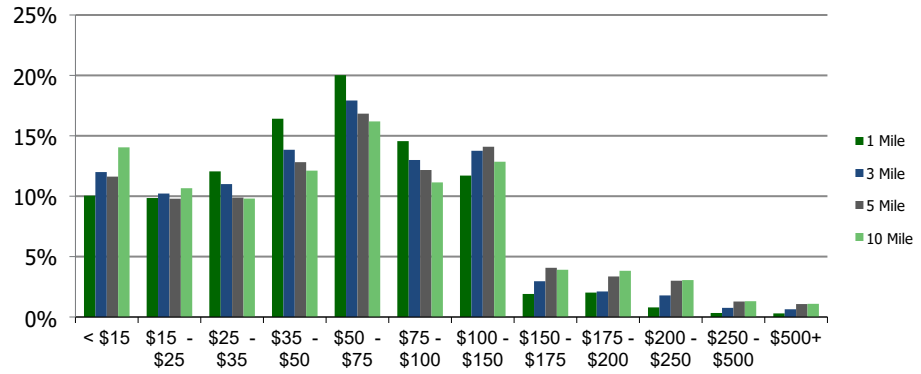
Ethnicity (3-Mile)

This report was produced using data from private and government sources deemed to be reliable and is herein provided without representation or warranty.

Population by Age Range



Household Income by Income Range (\$000)



115890-Flagler Park Plaza Miami, FL

1.00 Mile
Radius

3.00 Mile
Radius

5.00 Mile
Radius

10.00 Mile
Radius

	1.00 Mile Radius	3.00 Mile Radius	5.00 Mile Radius	10.00 Mile Radius
Population	Current Estimated Population	29,673	180,808	435,946
	2010 Census Population	31,808	169,877	411,474
	2000 Census Population	29,806	167,488	387,212
	Historical Annual Growth 2000 to 2010	0.65%	0.14%	0.61%
	Estimated Annual Growth 2010 to 2020	-0.64%	0.58%	0.54%
	Projected Annual Growth 2020 to 2025	-0.01%	0.87%	0.75%
Households	Current Estimated Households	10,714	61,272	149,242
	2010 Census Households	11,464	57,754	140,871
	2000 Census Households	10,434	56,470	133,538
	Historical Annual Growth 2000 to 2010	0.9%	0.2%	0.5%
	Estimated Annual Growth 2010 to 2020	-0.6%	0.6%	0.5%
	Projected Annual Growth 2020 to 2025	0.0%	0.9%	0.8%
	Population per Household	2.8	2.9	2.9
Ethnicity	White	93.0%	93.0%	92.2%
	Black or African American	1.7%	2.3%	2.8%
	Asian & Pacific Islander	1.8%	1.4%	1.5%
	Other Races	3.5%	3.3%	3.4%
	Hispanic or Latino Population	91.9%	90.8%	85.8%
	Non Hispanic or Latino Population	8.1%	9.2%	14.2%

This report was produced using data from private and government sources deemed to be reliable and is herein provided without representation or warranty.