

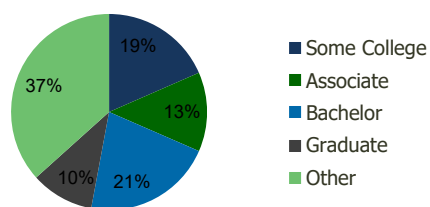
115710-Corsica Square S.C. Miami, FL	1.00 Mile Radius	3.00 Mile Radius	5.00 Mile Radius	10.00 Mile Radius
---	---------------------	---------------------	---------------------	----------------------

Demographics (2020)

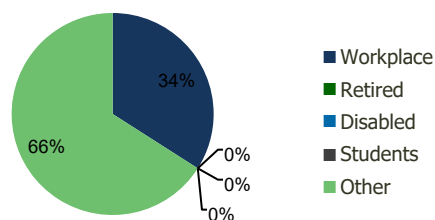
Current Population	10,699	78,836	240,199	797,527
Total Daytime Pop	5,905	61,517	189,788	679,209
Workplace Pop	1,142	20,939	59,928	215,666
Average Household Income	\$111,692	\$92,761	\$82,732	\$90,069
Median Household Income	\$92,100	\$76,539	\$67,573	\$66,709
Total Housing Units	3,035	23,143	74,096	252,114
Median Home Value	\$608,619	\$519,620	\$471,423	\$486,409
Bachelors Degree	22.9%	21.4%	22.2%	21.3%
Graduate Degree	10.5%	10.4%	9.3%	10.8%

Projections (2025)

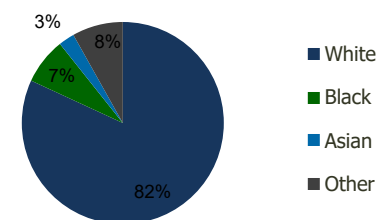
Projected Population	11,150	83,347	250,526	836,313
Projected 5 Year Pop Growth	0.8%	1.1%	0.8%	1.0%
Projected Households	3,164	24,433	77,140	263,766
Projected 5 Year Household Growth	0.8%	1.1%	0.8%	0.9%



Education (3-Mile)



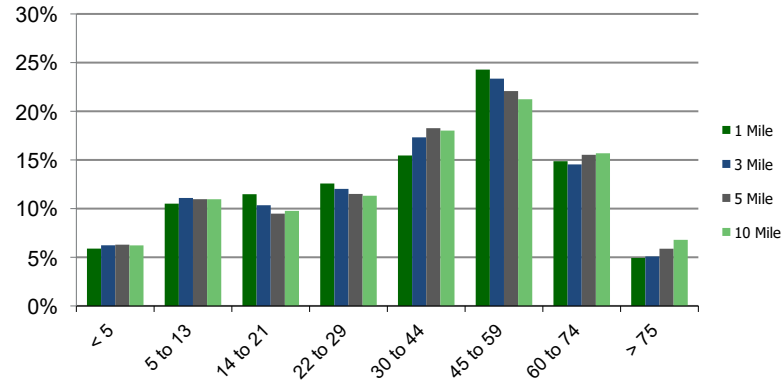
Daytime Population (3-Mile)



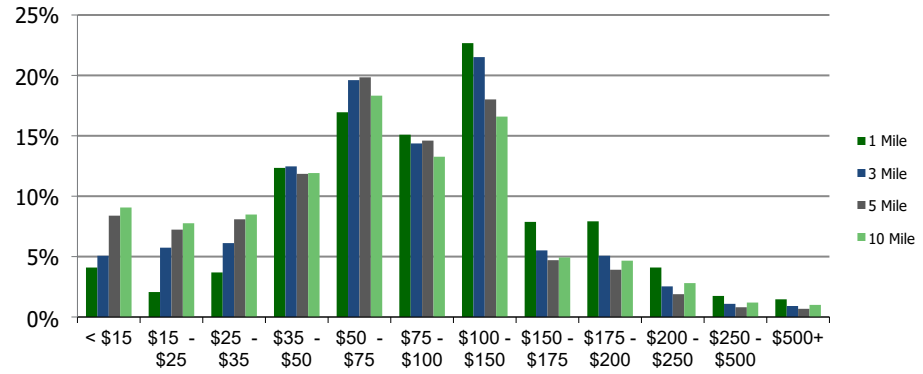
Ethnicity (3-Mile)

This report was produced using data from private and government sources deemed to be reliable and is herein provided without representation or warranty.

Population by Age Range



Household Income by Income Range (\$000)



115710-Corsica Square S.C.
Miami, FL

1.00 Mile
Radius

3.00 Mile
Radius

5.00 Mile
Radius

10.00 Mile
Radius

	1.00 Mile Radius	3.00 Mile Radius	5.00 Mile Radius	10.00 Mile Radius
Population	Current Estimated Population	10,699	78,836	240,199
	2010 Census Population	10,204	69,144	218,032
	2000 Census Population	6,848	56,241	192,551
	Historical Annual Growth 2000 to 2010	4.07%	2.09%	1.25%
	Estimated Annual Growth 2010 to 2020	0.44%	1.23%	0.90%
	Projected Annual Growth 2020 to 2025	0.83%	1.12%	0.85%
Households	Current Estimated Households	3,035	23,143	74,096
	2010 Census Households	2,896	20,377	67,573
	2000 Census Households	1,985	16,672	59,753
	Historical Annual Growth 2000 to 2010	3.8%	2.0%	1.2%
	Estimated Annual Growth 2010 to 2020	0.4%	1.2%	0.9%
	Projected Annual Growth 2020 to 2025	0.8%	1.1%	0.8%
	Population per Household	3.5	3.4	3.2
Ethnicity	White	77.0%	81.9%	81.4%
	Black or African American	11.0%	7.4%	9.2%
	Asian & Pacific Islander	3.2%	2.6%	2.6%
	Other Races	8.9%	8.1%	6.9%
	Hispanic or Latino Population	68.2%	75.0%	73.9%
	Non Hispanic or Latino Population	31.8%	25.0%	26.1%

This report was produced using data from private and government sources deemed to be reliable and is herein provided without representation or warranty.