

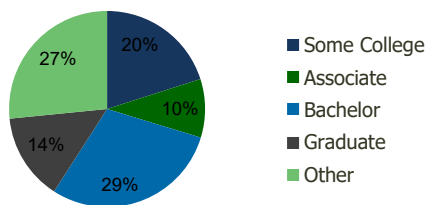
113350-Laband Village S.C. Chino Hills, CA	1.00 Mile Radius	3.00 Mile Radius	5.00 Mile Radius	10.00 Mile Radius
-----------------------------------------------	---------------------	---------------------	---------------------	----------------------

Demographics (2021)

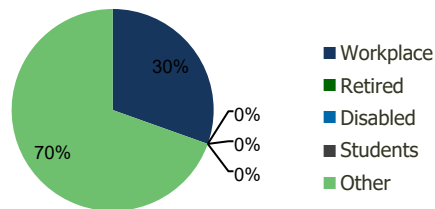
Current Population	11,460	83,509	267,105	1,152,599
Total Daytime Pop	7,302	70,023	256,440	1,229,349
Workplace Pop	1,601	21,323	97,430	464,600
Average Household Income	\$145,123	\$122,594	\$103,184	\$107,868
Median Household Income	\$122,112	\$102,640	\$81,563	\$84,760
Total Housing Units	3,418	25,071	75,294	345,714
Median Home Value	\$1,550,183	\$1,137,571	\$894,908	\$872,629
Bachelors Degree	38.4%	29.4%	22.1%	22.1%
Graduate Degree	17.6%	14.3%	10.3%	11.1%

Projections (2026)

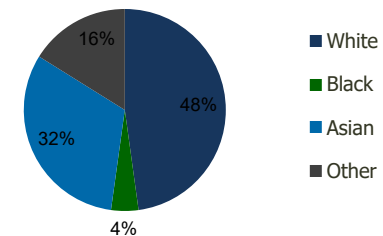
Projected Population	12,028	86,883	279,583	1,206,404
Projected 5 Year Pop Growth	1.0%	0.8%	0.9%	0.9%
Projected Households	3,586	26,093	78,832	361,442
Projected 5 Year Household Growth	1.0%	0.8%	0.9%	0.9%



Education (3-Mile)



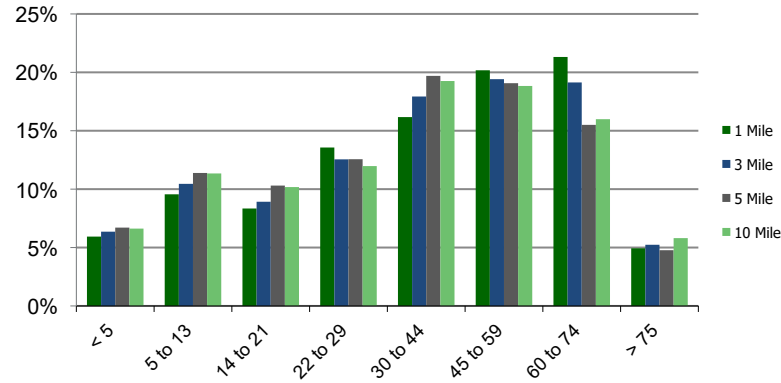
Daytime Population (3-Mile)



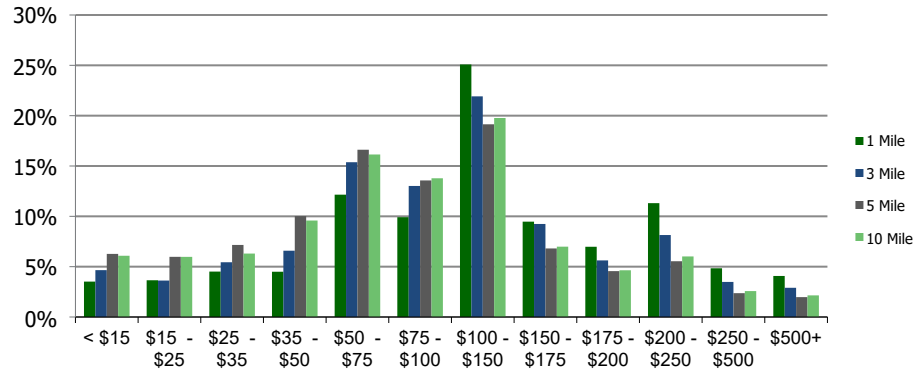
Ethnicity (3-Mile)

This report was produced using data from private and government sources deemed to be reliable and is herein provided without representation or warranty.

Population by Age Range



Household Income by Income Range (\$000)



113350-Laband Village S.C. Chino Hills, CA	1.00 Mile Radius	3.00 Mile Radius	5.00 Mile Radius	10.00 Mile Radius
-----------------------------------------------	------------------	------------------	------------------	-------------------

Population	Current Estimated Population	11,460	83,509	267,105	1,152,599
	2010 Census Population	10,979	80,448	251,092	1,073,443
	2000 Census Population	10,856	81,875	246,493	1,028,559
	Historical Annual Growth 2000 to 2010	0.11%	-0.18%	0.19%	0.43%
	Estimated Annual Growth 2010 to 2020	0.37%	0.32%	0.53%	0.61%
	Projected Annual Growth 2020 to 2025	0.97%	0.80%	0.92%	0.92%
Households	Current Estimated Households	3,418	25,071	75,294	345,714
	2010 Census Households	3,279	24,170	70,752	321,720
	2000 Census Households	3,056	23,508	68,105	305,569
	Historical Annual Growth 2000 to 2010	0.7%	0.3%	0.4%	0.5%
	Estimated Annual Growth 2010 to 2020	0.4%	0.3%	0.5%	0.6%
	Projected Annual Growth 2020 to 2025	1.0%	0.8%	0.9%	0.9%
	Population per Household	3.3	3.3	3.5	3.3
Ethnicity	White	35.9%	47.8%	46.8%	52.2%
	Black or African American	4.3%	4.4%	4.3%	4.2%
	Asian & Pacific Islander	51.2%	31.7%	23.7%	20.1%
	Other Races	8.5%	16.1%	25.2%	23.5%
	Hispanic or Latino Population	19.0%	34.3%	50.2%	45.9%
	Non Hispanic or Latino Population	81.0%	65.7%	49.8%	54.1%

This report was produced using data from private and government sources deemed to be reliable and is herein provided without representation or warranty.