

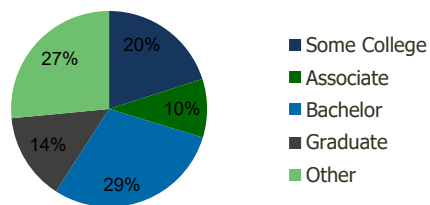
113350-Laband Village S.C. Chino Hills, CA	1.00 Mile Radius	3.00 Mile Radius	5.00 Mile Radius	10.00 Mile Radius
---	---------------------	---------------------	---------------------	----------------------

Demographics (2020)

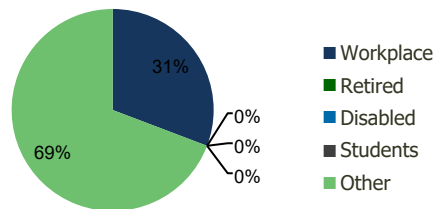
Current Population	11,556	83,525	267,886	1,152,947
Total Daytime Pop	7,617	73,111	271,416	1,294,410
Workplace Pop	1,669	22,497	104,264	496,263
Average Household Income	\$142,792	\$120,552	\$101,220	\$105,641
Median Household Income	\$120,552	\$101,013	\$79,895	\$83,094
Total Housing Units	3,452	25,083	75,536	345,760
Median Home Value	\$1,300,645	\$906,709	\$776,888	\$758,917
Bachelors Degree	38.4%	29.4%	22.2%	22.1%
Graduate Degree	17.6%	14.4%	10.4%	11.1%

Projections (2025)

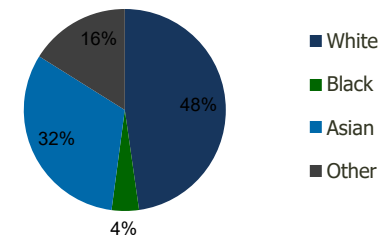
Projected Population	12,249	87,751	283,570	1,217,831
Projected 5 Year Pop Growth	1.2%	1.0%	1.1%	1.1%
Projected Households	3,659	26,367	80,009	364,764
Projected 5 Year Household Growth	1.2%	1.0%	1.2%	1.1%



Education (3-Mile)



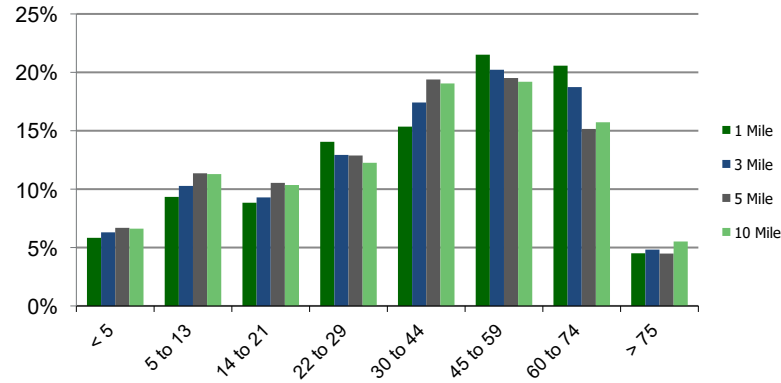
Daytime Population (3-Mile)



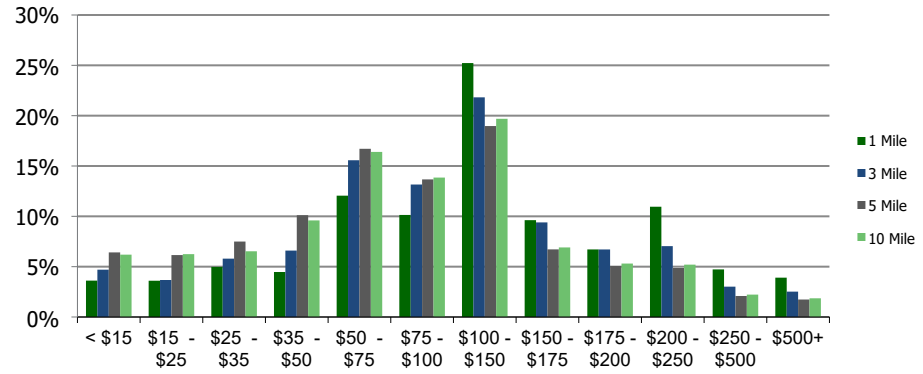
Ethnicity (3-Mile)

This report was produced using data from private and government sources deemed to be reliable and is herein provided without representation or warranty.

Population by Age Range



Household Income by Income Range (\$000)



113350-Laband Village S.C.
Chino Hills, CA

1.00 Mile
Radius

3.00 Mile
Radius

5.00 Mile
Radius

10.00 Mile
Radius

	1.00 Mile Radius	3.00 Mile Radius	5.00 Mile Radius	10.00 Mile Radius
Population				
Current Estimated Population	11,556	83,525	267,886	1,152,947
2010 Census Population	10,979	80,448	251,092	1,073,443
2000 Census Population	10,856	81,875	246,493	1,028,559
Historical Annual Growth 2000 to 2010	0.11%	-0.18%	0.19%	0.43%
Estimated Annual Growth 2010 to 2020	0.48%	0.35%	0.60%	0.67%
Projected Annual Growth 2020 to 2025	1.17%	0.99%	1.14%	1.10%
Households				
Current Estimated Households	3,452	25,083	75,536	345,760
2010 Census Households	3,279	24,170	70,752	321,720
2000 Census Households	3,056	23,508	68,105	305,569
Historical Annual Growth 2000 to 2010	0.7%	0.3%	0.4%	0.5%
Estimated Annual Growth 2010 to 2020	0.5%	0.3%	0.6%	0.7%
Projected Annual Growth 2020 to 2025	1.2%	1.0%	1.2%	1.1%
Population per Household	3.3	3.3	3.5	3.3
Ethnicity				
White	35.9%	47.7%	46.7%	52.1%
Black or African American	4.3%	4.4%	4.3%	4.2%
Asian & Pacific Islander	51.2%	31.8%	23.8%	20.1%
Other Races	8.6%	16.1%	25.2%	23.5%
Hispanic or Latino Population	18.9%	34.2%	50.2%	45.9%
Non Hispanic or Latino Population	81.1%	65.8%	49.8%	54.1%

This report was produced using data from private and government sources deemed to be reliable and is herein provided without representation or warranty.