

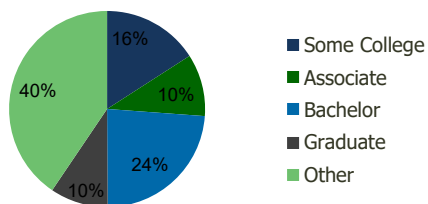
113900-Miller West Plaza Miami, FL	1.00 Mile Radius	3.00 Mile Radius	5.00 Mile Radius	10.00 Mile Radius
---------------------------------------	---------------------	---------------------	---------------------	----------------------

Demographics (2021)

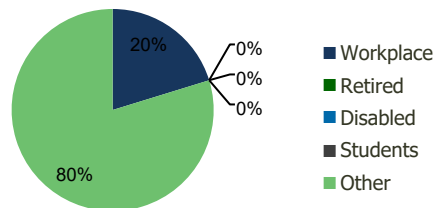
Current Population	24,560	168,910	314,038	832,282
Total Daytime Pop	16,547	119,906	237,219	874,869
Workplace Pop	1,768	24,273	63,668	358,511
Average Household Income	\$102,747	\$85,219	\$86,285	\$92,811
Median Household Income	\$86,112	\$69,852	\$69,506	\$69,587
Total Housing Units	6,905	51,469	97,659	269,546
Median Home Value	\$649,477	\$570,677	\$574,573	\$593,074
Bachelors Degree	26.9%	23.7%	23.1%	22.6%
Graduate Degree	10.8%	9.6%	9.8%	12.1%

Projections (2026)

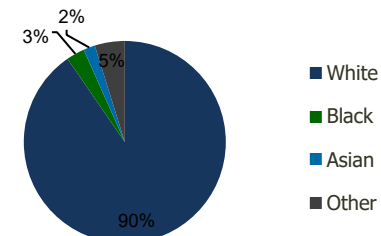
Projected Population	25,007	172,136	318,200	852,906
Projected 5 Year Pop Growth	0.4%	0.4%	0.3%	0.5%
Projected Households	7,030	52,393	98,821	276,149
Projected 5 Year Household Growth	0.4%	0.4%	0.2%	0.5%



Education (3-Mile)



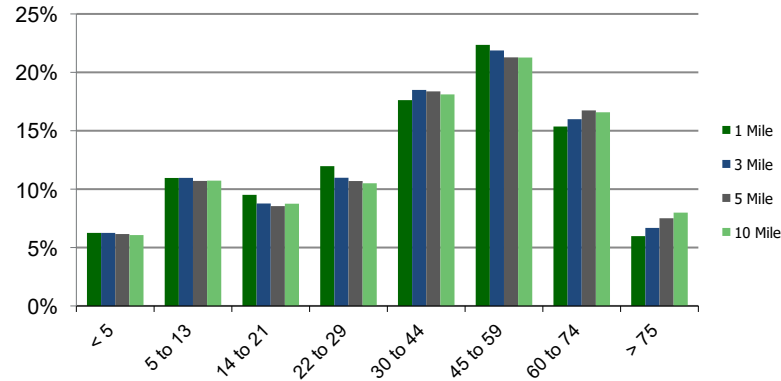
Daytime Population (3-Mile)



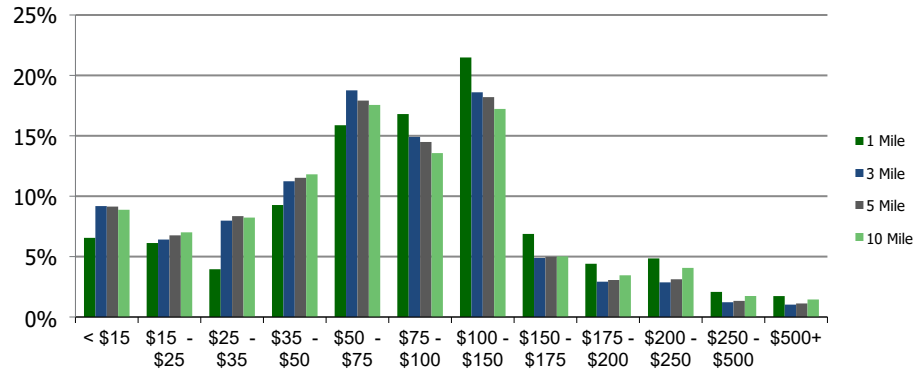
Ethnicity (3-Mile)

This report was produced using data from private and government sources deemed to be reliable and is herein provided without representation or warranty.

Population by Age Range



Household Income by Income Range (\$000)



113900-Miller West Plaza
Miami, FL

1.00 Mile
Radius

3.00 Mile
Radius

5.00 Mile
Radius

10.00 Mile
Radius

	1.00 Mile Radius	3.00 Mile Radius	5.00 Mile Radius	10.00 Mile Radius
Population	Current Estimated Population	24,560	168,910	314,038
	2010 Census Population	24,144	158,809	298,829
	2000 Census Population	14,377	129,139	262,929
	Historical Annual Growth 2000 to 2010	5.32%	2.09%	1.29%
	Estimated Annual Growth 2010 to 2020	0.15%	0.53%	0.42%
	Projected Annual Growth 2020 to 2025	0.36%	0.38%	0.26%
Households	Current Estimated Households	6,905	51,469	97,659
	2010 Census Households	6,786	48,486	93,235
	2000 Census Households	4,162	39,707	82,168
	Historical Annual Growth 2000 to 2010	5.0%	2.0%	1.3%
	Estimated Annual Growth 2010 to 2020	0.1%	0.5%	0.4%
	Projected Annual Growth 2020 to 2025	0.4%	0.4%	0.2%
	Population per Household	3.6	3.2	3.2
Ethnicity	White	90.1%	90.4%	90.1%
	Black or African American	2.5%	2.9%	3.1%
	Asian & Pacific Islander	2.1%	1.9%	1.9%
	Other Races	5.3%	4.8%	4.8%
	Hispanic or Latino Population	88.1%	86.6%	84.3%
	Non Hispanic or Latino Population	11.9%	13.4%	15.7%

This report was produced using data from private and government sources deemed to be reliable and is herein provided without representation or warranty.