

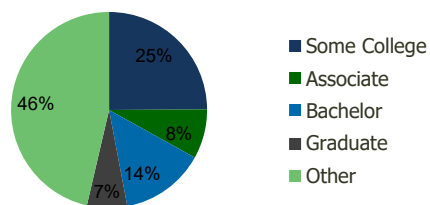
105460-Corona Hills Plaza Corona, CA	1.00 Mile Radius	3.00 Mile Radius	5.00 Mile Radius	10.00 Mile Radius
---	---------------------	---------------------	---------------------	----------------------

Demographics (2019)

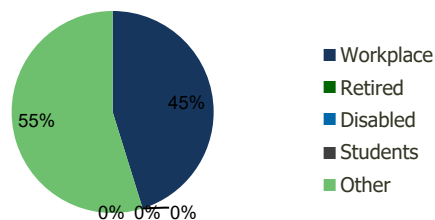
Current Population	25,594	110,366	292,654	660,130
Total Daytime Pop	22,900	124,469	288,167	659,527
Workplace Pop	9,351	56,257	109,676	208,426
Average Household Income	\$79,853	\$83,357	\$92,125	\$96,284
Median Household Income	\$66,525	\$67,842	\$73,560	\$77,497
Total Housing Units	7,595	33,202	83,006	188,764
Median Home Value	\$648,270	\$663,830	\$719,919	\$726,381
Bachelors Degree	13.2%	13.9%	13.8%	14.9%
Graduate Degree	6.6%	6.6%	7.1%	7.8%

Projections (2024)

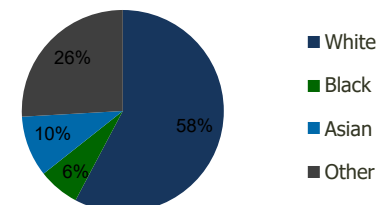
Projected Population	27,598	118,775	314,970	727,257
Projected 5 Year Pop Growth	1.5%	1.5%	1.5%	2.0%
Projected Households	8,223	35,795	89,480	208,003
Projected 5 Year Household Growth	1.6%	1.5%	1.5%	2.0%



Education (3-Mile)



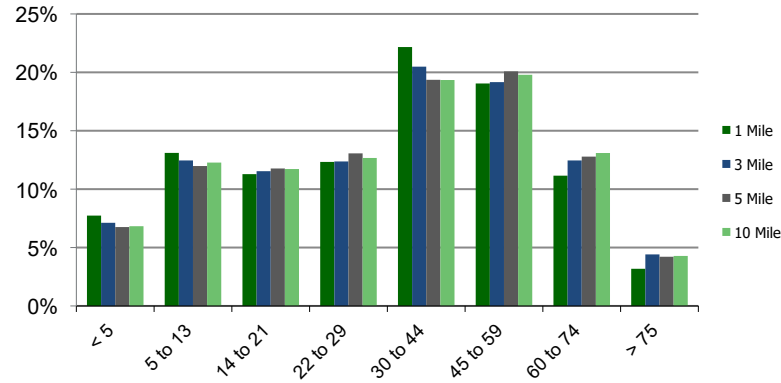
Daytime Population (3-Mile)



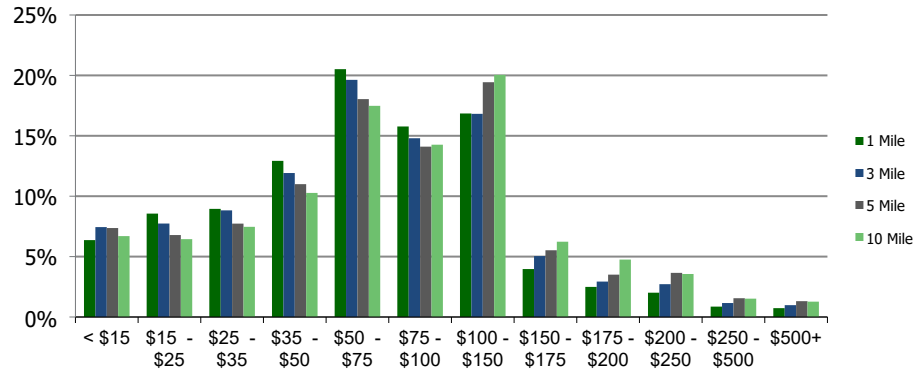
Ethnicity (3-Mile)

This report was produced using data from private and government sources deemed to be reliable and is herein provided without representation or warranty.

Population by Age Range



Household Income by Income Range (\$000)



105460-Corona Hills Plaza
Corona, CA

1.00 Mile
Radius

3.00 Mile
Radius

5.00 Mile
Radius

10.00 Mile
Radius

	1.00 Mile Radius	3.00 Mile Radius	5.00 Mile Radius	10.00 Mile Radius
Population	Current Estimated Population	25,594	110,366	292,654
	2010 Census Population	23,027	101,747	269,853
	2000 Census Population	21,330	87,683	228,065
	Historical Annual Growth 2000 to 2010	0.77%	1.50%	1.70%
	Estimated Annual Growth 2010 to 2019	1.09%	0.84%	0.84%
	Projected Annual Growth 2019 to 2024	1.52%	1.48%	1.48%
Households	Current Estimated Households	7,595	33,202	83,006
	2010 Census Households	6,714	30,478	76,338
	2000 Census Households	6,460	26,783	66,414
	Historical Annual Growth 2000 to 2010	0.4%	1.3%	1.4%
	Estimated Annual Growth 2010 to 2019	1.3%	0.9%	0.9%
	Projected Annual Growth 2019 to 2024	1.6%	1.5%	1.5%
	Population per Household	3.4	3.3	3.4
Ethnicity	White	51.0%	57.8%	60.6%
	Black or African American	8.3%	6.6%	5.6%
	Asian & Pacific Islander	12.7%	9.8%	8.0%
	Other Races	28.0%	25.9%	25.8%
	Hispanic or Latino Population	51.1%	51.0%	50.1%
	Non Hispanic or Latino Population	48.9%	49.0%	49.9%

This report was produced using data from private and government sources deemed to be reliable and is herein provided without representation or warranty.