

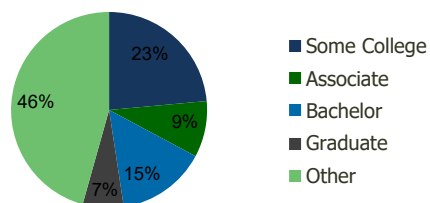
105460-Corona Hills Plaza Corona, CA	1.00 Mile Radius	3.00 Mile Radius	5.00 Mile Radius	10.00 Mile Radius
---	---------------------	---------------------	---------------------	----------------------

## Demographics (2020)

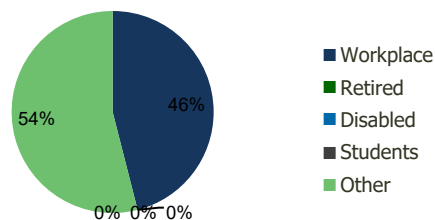
Current Population	25,908	110,853	294,685	667,045
Total Daytime Pop	23,181	123,605	288,409	670,896
Workplace Pop	9,324	56,883	109,217	210,099
Average Household Income	\$84,621	\$88,969	\$97,817	\$101,353
Median Household Income	\$68,986	\$71,010	\$78,616	\$81,701
Total Housing Units	7,668	33,174	83,380	190,326
Median Home Value	\$639,523	\$661,373	\$700,133	\$706,613
Bachelors Degree	15.9%	14.8%	14.7%	15.5%
Graduate Degree	6.7%	6.8%	7.0%	8.0%

## Projections (2025)

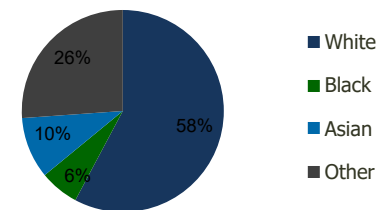
Projected Population	28,265	120,411	319,511	738,871
Projected 5 Year Pop Growth	1.8%	1.7%	1.6%	2.1%
Projected Households	8,394	36,058	90,532	210,762
Projected 5 Year Household Growth	1.8%	1.7%	1.7%	2.1%



Education (3-Mile)



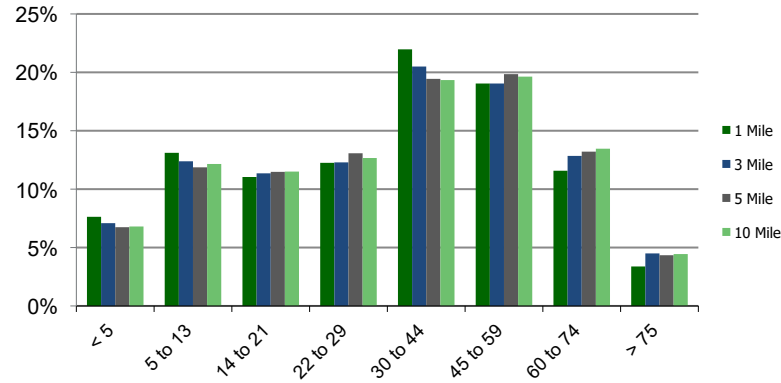
Daytime Population (3-Mile)



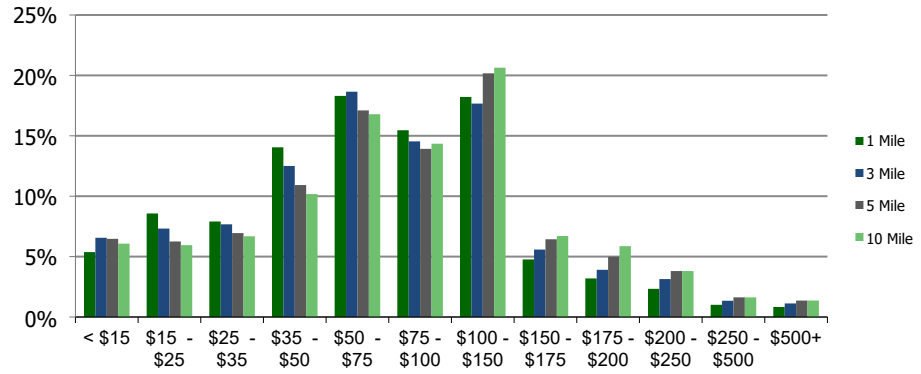
Ethnicity (3-Mile)

This report was produced using data from private and government sources deemed to be reliable and is herein provided without representation or warranty.

**Population by Age Range**



**Household Income by Income Range (\$000)**



<b>105460-Corona Hills Plaza</b> Corona, CA	<b>1.00 Mile Radius</b>	<b>3.00 Mile Radius</b>	<b>5.00 Mile Radius</b>	<b>10.00 Mile Radius</b>
--	-------------------------	-------------------------	-------------------------	--------------------------

<b>Population</b>	Current Estimated Population	25,908	110,853	294,685	667,045
	2010 Census Population	23,027	101,747	269,853	584,139
	2000 Census Population	21,330	87,683	228,065	446,998
	Historical Annual Growth 2000 to 2010	0.77%	1.50%	1.70%	2.71%
	Estimated Annual Growth 2010 to 2020	1.10%	0.80%	0.82%	1.24%
	Projected Annual Growth 2020 to 2025	1.76%	1.67%	1.63%	2.07%
<b>Households</b>	Current Estimated Households	7,668	33,174	83,380	190,326
	2010 Census Households	6,714	30,478	76,338	166,969
	2000 Census Households	6,460	26,783	66,414	133,977
	Historical Annual Growth 2000 to 2010	0.4%	1.3%	1.4%	2.2%
	Estimated Annual Growth 2010 to 2020	1.2%	0.8%	0.8%	1.2%
	Projected Annual Growth 2020 to 2025	1.8%	1.7%	1.7%	2.1%
	Population per Household	3.4	3.3	3.5	3.4
<b>Ethnicity</b>	White	50.7%	57.8%	60.4%	57.6%
	Black or African American	8.1%	6.3%	5.6%	5.7%
	Asian & Pacific Islander	12.9%	9.8%	8.2%	9.9%
	Other Races	28.3%	26.1%	25.8%	26.7%
	Hispanic or Latino Population	51.9%	51.9%	51.0%	49.9%
	Non Hispanic or Latino Population	48.1%	48.1%	49.0%	50.1%

This report was produced using data from private and government sources deemed to be reliable and is herein provided without representation or warranty.