

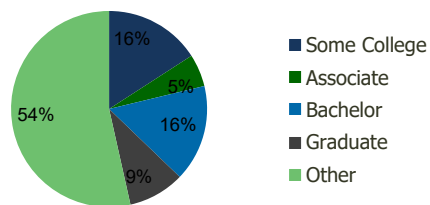
117290-Broadway Plaza Revere, MA	1.00 Mile Radius	3.00 Mile Radius	5.00 Mile Radius	10.00 Mile Radius
-------------------------------------	---------------------	---------------------	---------------------	----------------------

Demographics (2020)

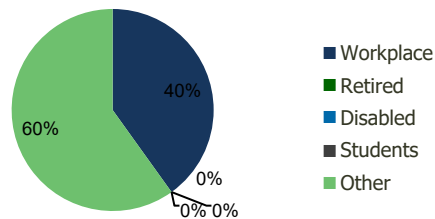
Current Population	40,466	237,081	530,340	1,677,459
Total Daytime Pop	29,012	201,931	734,647	2,291,564
Workplace Pop	8,788	80,953	439,964	1,132,412
Average Household Income	\$80,325	\$84,676	\$109,254	\$119,022
Median Household Income	\$60,979	\$65,408	\$78,972	\$85,052
Total Housing Units	15,123	88,981	218,921	687,832
Median Home Value	\$401,707	\$437,749	\$512,433	\$592,840
Bachelors Degree	12.5%	16.0%	22.1%	25.9%
Graduate Degree	7.2%	9.3%	17.9%	24.7%

Projections (2025)

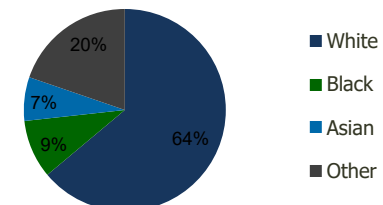
Projected Population	40,883	241,656	545,508	1,709,305
Projected 5 Year Pop Growth	0.2%	0.4%	0.6%	0.4%
Projected Households	15,279	90,743	226,324	702,836
Projected 5 Year Household Growth	0.2%	0.4%	0.7%	0.4%



Education (3-Mile)



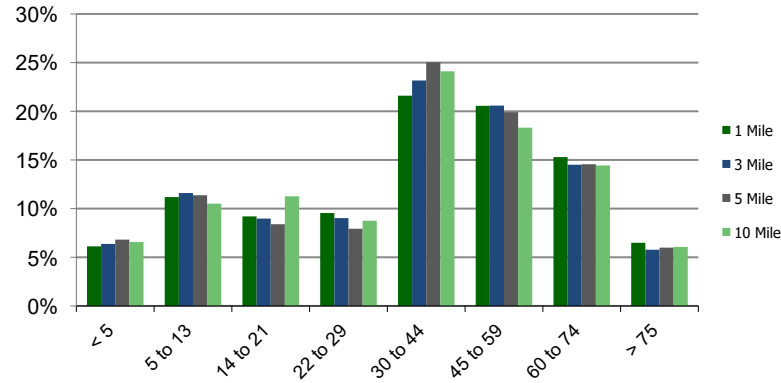
Daytime Population (3-Mile)



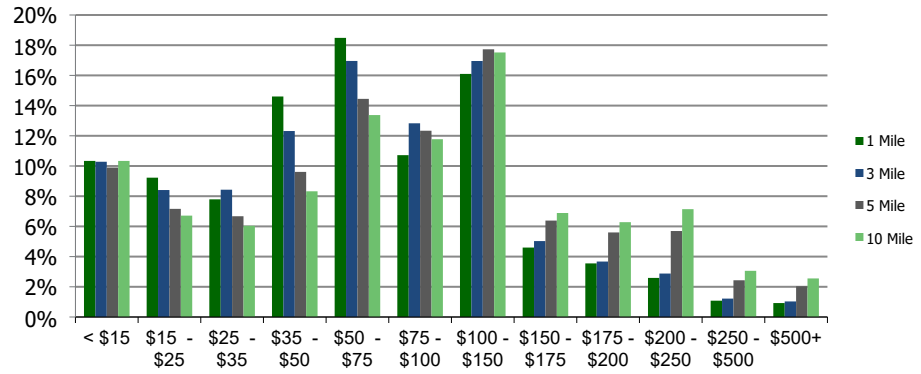
Ethnicity (3-Mile)

This report was produced using data from private and government sources deemed to be reliable and is herein provided without representation or warranty.

Population by Age Range



Household Income by Income Range (\$000)



117290-Broadway Plaza Revere, MA	1.00 Mile Radius	3.00 Mile Radius	5.00 Mile Radius	10.00 Mile Radius
--	------------------	------------------	------------------	-------------------

		1.00 Mile Radius	3.00 Mile Radius	5.00 Mile Radius	10.00 Mile Radius
Population	Current Estimated Population	40,466	237,081	530,340	1,677,459
	2010 Census Population	37,416	215,230	477,401	1,542,756
	2000 Census Population	34,723	202,895	453,550	1,492,576
	Historical Annual Growth 2000 to 2010	0.75%	0.59%	0.51%	0.33%
	Estimated Annual Growth 2010 to 2020	0.73%	0.90%	0.98%	0.78%
	Projected Annual Growth 2020 to 2025	0.21%	0.38%	0.57%	0.38%
Households	Current Estimated Households	15,123	88,981	218,921	687,832
	2010 Census Households	13,976	80,603	194,848	627,456
	2000 Census Households	13,496	78,604	185,983	607,385
	Historical Annual Growth 2000 to 2010	0.4%	0.3%	0.5%	0.3%
	Estimated Annual Growth 2010 to 2020	0.7%	0.9%	1.1%	0.9%
	Projected Annual Growth 2020 to 2025	0.2%	0.4%	0.7%	0.4%
	Population per Household	2.7	2.6	2.4	2.3
Ethnicity	White	70.4%	63.9%	68.0%	67.4%
	Black or African American	5.8%	9.3%	8.5%	11.9%
	Asian & Pacific Islander	5.3%	7.0%	9.3%	10.2%
	Other Races	18.5%	19.7%	14.2%	10.6%
	Hispanic or Latino Population	35.4%	33.4%	22.7%	15.2%
	Non Hispanic or Latino Population	64.6%	66.6%	77.3%	84.8%

This report was produced using data from private and government sources deemed to be reliable and is herein provided without representation or warranty.