

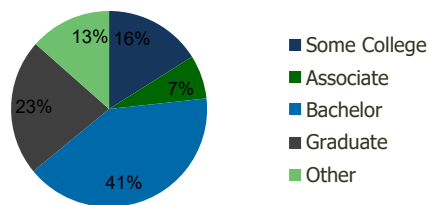
1671-Brennan Station Raleigh, NC	1.00 Mile Radius	3.00 Mile Radius	5.00 Mile Radius	10.00 Mile Radius
-------------------------------------	---------------------	---------------------	---------------------	----------------------

Demographics (2017)

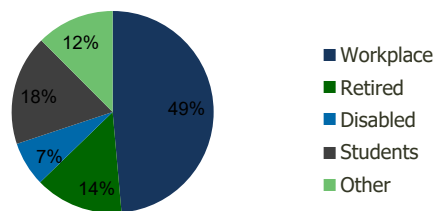
Current Population	7,907	68,746	156,755	537,499
Total Daytime Pop	7,228	61,486	162,954	732,389
Workplace Pop	4,017	29,880	89,693	413,516
Average Household Income	\$100,830	\$104,637	\$105,301	\$94,336
Median Household Income	\$82,555	\$77,976	\$78,290	\$67,765
Total Housing Units	3,535	30,514	68,889	218,826
Median Home Value	\$377,022	\$357,743	\$349,035	\$299,475
Bachelors Degree	38.7%	40.8%	39.8%	33.9%
Graduate Degree	23.2%	22.5%	22.2%	19.2%

Projections (2022)

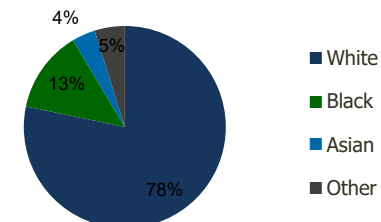
Projected Population	8,056	70,453	161,904	576,395
Projected 5 Year Pop Growth	0.4%	0.5%	0.6%	1.4%
Projected Households	3,602	31,274	71,294	235,222
Projected 5 Year Household Growth	0.4%	0.5%	0.7%	1.5%



Education (3-Mile)



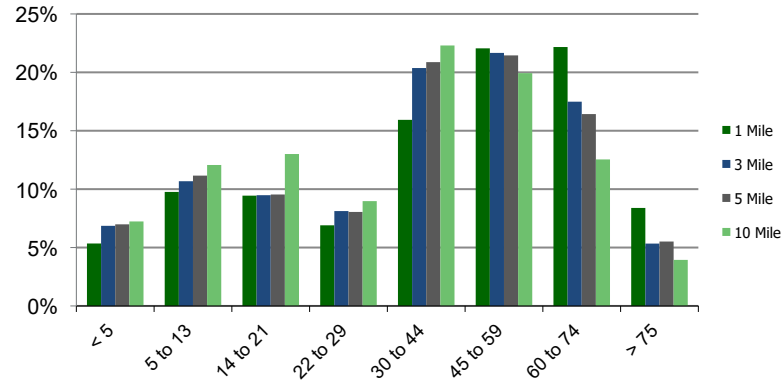
Daytime Population (3-Mile)



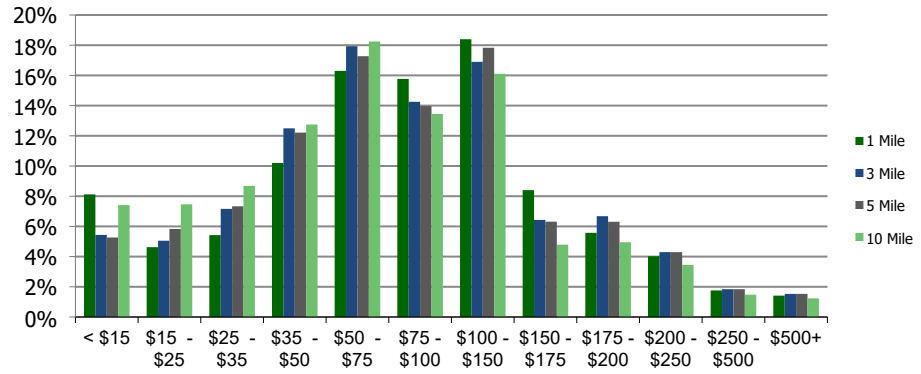
Ethnicity (3-Mile)

This report was produced using data from private and government sources deemed to be reliable and is herein provided without representation or warranty.

Population by Age Range



Household Income by Income Range (\$000)



1671-Brennan Station Raleigh, NC	1.00 Mile Radius	3.00 Mile Radius	5.00 Mile Radius	10.00 Mile Radius
--	-------------------------	-------------------------	-------------------------	--------------------------

Population	Current Estimated Population	7,907	68,746	156,755	537,499
	2010 Census Population	7,408	63,032	142,638	462,639
	2000 Census Population	7,436	55,275	121,581	344,702
	Historical Annual Growth 2000 to 2010	-0.04%	1.32%	1.61%	2.99%
	Estimated Annual Growth 2010 to 2012	0.84%	1.13%	1.23%	1.95%
	Projected Annual Growth 2012 to 2017	0.37%	0.49%	0.65%	1.41%
Households	Current Estimated Households	3,535	30,514	68,889	218,826
	2010 Census Households	3,305	27,975	62,337	186,874
	2000 Census Households	3,076	23,259	50,568	138,486
	Historical Annual Growth 2000 to 2010	0.7%	1.9%	2.1%	3.0%
	Estimated Annual Growth 2010 to 2012	0.9%	1.1%	1.3%	2.1%
	Projected Annual Growth 2012 to 2017	0.4%	0.5%	0.7%	1.5%
	Population per Household	2.2	2.2	2.3	2.4
Ethnicity	White	88.8%	78.3%	78.5%	65.1%
	Black or African American	5.8%	13.2%	12.6%	22.0%
	Asian & Pacific Islander	2.7%	3.7%	3.7%	5.5%
	Other Races	2.8%	4.8%	5.3%	7.4%
	Hispanic or Latino Population	3.0%	5.9%	6.5%	9.9%
	Non Hispanic or Latino Population	97.0%	94.1%	93.5%	90.1%

This report was produced using data from private and government sources deemed to be reliable and is herein provided without representation or warranty.