

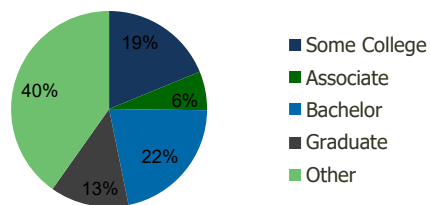
1664-Garden State Pavilions Cherry Hill, NJ	1.00 Mile Radius	3.00 Mile Radius	5.00 Mile Radius	10.00 Mile Radius
--	---------------------	---------------------	---------------------	----------------------

Demographics (2017)

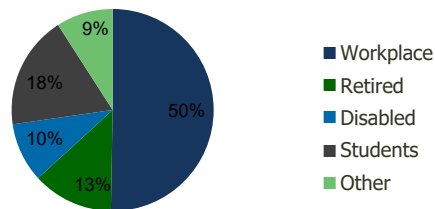
Current Population	9,068	148,793	309,380	1,788,220
Total Daytime Pop	17,095	154,263	359,936	2,192,126
Workplace Pop	12,004	77,558	183,002	983,668
Average Household Income	\$100,327	\$87,668	\$81,656	\$71,545
Median Household Income	\$84,255	\$65,992	\$60,226	\$48,856
Total Housing Units	3,660	56,456	115,753	691,858
Median Home Value	\$279,750	\$232,531	\$222,324	\$186,569
Bachelors Degree	26.9%	21.6%	19.4%	17.4%
Graduate Degree	17.7%	13.0%	11.6%	11.1%

Projections (2022)

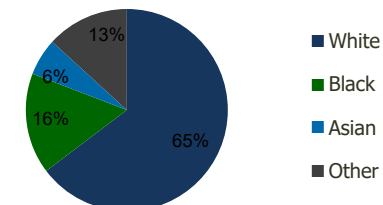
Projected Population	9,504	151,914	314,025	1,848,161
Projected 5 Year Pop Growth	0.9%	0.4%	0.3%	0.7%
Projected Households	3,851	57,704	117,559	718,076
Projected 5 Year Household Growth	1.0%	0.4%	0.3%	0.7%



Education (3-Mile)



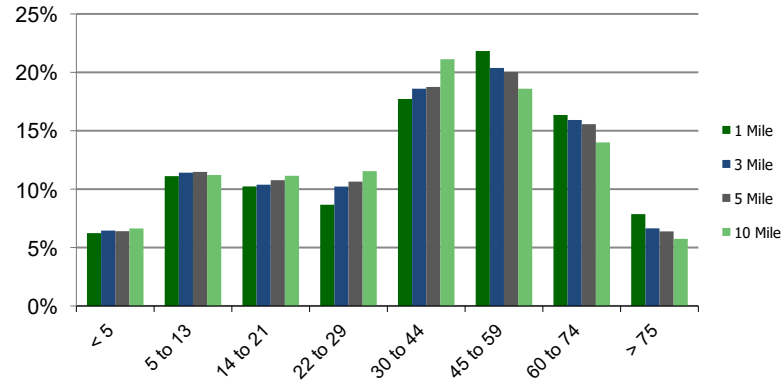
Daytime Population (3-Mile)



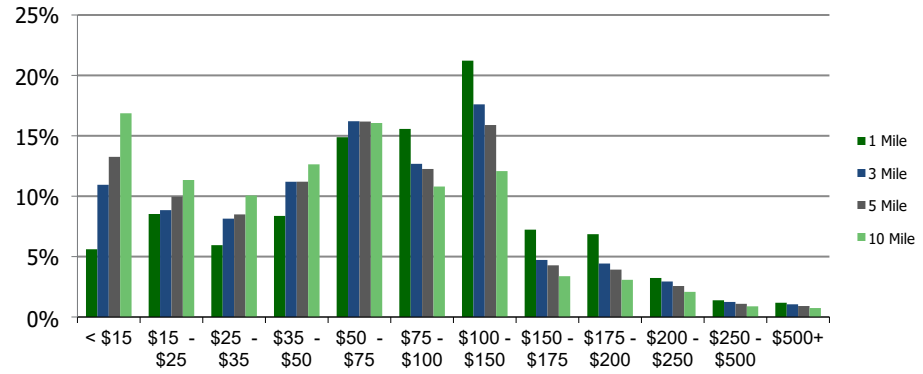
Ethnicity (3-Mile)

This report was produced using data from private and government sources deemed to be reliable and is herein provided without representation or warranty.

Population by Age Range



Household Income by Income Range (\$000)



1664-Garden State Pavilions
Cherry Hill, NJ

1.00 Mile
Radius

3.00 Mile
Radius

5.00 Mile
Radius

10.00 Mile
Radius

	1.00 Mile Radius	3.00 Mile Radius	5.00 Mile Radius	10.00 Mile Radius
Population				
Current Estimated Population	9,068	148,793	309,380	1,788,220
2010 Census Population	8,456	146,870	308,853	1,733,930
2000 Census Population	8,082	145,503	310,308	1,693,974
Historical Annual Growth 2000 to 2010	0.45%	0.09%	-0.05%	0.23%
Estimated Annual Growth 2010 to 2012	0.91%	0.17%	0.02%	0.40%
Projected Annual Growth 2012 to 2017	0.94%	0.42%	0.30%	0.66%
Households				
Current Estimated Households	3,660	56,456	115,753	691,858
2010 Census Households	3,378	55,805	115,713	667,140
2000 Census Households	3,127	54,883	114,419	648,243
Historical Annual Growth 2000 to 2010	0.8%	0.2%	0.1%	0.3%
Estimated Annual Growth 2010 to 2012	1.0%	0.1%	0.0%	0.5%
Projected Annual Growth 2012 to 2017	1.0%	0.4%	0.3%	0.7%
Population per Household	2.5	2.6	2.6	2.5
Ethnicity				
White	83.5%	64.7%	62.2%	52.6%
Black or African American	5.2%	16.1%	19.5%	30.2%
Asian & Pacific Islander	6.2%	5.9%	5.0%	6.8%
Other Races	5.1%	13.2%	13.3%	10.4%
Hispanic or Latino Population	7.5%	19.1%	19.3%	14.7%
Non Hispanic or Latino Population	92.5%	80.9%	80.7%	85.3%

This report was produced using data from private and government sources deemed to be reliable and is herein provided without representation or warranty.