

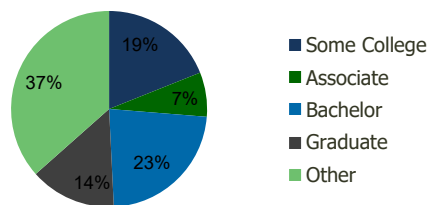
110140-Hillview S.C. Cherry Hill, NJ	1.00 Mile Radius	3.00 Mile Radius	5.00 Mile Radius	10.00 Mile Radius
---	---------------------	---------------------	---------------------	----------------------

Demographics (2020)

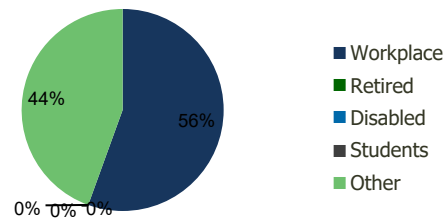
Current Population	10,735	121,005	289,322	1,750,743
Total Daytime Pop	20,656	141,304	351,531	2,168,137
Workplace Pop	14,271	78,473	190,716	990,373
Average Household Income	\$105,872	\$100,262	\$98,960	\$83,972
Median Household Income	\$75,525	\$78,474	\$72,682	\$57,550
Total Housing Units	4,238	47,129	108,562	679,582
Median Home Value	\$277,338	\$256,083	\$261,953	\$210,573
Bachelors Degree	21.5%	23.0%	21.8%	18.8%
Graduate Degree	13.8%	14.2%	14.0%	12.5%

Projections (2025)

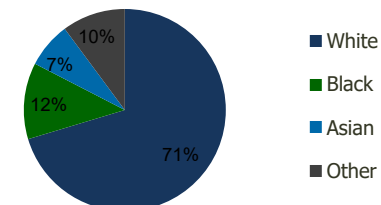
Projected Population	11,310	123,730	294,262	1,807,899
Projected 5 Year Pop Growth	1.0%	0.4%	0.3%	0.6%
Projected Households	4,470	48,204	110,480	705,205
Projected 5 Year Household Growth	1.1%	0.5%	0.4%	0.7%



Education (3-Mile)



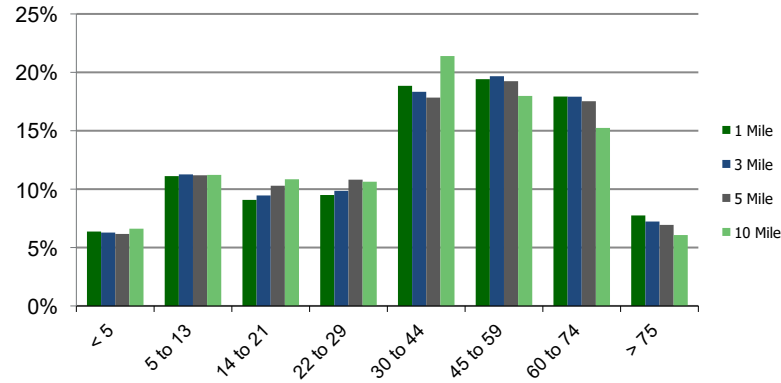
Daytime Population (3-Mile)



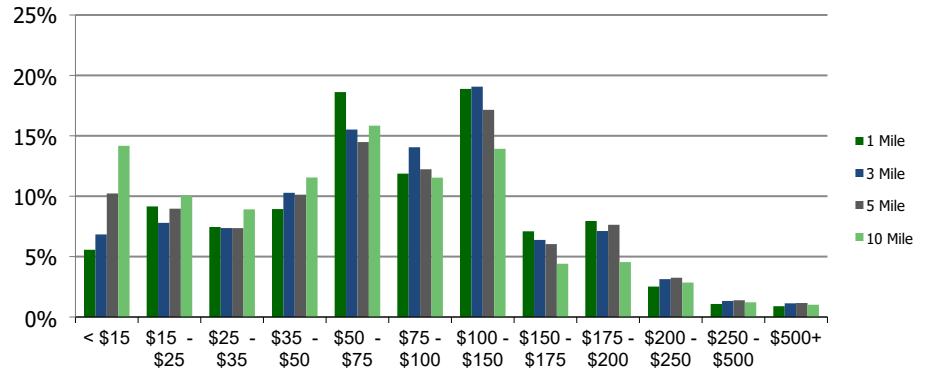
Ethnicity (3-Mile)

This report was produced using data from private and government sources deemed to be reliable and is herein provided without representation or warranty.

Population by Age Range



Household Income by Income Range (\$000)



110140-Hillview S.C.
Cherry Hill, NJ

1.00 Mile
Radius

3.00 Mile
Radius

5.00 Mile
Radius

10.00 Mile
Radius

	1.00 Mile Radius	3.00 Mile Radius	5.00 Mile Radius	10.00 Mile Radius
Population				
Current Estimated Population	10,735	121,005	289,322	1,750,743
2010 Census Population	10,190	121,848	292,892	1,690,433
2000 Census Population	9,271	120,145	292,627	1,647,297
Historical Annual Growth 2000 to 2010	0.95%	0.14%	0.01%	0.26%
Estimated Annual Growth 2010 to 2020	0.49%	-0.06%	-0.11%	0.33%
Projected Annual Growth 2020 to 2025	1.05%	0.45%	0.34%	0.64%
Households				
Current Estimated Households	4,238	47,129	108,562	679,582
2010 Census Households	4,021	47,748	110,114	650,445
2000 Census Households	3,481	46,935	108,889	631,102
Historical Annual Growth 2000 to 2010	1.5%	0.2%	0.1%	0.3%
Estimated Annual Growth 2010 to 2020	0.5%	-0.1%	-0.1%	0.4%
Projected Annual Growth 2020 to 2025	1.1%	0.5%	0.4%	0.7%
Population per Household	2.5	2.5	2.6	2.5
Ethnicity				
White	71.8%	70.3%	64.6%	54.3%
Black or African American	7.4%	12.2%	17.8%	27.5%
Asian & Pacific Islander	13.1%	7.3%	5.2%	7.3%
Other Races	7.7%	10.1%	12.4%	11.0%
Hispanic or Latino Population	9.6%	15.7%	18.6%	16.0%
Non Hispanic or Latino Population	90.4%	84.3%	81.4%	84.0%

This report was produced using data from private and government sources deemed to be reliable and is herein provided without representation or warranty.