

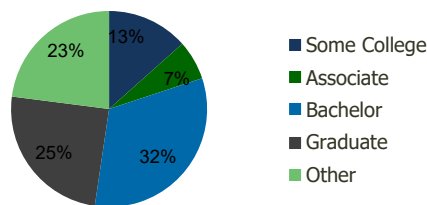
106430-Marlton Plaza Cherry Hill, NJ	1.00 Mile Radius	3.00 Mile Radius	5.00 Mile Radius	10.00 Mile Radius
---	---------------------	---------------------	---------------------	----------------------

## Demographics (2020)

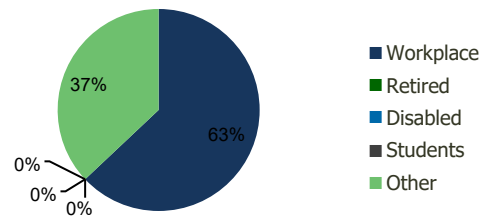
Current Population	9,124	77,797	197,686	726,698
Total Daytime Pop	12,704	106,654	269,712	803,659
Workplace Pop	7,268	67,163	161,755	379,136
Average Household Income	\$137,535	\$139,995	\$129,834	\$104,235
Median Household Income	\$123,829	\$110,011	\$99,320	\$77,760
Total Housing Units	3,281	29,020	77,263	274,968
Median Home Value	\$369,014	\$364,696	\$345,161	\$262,497
Bachelors Degree	34.8%	32.4%	30.2%	22.7%
Graduate Degree	25.6%	24.7%	22.1%	14.0%

## Projections (2025)

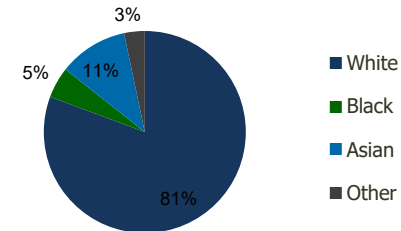
Projected Population	9,362	79,859	202,876	740,356
Projected 5 Year Pop Growth	0.5%	0.5%	0.5%	0.4%
Projected Households	3,367	29,785	79,308	280,327
Projected 5 Year Household Growth	0.5%	0.5%	0.5%	0.4%



Education (3-Mile)



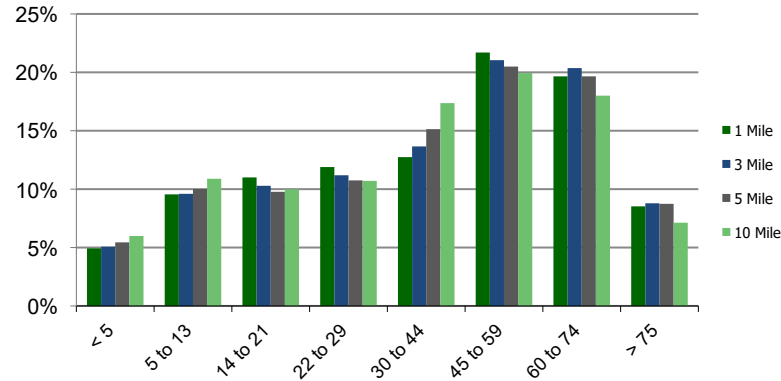
Daytime Population (3-Mile)



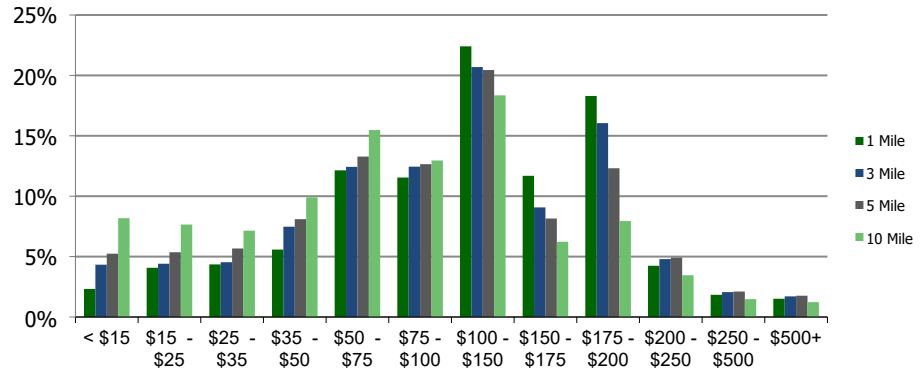
Ethnicity (3-Mile)

This report was produced using data from private and government sources deemed to be reliable and is herein provided without representation or warranty.

**Population by Age Range**



**Household Income by Income Range (\$000)**



**106430-Marlton Plaza**  
Cherry Hill, NJ

1.00 Mile  
Radius

3.00 Mile  
Radius

5.00 Mile  
Radius

10.00 Mile  
Radius

	1.00 Mile Radius	3.00 Mile Radius	5.00 Mile Radius	10.00 Mile Radius
<b>Population</b>	Current Estimated Population	9,124	77,797	197,686
	2010 Census Population	8,902	78,186	197,984
	2000 Census Population	8,815	78,905	193,298
	Historical Annual Growth 2000 to 2010	0.10%	-0.09%	0.24%
	Estimated Annual Growth 2010 to 2020	0.23%	-0.05%	-0.01%
	Projected Annual Growth 2020 to 2025	0.52%	0.52%	0.52%
<b>Households</b>	Current Estimated Households	3,281	29,020	77,263
	2010 Census Households	3,201	29,385	77,762
	2000 Census Households	3,012	29,042	74,532
	Historical Annual Growth 2000 to 2010	0.6%	0.1%	0.4%
	Estimated Annual Growth 2010 to 2020	0.2%	-0.1%	-0.1%
	Projected Annual Growth 2020 to 2025	0.5%	0.5%	0.5%
	Population per Household	2.8	2.6	2.5
<b>Ethnicity</b>	White	80.8%	80.7%	78.2%
	Black or African American	3.8%	5.0%	8.0%
	Asian & Pacific Islander	12.1%	11.1%	9.7%
	Other Races	3.3%	3.3%	4.1%
	Hispanic or Latino Population	4.0%	4.2%	5.1%
	Non Hispanic or Latino Population	96.0%	95.8%	94.9%

This report was produced using data from private and government sources deemed to be reliable and is herein provided without representation or warranty.