

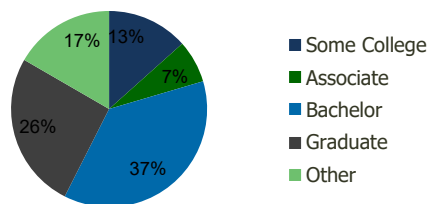
109590-Park Place S.C. Morrisville, NC	1.00 Mile Radius	3.00 Mile Radius	5.00 Mile Radius	10.00 Mile Radius
---	---------------------	---------------------	---------------------	----------------------

Demographics (2019)

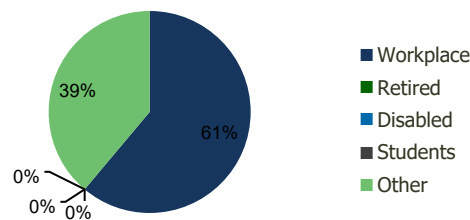
Current Population	9,597	88,705	174,866	561,122
Total Daytime Pop	20,647	110,587	229,729	715,960
Workplace Pop	15,596	67,593	133,743	376,570
Average Household Income	\$126,452	\$116,137	\$117,121	\$114,183
Median Household Income	\$99,443	\$94,060	\$95,178	\$87,287
Total Housing Units	3,846	35,395	68,539	227,576
Median Home Value	\$474,499	\$388,172	\$391,888	\$396,485
Bachelors Degree	37.2%	37.0%	36.7%	37.1%
Graduate Degree	29.0%	25.9%	26.4%	25.5%

Projections (2023)

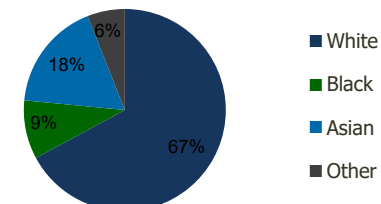
Projected Population	10,564	97,189	194,450	615,737
Projected 5 Year Pop Growth	1.9%	1.8%	2.1%	1.9%
Projected Households	4,251	38,690	76,016	249,415
Projected 5 Year Household Growth	2.0%	1.8%	2.1%	1.8%



Education (3-Mile)



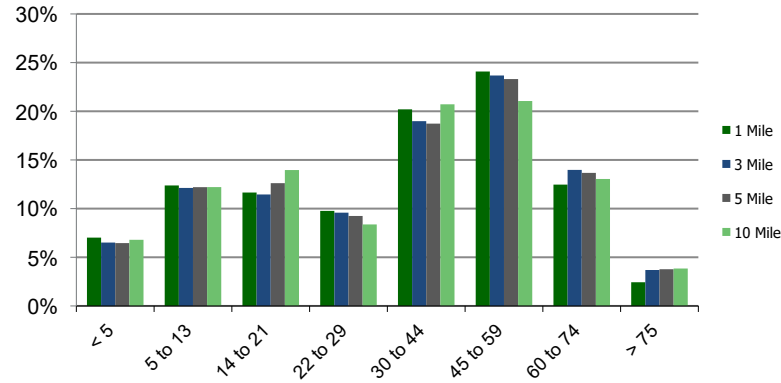
Daytime Population (3-Mile)



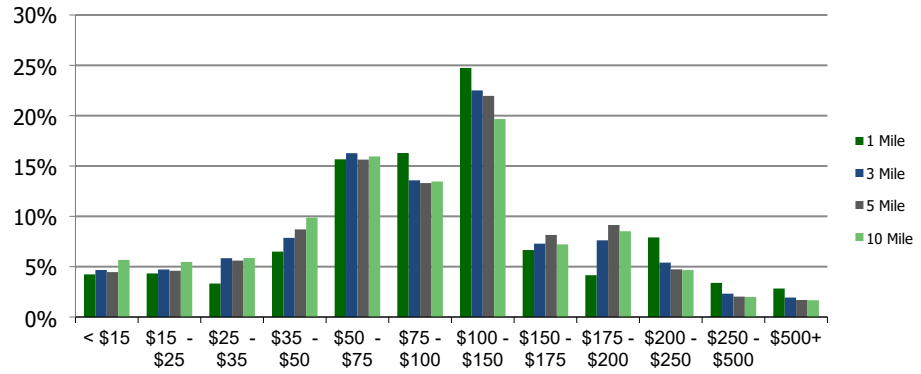
Ethnicity (3-Mile)

This report was produced using data from private and government sources deemed to be reliable and is herein provided without representation or warranty.

Population by Age Range



Household Income by Income Range (\$000)



109590-Park Place S.C. Morrisville, NC	1.00 Mile Radius	3.00 Mile Radius	5.00 Mile Radius	10.00 Mile Radius
---	---------------------	---------------------	---------------------	----------------------

Population	Current Estimated Population	9,597	88,705	174,866	561,122
	2010 Census Population	7,618	71,638	138,046	448,800
	2000 Census Population	4,447	55,011	103,419	318,037
	Historical Annual Growth 2000 to 2010	5.53%	2.68%	2.93%	3.50%
	Estimated Annual Growth 2010 to 2012	2.40%	2.22%	2.45%	2.32%
	Projected Annual Growth 2012 to 2019	1.94%	1.84%	2.15%	1.87%
Households	Current Estimated Households	3,846	35,395	68,539	227,576
	2010 Census Households	3,030	28,684	54,164	181,484
	2000 Census Households	1,807	21,662	39,491	126,318
	Historical Annual Growth 2000 to 2010	5.3%	2.8%	3.2%	3.7%
	Estimated Annual Growth 2010 to 2012	2.5%	2.2%	2.4%	2.3%
	Projected Annual Growth 2012 to 2019	2.0%	1.8%	2.1%	1.8%
	Population per Household	2.5	2.5	2.5	2.4
Ethnicity	White	64.0%	67.1%	67.9%	70.3%
	Black or African American	10.7%	9.4%	9.5%	13.5%
	Asian & Pacific Islander	20.3%	17.5%	16.4%	10.3%
	Other Races	4.9%	6.0%	6.1%	5.8%
	Hispanic or Latino Population	5.6%	7.6%	7.9%	7.1%
	Non Hispanic or Latino Population	94.4%	92.4%	92.1%	92.9%

This report was produced using data from private and government sources deemed to be reliable and is herein provided without representation or warranty.