

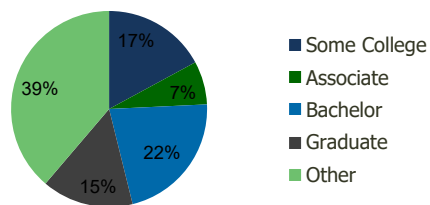
105731-Bridgewater Promenade Bridgewater, NJ	1.00 Mile Radius	3.00 Mile Radius	5.00 Mile Radius	10.00 Mile Radius
---	---------------------	---------------------	---------------------	----------------------

Demographics (2021)

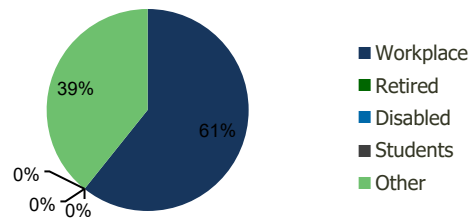
Current Population	9,394	63,514	152,471	675,955
Total Daytime Pop	10,326	86,786	202,931	855,563
Workplace Pop	6,069	52,716	122,395	424,015
Average Household Income	\$95,111	\$116,859	\$126,880	\$130,119
Median Household Income	\$74,612	\$87,832	\$95,901	\$99,453
Total Housing Units	3,258	23,931	57,094	232,362
Median Home Value	\$384,683	\$461,799	\$481,479	\$511,178
Bachelors Degree	13.9%	21.9%	25.4%	26.5%
Graduate Degree	6.1%	15.1%	18.8%	20.8%

Projections (2026)

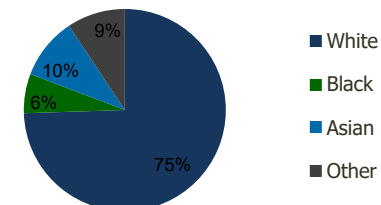
Projected Population	9,803	65,473	157,341	689,729
Projected 5 Year Pop Growth	0.9%	0.6%	0.6%	0.4%
Projected Households	3,402	24,710	59,009	237,335
Projected 5 Year Household Growth	0.9%	0.6%	0.7%	0.4%



Education (3-Mile)



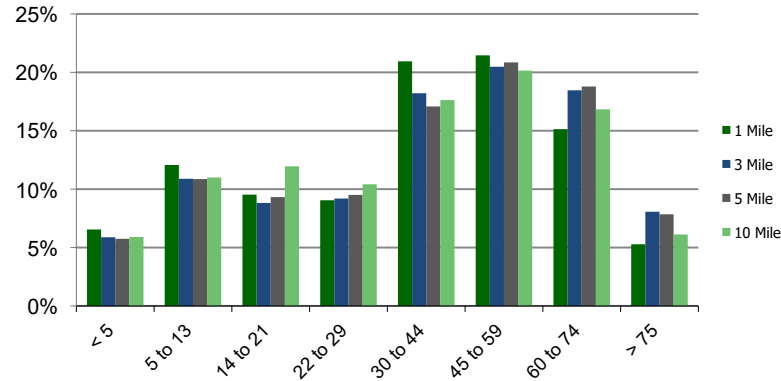
Daytime Population (3-Mile)



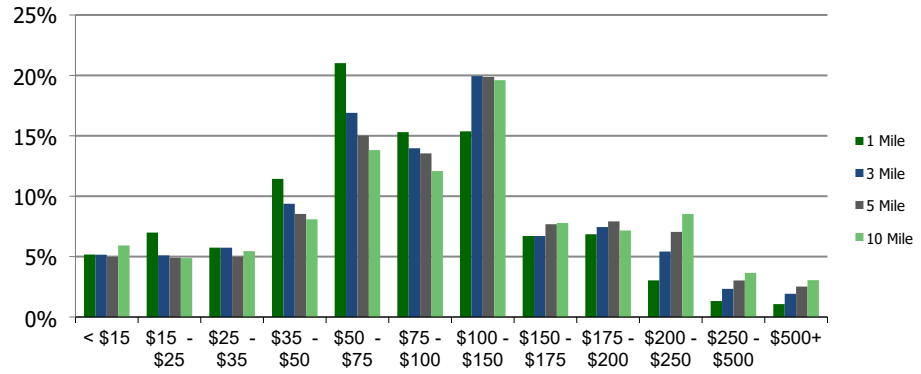
Ethnicity (3-Mile)

This report was produced using data from private and government sources deemed to be reliable and is herein provided without representation or warranty.

Population by Age Range



Household Income by Income Range (\$000)



105731-Bridgewater Promenade Bridgewater, NJ	1.00 Mile Radius	3.00 Mile Radius	5.00 Mile Radius	10.00 Mile Radius
--	-------------------------	-------------------------	-------------------------	--------------------------

Population	Current Estimated Population	9,394	63,514	152,471	675,955
	2010 Census Population	8,646	58,627	140,776	640,714
	2000 Census Population	8,519	55,835	131,005	598,838
	Historical Annual Growth 2000 to 2010	0.15%	0.49%	0.72%	0.68%
	Estimated Annual Growth 2010 to 2020	0.71%	0.68%	0.68%	0.46%
	Projected Annual Growth 2020 to 2025	0.85%	0.61%	0.63%	0.40%
Households	Current Estimated Households	3,258	23,931	57,094	232,362
	2010 Census Households	3,001	21,988	52,527	219,529
	2000 Census Households	3,010	20,596	48,711	209,450
	Historical Annual Growth 2000 to 2010	0.0%	0.7%	0.8%	0.5%
	Estimated Annual Growth 2010 to 2020	0.7%	0.7%	0.7%	0.5%
	Projected Annual Growth 2020 to 2025	0.9%	0.6%	0.7%	0.4%
	Population per Household	2.9	2.6	2.6	2.8
Ethnicity	White	73.5%	74.5%	67.2%	57.3%
	Black or African American	4.2%	6.3%	9.5%	14.3%
	Asian & Pacific Islander	5.4%	9.9%	15.3%	18.2%
	Other Races	16.9%	9.3%	8.1%	10.3%
	Hispanic or Latino Population	45.4%	22.1%	16.9%	19.3%
	Non Hispanic or Latino Population	54.6%	77.9%	83.1%	80.7%

This report was produced using data from private and government sources deemed to be reliable and is herein provided without representation or warranty.