

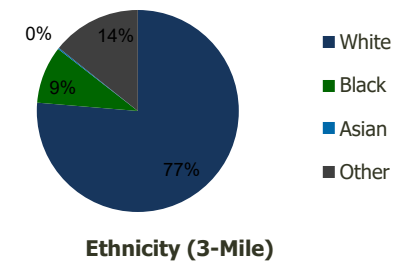
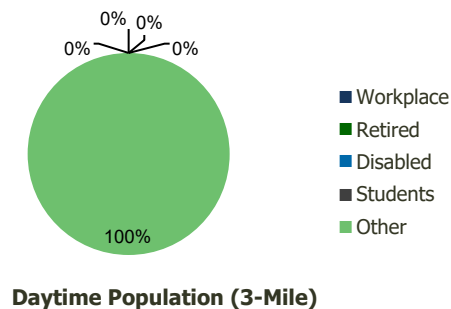
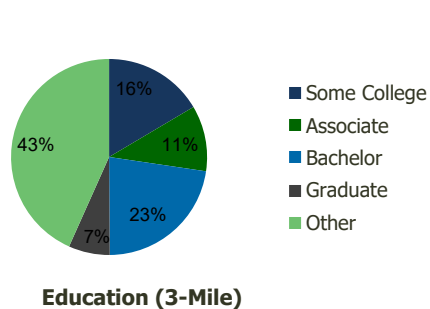
113690-Rexville Town Center Bayamon, PR	1.00 Mile Radius	3.00 Mile Radius	5.00 Mile Radius	10.00 Mile Radius
--	---------------------	---------------------	---------------------	----------------------

Demographics (2019)

Current Population	22,176	152,737	289,234	733,010
Total Daytime Pop	0	0	0	0
Workplace Pop	0	0	0	0
Average Household Income	\$38,959	\$37,804	\$40,843	\$43,254
Median Household Income	\$29,009	\$27,754	\$28,162	\$26,567
Total Housing Units	7,934	54,774	104,432	274,753
Median Home Value	\$115,798	\$114,833	\$117,205	\$120,886
Bachelors Degree	23.0%	22.6%	22.2%	21.3%
Graduate Degree	6.1%	6.8%	8.5%	10.6%

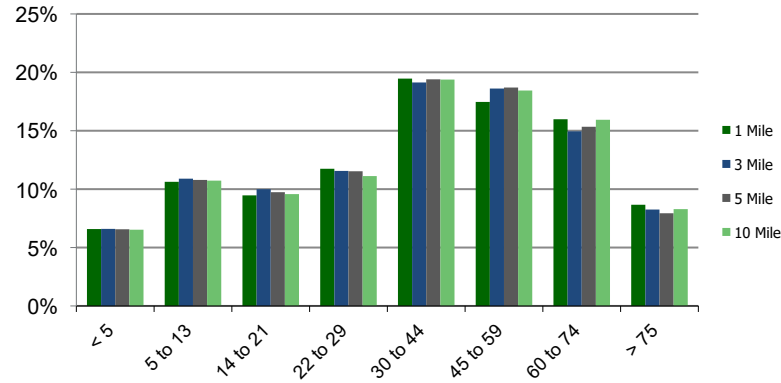
Projections (2024)

Projected Population	20,607	146,643	280,074	716,067
Projected 5 Year Pop Growth	-1.5%	-0.8%	-0.6%	-0.5%
Projected Households	7,362	52,474	100,904	267,467
Projected 5 Year Household Growth	-1.5%	-0.9%	-0.7%	-0.5%

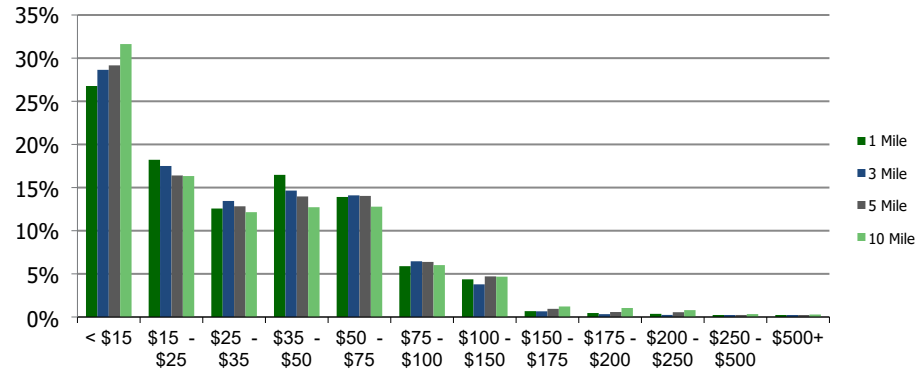


This report was produced using data from private and government sources deemed to be reliable and is herein provided without representation or warranty.

Population by Age Range



Household Income by Income Range (\$000)



113690-Rexville Town Center Bayamon, PR	1.00 Mile Radius	3.00 Mile Radius	5.00 Mile Radius	10.00 Mile Radius
--	---------------------	---------------------	---------------------	----------------------

Population	Current Estimated Population	22,176	152,737	289,234	733,010
	2010 Census Population	27,061	182,161	343,790	868,677
	2000 Census Population	29,680	184,906	350,415	899,329
	Historical Annual Growth 2000 to 2010	-0.92%	-0.15%	-0.19%	-0.35%
	Estimated Annual Growth 2010 to 2019	-2.02%	-1.79%	-1.76%	-1.73%
	Projected Annual Growth 2019 to 2024	-1.46%	-0.81%	-0.64%	-0.47%
Households	Current Estimated Households	7,934	54,774	104,432	274,753
	2010 Census Households	9,712	65,684	124,559	326,893
	2000 Census Households	9,220	60,097	113,751	305,397
	Historical Annual Growth 2000 to 2010	0.5%	0.9%	0.9%	0.7%
	Estimated Annual Growth 2010 to 2019	-2.1%	-1.8%	-1.8%	-1.8%
	Projected Annual Growth 2019 to 2024	-1.5%	-0.9%	-0.7%	-0.5%
	Population per Household	2.8	2.8	2.7	2.6
Ethnicity	White	76.9%	76.3%	75.7%	74.6%
	Black or African American	8.5%	9.2%	9.8%	11.4%
	Asian & Pacific Islander	0.2%	0.2%	0.2%	0.2%
	Other Races	14.4%	14.3%	14.3%	13.7%
	Hispanic or Latino Population	99.1%	99.2%	99.0%	98.7%
	Non Hispanic or Latino Population	0.9%	0.8%	1.0%	1.3%

This report was produced using data from private and government sources deemed to be reliable and is herein provided without representation or warranty.