

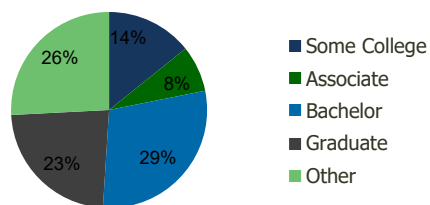
117360-Washington St. S.C. Woburn, MA	1.00 Mile Radius	3.00 Mile Radius	5.00 Mile Radius	10.00 Mile Radius
--	---------------------	---------------------	---------------------	----------------------

Demographics (2020)

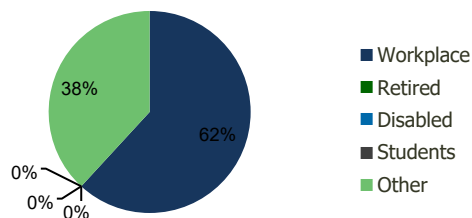
Current Population	7,434	97,668	212,683	1,160,174
Total Daytime Pop	24,577	130,011	260,025	1,347,577
Workplace Pop	20,950	80,402	149,156	646,128
Average Household Income	\$136,265	\$126,803	\$140,315	\$125,135
Median Household Income	\$111,223	\$103,456	\$111,464	\$94,729
Total Housing Units	2,756	39,197	83,044	458,381
Median Home Value	\$633,911	\$608,555	\$642,802	\$608,825
Bachelors Degree	31.3%	29.2%	29.8%	25.2%
Graduate Degree	25.5%	23.2%	24.9%	24.8%

Projections (2025)

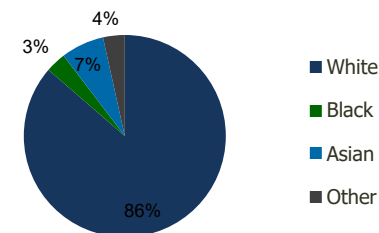
Projected Population	7,489	98,834	214,957	1,175,516
Projected 5 Year Pop Growth	0.1%	0.2%	0.2%	0.3%
Projected Households	2,774	39,678	83,981	464,952
Projected 5 Year Household Growth	0.1%	0.2%	0.2%	0.3%



Education (3-Mile)



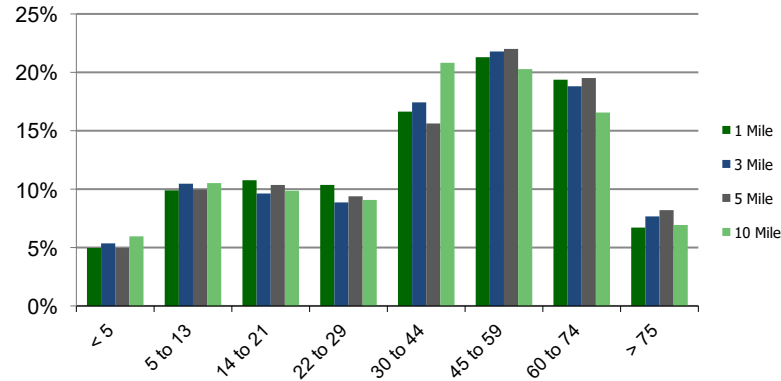
Daytime Population (3-Mile)



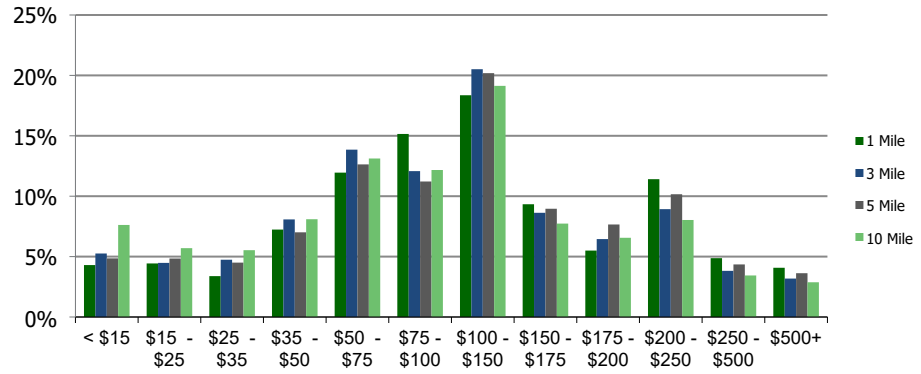
Ethnicity (3-Mile)

This report was produced using data from private and government sources deemed to be reliable and is herein provided without representation or warranty.

Population by Age Range



Household Income by Income Range (\$000)



117360-Washington St. S.C. Woburn, MA	1.00 Mile Radius	3.00 Mile Radius	5.00 Mile Radius	10.00 Mile Radius
---	------------------	------------------	------------------	-------------------

		1.00 Mile Radius	3.00 Mile Radius	5.00 Mile Radius	10.00 Mile Radius
Population	Current Estimated Population	7,434	97,668	212,683	1,160,174
	2010 Census Population	7,166	91,121	199,467	1,081,891
	2000 Census Population	6,460	88,884	195,763	1,048,330
	Historical Annual Growth 2000 to 2010	1.04%	0.25%	0.19%	0.32%
	Estimated Annual Growth 2010 to 2020	0.34%	0.65%	0.60%	0.65%
	Projected Annual Growth 2020 to 2025	0.15%	0.24%	0.21%	0.26%
Households	Current Estimated Households	2,756	39,197	83,044	458,381
	2010 Census Households	2,680	36,539	77,793	425,750
	2000 Census Households	2,262	35,035	75,076	409,828
	Historical Annual Growth 2000 to 2010	1.7%	0.4%	0.4%	0.4%
	Estimated Annual Growth 2010 to 2020	0.3%	0.7%	0.6%	0.7%
	Projected Annual Growth 2020 to 2025	0.1%	0.2%	0.2%	0.3%
	Population per Household	2.7	2.5	2.5	2.5
Ethnicity	White	89.9%	86.4%	87.4%	75.5%
	Black or African American	2.3%	3.3%	2.6%	6.4%
	Asian & Pacific Islander	4.8%	6.9%	6.9%	9.3%
	Other Races	3.0%	3.5%	3.1%	8.9%
	Hispanic or Latino Population	3.4%	3.8%	2.9%	12.5%
	Non Hispanic or Latino Population	96.6%	96.2%	97.1%	87.5%

This report was produced using data from private and government sources deemed to be reliable and is herein provided without representation or warranty.