

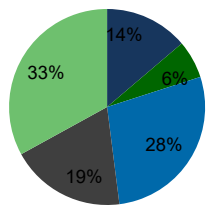
117300-Adams Plaza Quincy, MA	1.00 Mile Radius	3.00 Mile Radius	5.00 Mile Radius	10.00 Mile Radius
----------------------------------	---------------------	---------------------	---------------------	----------------------

Demographics (2021)

Current Population	26,777	140,833	362,793	1,347,704
Total Daytime Pop	18,713	152,206	335,944	1,966,909
Workplace Pop	9,591	80,167	134,811	1,024,404
Average Household Income	\$107,796	\$110,395	\$100,277	\$124,409
Median Household Income	\$86,681	\$87,230	\$76,852	\$88,415
Total Housing Units	11,426	59,971	140,574	549,762
Median Home Value	\$624,303	\$613,804	\$575,253	\$624,223
Bachelors Degree	28.6%	28.0%	22.4%	26.8%
Graduate Degree	18.6%	19.0%	14.4%	24.2%

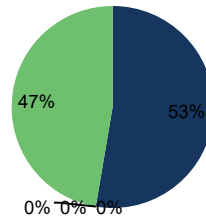
Projections (2026)

Projected Population	27,216	142,642	364,213	1,363,967
Projected 5 Year Pop Growth	0.3%	0.3%	0.1%	0.2%
Projected Households	11,639	60,880	141,348	557,686
Projected 5 Year Household Growth	0.4%	0.3%	0.1%	0.3%



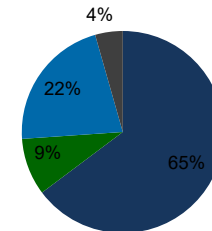
Education (3-Mile)

- Some College
- Associate
- Bachelor
- Graduate
- Other



Daytime Population (3-Mile)

- Workplace
- Retired
- Disabled
- Students
- Other

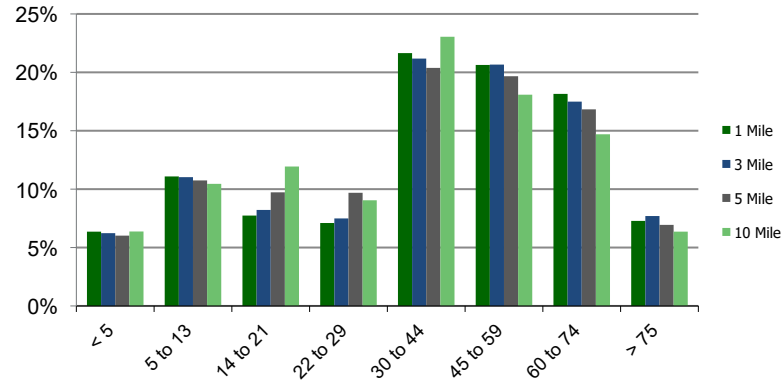


Ethnicity (3-Mile)

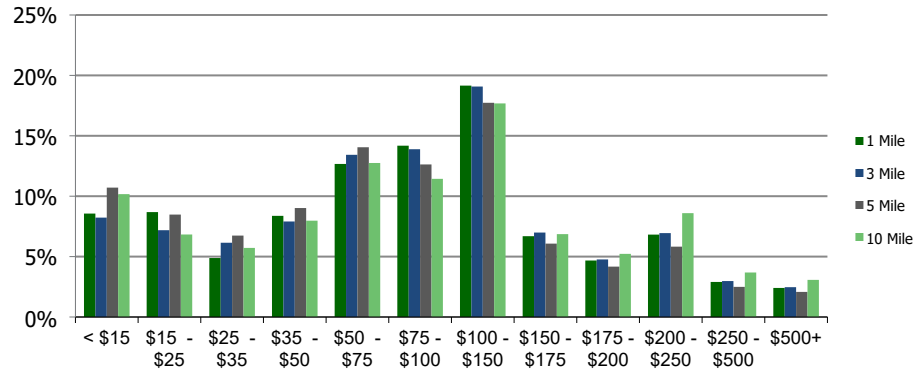
- White
- Black
- Asian
- Other

This report was produced using data from private and government sources deemed to be reliable and is herein provided without representation or warranty.

Population by Age Range



Household Income by Income Range (\$000)



117300-Adams Plaza Quincy, MA	1.00 Mile Radius	3.00 Mile Radius	5.00 Mile Radius	10.00 Mile Radius
----------------------------------	---------------------	---------------------	---------------------	----------------------

Population	Current Estimated Population	26,777	140,833	362,793	1,347,704
	2010 Census Population	24,310	129,636	337,542	1,237,349
	2000 Census Population	23,045	126,056	336,276	1,192,488
	Historical Annual Growth 2000 to 2010	0.54%	0.28%	0.04%	0.37%
	Estimated Annual Growth 2010 to 2020	0.83%	0.71%	0.62%	0.73%
	Projected Annual Growth 2020 to 2025	0.33%	0.26%	0.08%	0.24%
Households	Current Estimated Households	11,426	59,971	140,574	549,762
	2010 Census Households	10,291	54,839	130,282	500,696
	2000 Census Households	9,698	52,957	125,985	479,799
	Historical Annual Growth 2000 to 2010	0.6%	0.3%	0.3%	0.4%
	Estimated Annual Growth 2010 to 2020	0.9%	0.8%	0.6%	0.8%
	Projected Annual Growth 2020 to 2025	0.4%	0.3%	0.1%	0.3%
	Population per Household	2.3	2.3	2.5	2.3
Ethnicity	White	67.3%	64.8%	48.2%	63.7%
	Black or African American	5.2%	9.2%	29.3%	15.9%
	Asian & Pacific Islander	24.0%	21.7%	13.3%	10.8%
	Other Races	3.5%	4.4%	9.1%	9.5%
	Hispanic or Latino Population	3.2%	4.1%	11.1%	13.2%
	Non Hispanic or Latino Population	96.8%	95.9%	88.9%	86.8%

This report was produced using data from private and government sources deemed to be reliable and is herein provided without representation or warranty.