

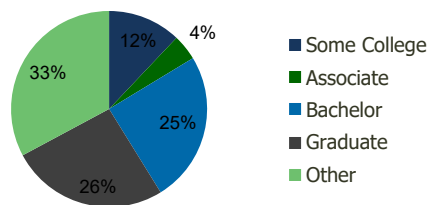
117240-Fellsway at 630 Medford, MA	1.00 Mile Radius	3.00 Mile Radius	5.00 Mile Radius	10.00 Mile Radius
---------------------------------------	---------------------	---------------------	---------------------	----------------------

Demographics (2020)

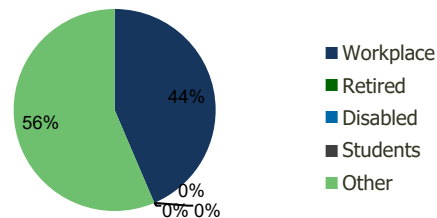
Current Population	26,312	372,132	864,523	1,855,839
Total Daytime Pop	22,021	427,919	1,466,830	2,547,116
Workplace Pop	10,095	186,477	806,999	1,291,764
Average Household Income	\$102,362	\$113,838	\$128,172	\$124,714
Median Household Income	\$82,227	\$86,535	\$90,449	\$89,168
Total Housing Units	10,958	154,415	362,272	753,281
Median Home Value	\$563,332	\$611,108	\$637,670	\$614,585
Bachelors Degree	23.5%	24.9%	26.7%	26.1%
Graduate Degree	20.3%	26.0%	29.2%	26.7%

Projections (2025)

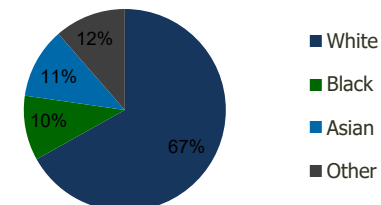
Projected Population	27,254	379,358	887,144	1,886,330
Projected 5 Year Pop Growth	0.7%	0.4%	0.5%	0.3%
Projected Households	11,396	157,659	373,257	767,760
Projected 5 Year Household Growth	0.8%	0.4%	0.6%	0.4%



Education (3-Mile)



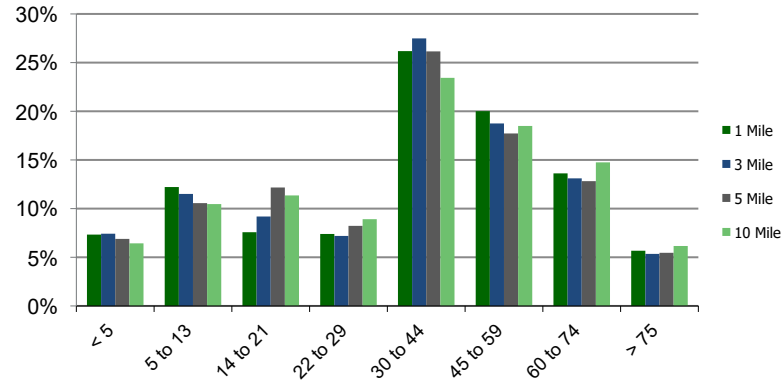
Daytime Population (3-Mile)



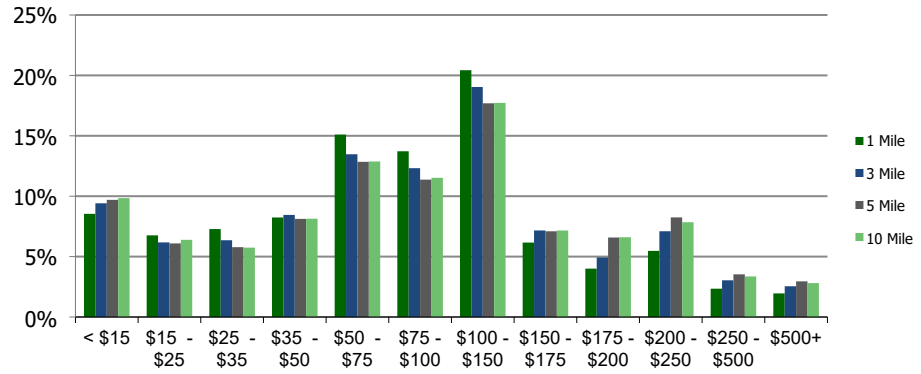
Ethnicity (3-Mile)

This report was produced using data from private and government sources deemed to be reliable and is herein provided without representation or warranty.

Population by Age Range



Household Income by Income Range (\$000)



117240-Fellsway at 630
Medford, MA

1.00 Mile
Radius

3.00 Mile
Radius

5.00 Mile
Radius

10.00 Mile
Radius

	1.00 Mile Radius	3.00 Mile Radius	5.00 Mile Radius	10.00 Mile Radius
Population	Current Estimated Population	26,312	372,132	864,523
	2010 Census Population	22,992	343,005	782,869
	2000 Census Population	21,167	337,058	742,591
	Historical Annual Growth 2000 to 2010	0.83%	0.18%	0.53%
	Estimated Annual Growth 2010 to 2020	1.26%	0.76%	0.93%
	Projected Annual Growth 2020 to 2025	0.71%	0.39%	0.52%
Households	Current Estimated Households	10,958	154,415	362,272
	2010 Census Households	9,424	141,634	324,024
	2000 Census Households	8,460	138,802	311,867
	Historical Annual Growth 2000 to 2010	1.1%	0.2%	0.4%
	Estimated Annual Growth 2010 to 2020	1.4%	0.8%	1.0%
	Projected Annual Growth 2020 to 2025	0.8%	0.4%	0.6%
	Population per Household	2.4	2.3	2.2
Ethnicity	White	64.2%	66.9%	69.5%
	Black or African American	13.5%	10.4%	8.0%
	Asian & Pacific Islander	12.7%	11.3%	12.2%
	Other Races	9.6%	11.4%	10.4%
	Hispanic or Latino Population	10.6%	16.3%	15.6%
	Non Hispanic or Latino Population	89.4%	83.7%	84.4%

This report was produced using data from private and government sources deemed to be reliable and is herein provided without representation or warranty.