

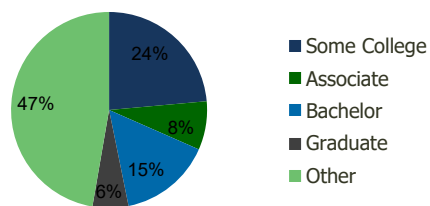
100370-Covina Town Square Covina, CA	1.00 Mile Radius	3.00 Mile Radius	5.00 Mile Radius	10.00 Mile Radius
---	---------------------	---------------------	---------------------	----------------------

Demographics (2019)

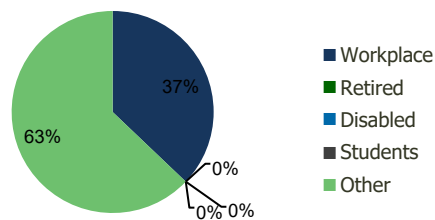
Current Population	34,389	192,610	407,481	1,226,853
Total Daytime Pop	24,385	219,906	417,179	1,347,187
Workplace Pop	6,230	81,609	148,737	484,301
Average Household Income	\$76,155	\$85,892	\$92,902	\$94,046
Median Household Income	\$65,038	\$69,336	\$74,678	\$72,619
Total Housing Units	8,997	56,376	118,631	356,325
Median Home Value	\$587,180	\$654,215	\$688,156	\$758,973
Bachelors Degree	11.6%	15.2%	17.0%	19.4%
Graduate Degree	3.1%	5.9%	7.2%	8.6%

Projections (2023)

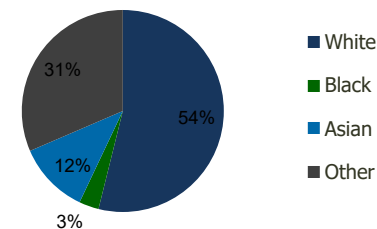
Projected Population	35,818	200,811	421,504	1,264,510
Projected 5 Year Pop Growth	0.8%	0.8%	0.7%	0.6%
Projected Households	9,359	58,830	122,839	367,486
Projected 5 Year Household Growth	0.8%	0.9%	0.7%	0.6%



Education (3-Mile)



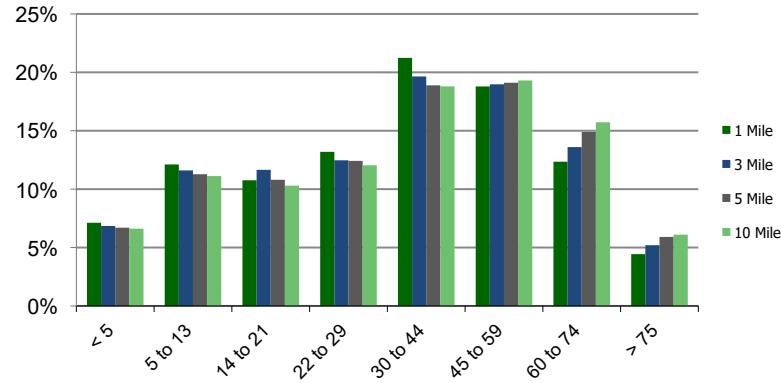
Daytime Population (3-Mile)



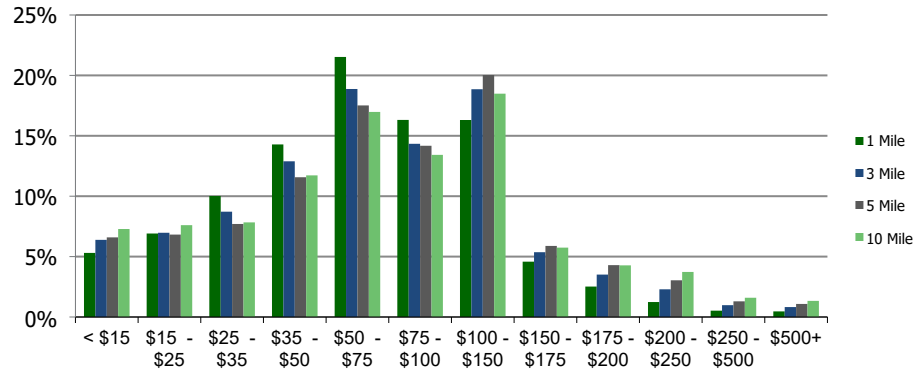
Ethnicity (3-Mile)

This report was produced using data from private and government sources deemed to be reliable and is herein provided without representation or warranty.

Population by Age Range



Household Income by Income Range (\$000)



100370-Covina Town Square
Covina, CA

1.00 Mile
Radius

3.00 Mile
Radius

5.00 Mile
Radius

10.00 Mile
Radius

	1.00 Mile Radius	3.00 Mile Radius	5.00 Mile Radius	10.00 Mile Radius
Population	Current Estimated Population	34,389	192,610	407,481
	2010 Census Population	32,858	183,277	393,641
	2000 Census Population	31,934	178,569	385,773
	Historical Annual Growth 2000 to 2010	0.29%	0.26%	0.20%
	Estimated Annual Growth 2010 to 2012	0.47%	0.51%	0.36%
	Projected Annual Growth 2012 to 2019	0.82%	0.84%	0.68%
Households	Current Estimated Households	8,997	56,376	118,631
	2010 Census Households	8,625	53,501	114,294
	2000 Census Households	8,528	53,078	112,419
	Historical Annual Growth 2000 to 2010	0.1%	0.1%	0.2%
	Estimated Annual Growth 2010 to 2012	0.4%	0.5%	0.4%
	Projected Annual Growth 2012 to 2019	0.8%	0.9%	0.7%
	Population per Household	3.8	3.3	3.4
Ethnicity	White	50.7%	53.9%	52.8%
	Black or African American	3.0%	3.2%	3.1%
	Asian & Pacific Islander	9.1%	11.5%	14.5%
	Other Races	37.2%	31.5%	29.6%
	Hispanic or Latino Population	73.3%	62.4%	58.6%
	Non Hispanic or Latino Population	26.7%	37.6%	41.4%

This report was produced using data from private and government sources deemed to be reliable and is herein provided without representation or warranty.