

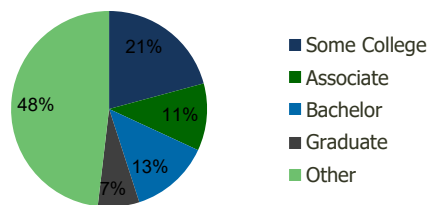
103400-Ives Dairy Crossing North Miami Beach, FL	1.00 Mile Radius	3.00 Mile Radius	5.00 Mile Radius	10.00 Mile Radius
---	---------------------	---------------------	---------------------	----------------------

## Demographics (2020)

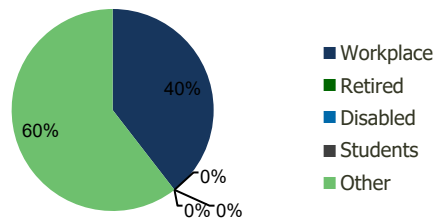
Current Population	23,497	184,615	536,666	1,536,522
Total Daytime Pop	23,123	174,791	530,649	1,555,892
Workplace Pop	11,393	69,068	216,810	597,047
Average Household Income	\$62,053	\$63,320	\$68,559	\$74,911
Median Household Income	\$52,319	\$48,215	\$49,056	\$52,377
Total Housing Units	8,557	61,783	189,024	557,087
Median Home Value	\$305,646	\$327,781	\$355,465	\$401,021
Bachelors Degree	13.6%	13.1%	14.2%	16.5%
Graduate Degree	7.5%	6.8%	7.8%	9.5%

## Projections (2025)

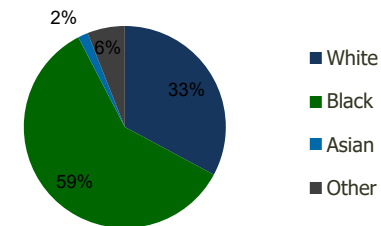
Projected Population	24,086	186,619	545,516	1,576,331
Projected 5 Year Pop Growth	0.5%	0.2%	0.3%	0.5%
Projected Households	8,770	62,567	192,712	572,445
Projected 5 Year Household Growth	0.5%	0.3%	0.4%	0.5%



Education (3-Mile)



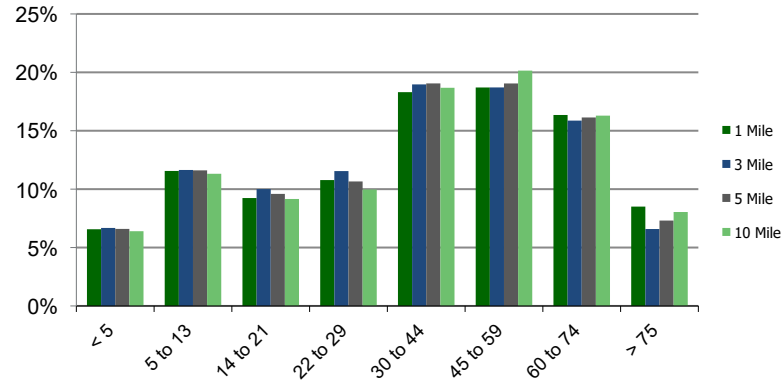
Daytime Population (3-Mile)



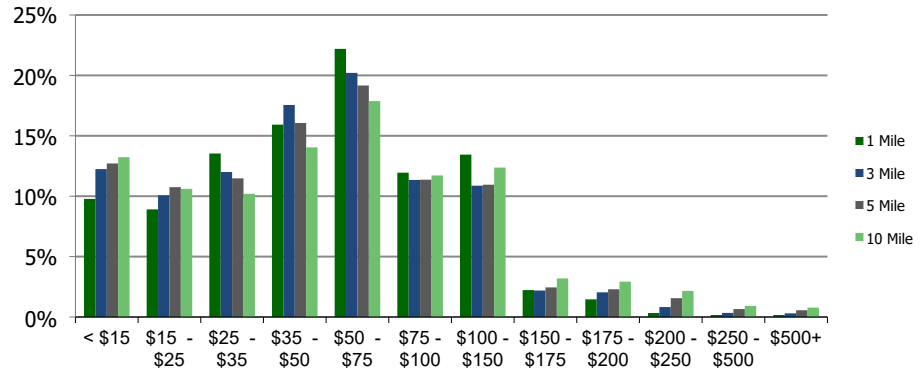
Ethnicity (3-Mile)

This report was produced using data from private and government sources deemed to be reliable and is herein provided without representation or warranty.

### Population by Age Range



### Household Income by Income Range (\$000)



103400-Ives Dairy Crossing North Miami Beach, FL	1.00 Mile Radius	3.00 Mile Radius	5.00 Mile Radius	10.00 Mile Radius
---	------------------	------------------	------------------	-------------------

<b>Population</b>	Current Estimated Population	23,497	184,615	536,666	1,536,522
	2010 Census Population	22,582	178,365	510,585	1,426,080
	2000 Census Population	19,688	167,849	479,856	1,328,659
	Historical Annual Growth 2000 to 2010	1.38%	0.61%	0.62%	0.71%
	Estimated Annual Growth 2010 to 2020	0.37%	0.32%	0.46%	0.70%
	Projected Annual Growth 2020 to 2025	0.50%	0.22%	0.33%	0.51%
<b>Households</b>	Current Estimated Households	8,557	61,783	189,024	557,087
	2010 Census Households	8,236	59,509	178,893	514,546
	2000 Census Households	7,156	56,802	170,215	485,438
	Historical Annual Growth 2000 to 2010	1.4%	0.5%	0.5%	0.6%
	Estimated Annual Growth 2010 to 2020	0.4%	0.3%	0.5%	0.7%
	Projected Annual Growth 2020 to 2025	0.5%	0.3%	0.4%	0.5%
	Population per Household	2.7	3.0	2.8	2.7
<b>Ethnicity</b>	White	24.7%	32.8%	43.6%	60.4%
	Black or African American	69.6%	59.5%	48.2%	30.5%
	Asian & Pacific Islander	1.5%	1.6%	1.7%	2.1%
	Other Races	4.2%	6.0%	6.5%	6.9%
	Hispanic or Latino Population	19.3%	25.2%	31.2%	46.0%
	Non Hispanic or Latino Population	80.7%	74.8%	68.8%	54.0%

This report was produced using data from private and government sources deemed to be reliable and is herein provided without representation or warranty.