

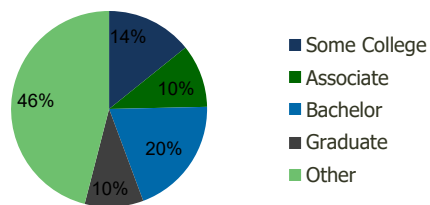
| 101340-Coral Way Plaza<br>Miami, FL | 1.00 Mile<br>Radius | 3.00 Mile<br>Radius | 5.00 Mile<br>Radius | 10.00 Mile<br>Radius |
|-------------------------------------|---------------------|---------------------|---------------------|----------------------|
|-------------------------------------|---------------------|---------------------|---------------------|----------------------|

### Demographics (2020)

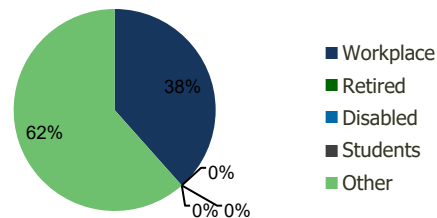
|                          |           |           |           |           |
|--------------------------|-----------|-----------|-----------|-----------|
| Current Population       | 23,902    | 198,797   | 462,685   | 1,544,103 |
| Total Daytime Pop        | 23,080    | 280,370   | 665,779   | 1,961,535 |
| Workplace Pop            | 7,171     | 107,728   | 328,368   | 865,517   |
| Average Household Income | \$76,050  | \$76,135  | \$88,256  | \$85,078  |
| Median Household Income  | \$60,955  | \$55,971  | \$60,671  | \$56,292  |
| Total Housing Units      | 7,638     | 66,166    | 160,724   | 538,576   |
| Median Home Value        | \$547,529 | \$471,559 | \$498,690 | \$482,999 |
| Bachelors Degree         | 20.7%     | 19.7%     | 21.5%     | 20.0%     |
| Graduate Degree          | 7.8%      | 9.7%      | 13.1%     | 12.2%     |

### Projections (2025)

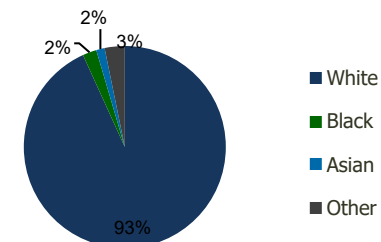
|                                   |        |         |         |           |
|-----------------------------------|--------|---------|---------|-----------|
| Projected Population              | 23,944 | 201,834 | 477,100 | 1,608,587 |
| Projected 5 Year Pop Growth       | 0.0%   | 0.3%    | 0.6%    | 0.8%      |
| Projected Households              | 7,650  | 67,172  | 165,865 | 565,005   |
| Projected 5 Year Household Growth | 0.0%   | 0.3%    | 0.6%    | 1.0%      |



Education (3-Mile)



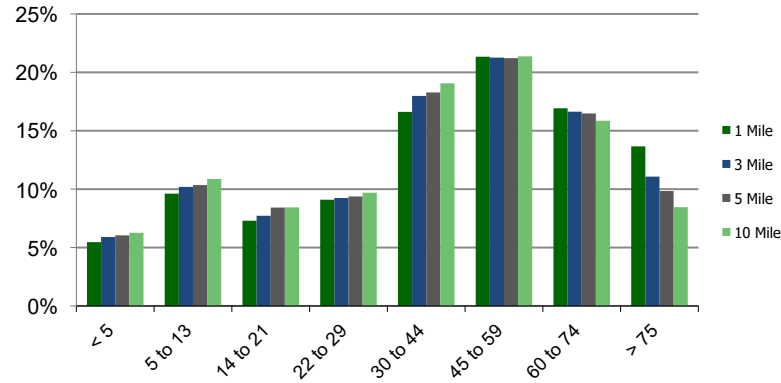
Daytime Population (3-Mile)



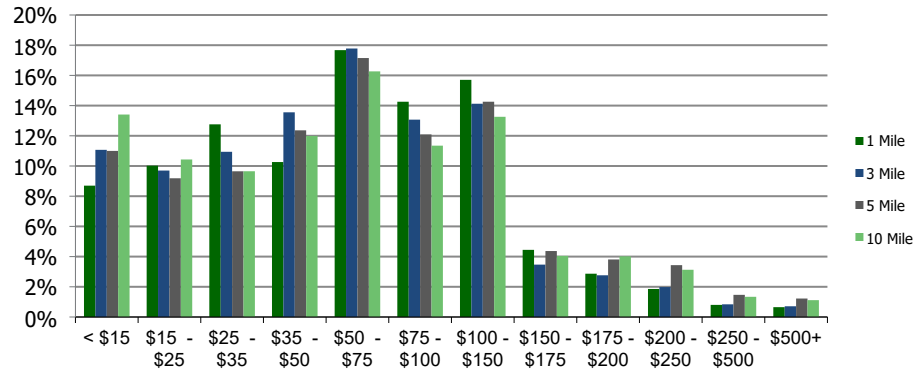
Ethnicity (3-Mile)

This report was produced using data from private and government sources deemed to be reliable and is herein provided without representation or warranty.

**Population by Age Range**



**Household Income by Income Range (\$000)**



| 101340-Coral Way Plaza<br>Miami, FL | 1.00 Mile Radius | 3.00 Mile Radius | 5.00 Mile Radius | 10.00 Mile Radius |
|-------------------------------------|------------------|------------------|------------------|-------------------|
|-------------------------------------|------------------|------------------|------------------|-------------------|

|                   |                                       |        |         |         |           |
|-------------------|---------------------------------------|--------|---------|---------|-----------|
| <b>Population</b> | Current Estimated Population          | 23,902 | 198,797 | 462,685 | 1,544,103 |
|                   | 2010 Census Population                | 23,242 | 197,013 | 441,784 | 1,434,657 |
|                   | 2000 Census Population                | 23,367 | 195,091 | 429,837 | 1,322,773 |
|                   | Historical Annual Growth 2000 to 2010 | -0.05% | 0.10%   | 0.27%   | 0.82%     |
|                   | Estimated Annual Growth 2010 to 2020  | 0.26%  | 0.08%   | 0.43%   | 0.69%     |
|                   | Projected Annual Growth 2020 to 2025  | 0.04%  | 0.30%   | 0.62%   | 0.82%     |
| <b>Households</b> | Current Estimated Households          | 7,638  | 66,166  | 160,724 | 538,576   |
|                   | 2010 Census Households                | 7,423  | 65,729  | 153,402 | 494,769   |
|                   | 2000 Census Households                | 7,556  | 65,210  | 148,853 | 447,655   |
|                   | Historical Annual Growth 2000 to 2010 | -0.2%  | 0.1%    | 0.3%    | 1.0%      |
|                   | Estimated Annual Growth 2010 to 2020  | 0.3%   | 0.1%    | 0.4%    | 0.8%      |
|                   | Projected Annual Growth 2020 to 2025  | 0.0%   | 0.3%    | 0.6%    | 1.0%      |
|                   | Population per Household              | 3.1    | 2.9     | 2.8     | 2.8       |
| <b>Ethnicity</b>  | White                                 | 94.7%  | 93.2%   | 91.8%   | 84.7%     |
|                   | Black or African American             | 2.0%   | 2.2%    | 2.8%    | 8.6%      |
|                   | Asian & Pacific Islander              | 0.6%   | 1.3%    | 1.8%    | 1.7%      |
|                   | Other Races                           | 2.7%   | 3.2%    | 3.5%    | 5.1%      |
|                   | Hispanic or Latino Population         | 90.8%  | 89.3%   | 83.1%   | 78.0%     |
|                   | Non Hispanic or Latino Population     | 9.2%   | 10.7%   | 16.9%   | 22.0%     |

This report was produced using data from private and government sources deemed to be reliable and is herein provided without representation or warranty.