

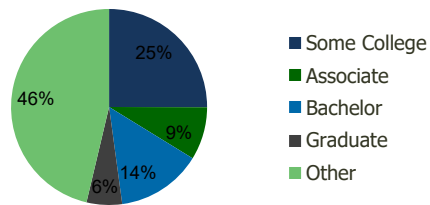
114191-Lakewood Plaza Bellflower, CA	1.00 Mile Radius	3.00 Mile Radius	5.00 Mile Radius	10.00 Mile Radius
---	---------------------	---------------------	---------------------	----------------------

Demographics (2021)

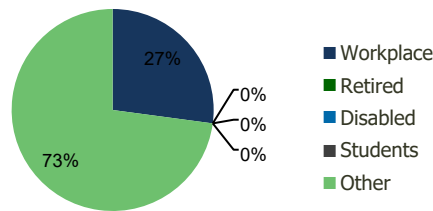
Current Population	42,950	287,466	701,832	2,656,749
Total Daytime Pop	23,475	288,748	709,875	2,684,571
Workplace Pop	6,288	78,302	220,268	928,850
Average Household Income	\$78,565	\$85,466	\$89,749	\$86,518
Median Household Income	\$63,545	\$69,708	\$72,066	\$66,763
Total Housing Units	12,882	85,767	202,770	776,581
Median Home Value	\$633,677	\$701,261	\$708,731	\$700,069
Bachelors Degree	12.4%	14.1%	15.2%	14.9%
Graduate Degree	4.5%	5.9%	6.6%	6.6%

Projections (2026)

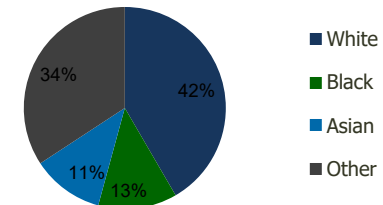
Projected Population	43,718	290,924	709,359	2,686,747
Projected 5 Year Pop Growth	0.4%	0.2%	0.2%	0.2%
Projected Households	13,120	86,791	204,919	785,177
Projected 5 Year Household Growth	0.4%	0.2%	0.2%	0.2%



Education (3-Mile)



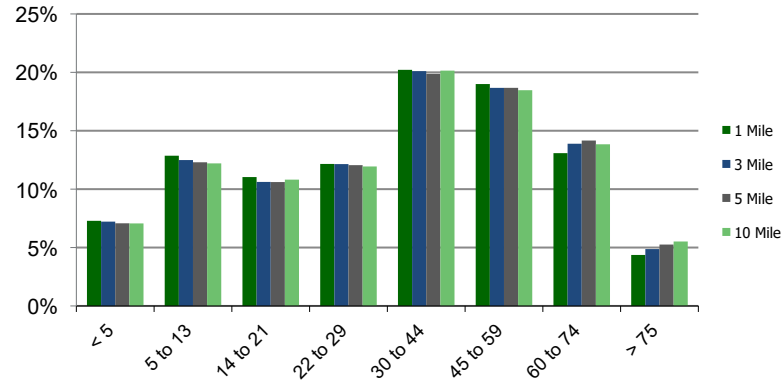
Daytime Population (3-Mile)



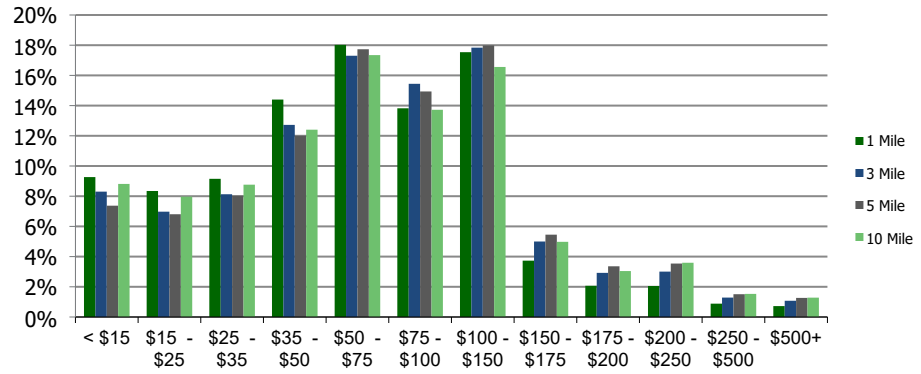
Ethnicity (3-Mile)

This report was produced using data from private and government sources deemed to be reliable and is herein provided without representation or warranty.

Population by Age Range



Household Income by Income Range (\$000)



114191-Lakewood Plaza Bellflower, CA		1.00 Mile Radius	3.00 Mile Radius	5.00 Mile Radius	10.00 Mile Radius
--	--	------------------	------------------	------------------	-------------------

Population	Current Estimated Population	42,950	287,466	701,832	2,656,749
	2010 Census Population	41,677	286,963	702,643	2,624,574
	2000 Census Population	39,746	281,364	690,593	2,580,682
	Historical Annual Growth 2000 to 2010	0.48%	0.20%	0.17%	0.17%
	Estimated Annual Growth 2010 to 2020	0.26%	0.01%	-0.01%	0.10%
	Projected Annual Growth 2020 to 2025	0.36%	0.24%	0.21%	0.22%
Households	Current Estimated Households	12,882	85,767	202,770	776,581
	2010 Census Households	12,485	85,720	202,982	766,420
	2000 Census Households	12,338	85,734	202,127	758,191
	Historical Annual Growth 2000 to 2010	0.1%	0.0%	0.0%	0.1%
	Estimated Annual Growth 2010 to 2020	0.3%	0.0%	0.0%	0.1%
	Projected Annual Growth 2020 to 2025	0.4%	0.2%	0.2%	0.2%
	Population per Household	3.3	3.3	3.4	3.4
Ethnicity	White	36.8%	41.6%	43.4%	46.9%
	Black or African American	15.9%	12.6%	11.0%	10.0%
	Asian & Pacific Islander	11.1%	11.5%	12.1%	11.5%
	Other Races	36.3%	34.2%	33.6%	31.6%
	Hispanic or Latino Population	53.8%	54.8%	57.7%	60.6%
	Non Hispanic or Latino Population	46.2%	45.2%	42.3%	39.4%

This report was produced using data from private and government sources deemed to be reliable and is herein provided without representation or warranty.