

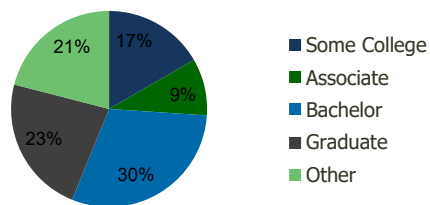
1742-Main St. Plaza Chatham,MA	1.00 Mile Radius	3.00 Mile Radius	5.00 Mile Radius	10.00 Mile Radius
-----------------------------------	---------------------	---------------------	---------------------	----------------------

Demographics (2018)

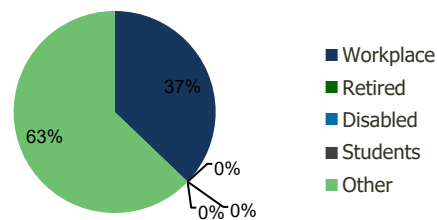
Current Population	1,312	9,966	18,036	51,828
Total Daytime Pop	946	8,308	15,964	46,306
Workplace Pop	421	3,086	5,235	16,790
Average Household Income	\$121,514	\$112,072	\$102,759	\$92,436
Median Household Income	\$78,527	\$78,351	\$76,337	\$67,912
Total Housing Units	638	4,802	8,592	24,611
Median Home Value	\$711,802	\$661,145	\$617,722	\$584,877
Bachelors Degree	31.4%	30.1%	29.7%	27.8%
Graduate Degree	22.8%	22.9%	21.8%	20.1%

Projections (2023)

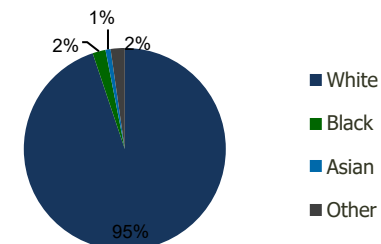
Projected Population	1,313	10,101	18,342	52,857
Projected 5 Year Pop Growth	0.0%	0.3%	0.3%	0.4%
Projected Households	639	4,866	8,736	25,083
Projected 5 Year Household Growth	0.0%	0.3%	0.3%	0.4%



Education (3-Mile)



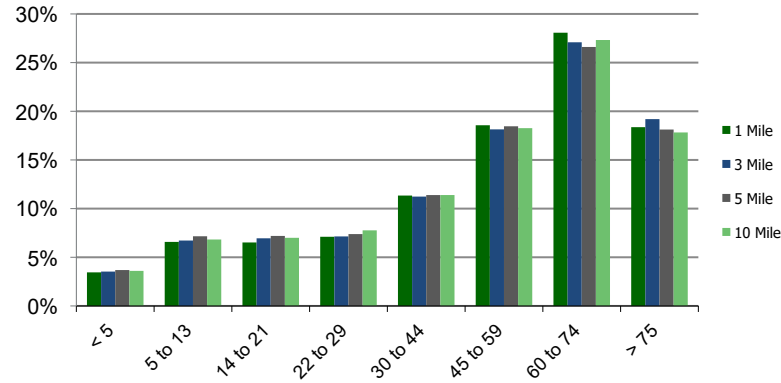
Daytime Population (3-Mile)



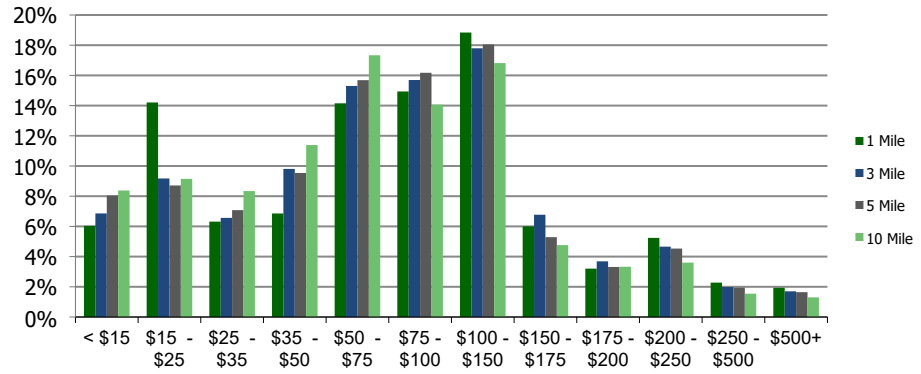
Ethnicity (3-Mile)

This report was produced using data from private and government sources deemed to be reliable and is herein provided without representation or warranty.

Population by Age Range



Household Income by Income Range (\$000)



1742-Main St. Plaza
Chatham, MA

1.00 Mile
Radius

3.00 Mile
Radius

5.00 Mile
Radius

10.00 Mile
Radius

	1.00 Mile Radius	3.00 Mile Radius	5.00 Mile Radius	10.00 Mile Radius
Population				
Current Estimated Population	1,312	9,966	18,036	51,828
2010 Census Population	1,341	9,847	17,521	49,813
2000 Census Population	1,383	10,431	18,251	52,848
Historical Annual Growth 2000 to 2010	-0.31%	-0.57%	-0.41%	-0.59%
Estimated Annual Growth 2010 to 2012	-0.25%	0.14%	0.33%	0.45%
Projected Annual Growth 2012 to 2018	0.02%	0.27%	0.34%	0.39%
Households				
Current Estimated Households	638	4,802	8,592	24,611
2010 Census Households	653	4,752	8,358	23,670
2000 Census Households	665	4,784	8,266	23,910
Historical Annual Growth 2000 to 2010	-0.2%	-0.1%	0.1%	-0.1%
Estimated Annual Growth 2010 to 2012	-0.3%	0.1%	0.3%	0.4%
Projected Annual Growth 2012 to 2018	0.0%	0.3%	0.3%	0.4%
Population per Household	2.1	2.1	2.1	2.1
Ethnicity				
White	96.1%	94.8%	95.0%	94.7%
Black or African American	1.4%	2.1%	1.6%	1.8%
Asian & Pacific Islander	0.7%	0.8%	0.9%	0.8%
Other Races	1.8%	2.3%	2.5%	2.7%
Hispanic or Latino Population	1.6%	1.9%	2.0%	1.9%
Non Hispanic or Latino Population	98.4%	98.1%	98.0%	98.1%

This report was produced using data from private and government sources deemed to be reliable and is herein provided without representation or warranty.