

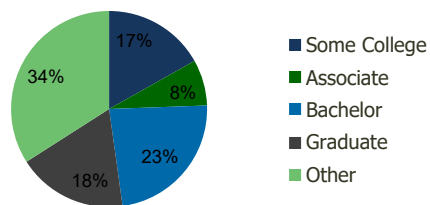
106560-Township Line S.C. Havertown, PA	1.00 Mile Radius	3.00 Mile Radius	5.00 Mile Radius	10.00 Mile Radius
--	---------------------	---------------------	---------------------	----------------------

Demographics (2020)

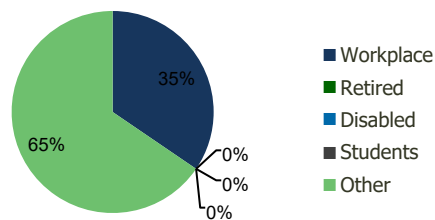
Current Population	24,869	211,059	558,551	1,715,863
Total Daytime Pop	21,806	166,961	500,156	2,258,533
Workplace Pop	6,493	57,630	165,898	1,017,475
Average Household Income	\$110,844	\$98,515	\$90,754	\$92,120
Median Household Income	\$81,835	\$68,430	\$58,587	\$59,148
Total Housing Units	9,373	81,030	214,216	687,907
Median Home Value	\$293,835	\$265,165	\$218,664	\$237,797
Bachelors Degree	26.7%	23.4%	19.7%	21.0%
Graduate Degree	18.0%	18.2%	16.6%	17.4%

Projections (2025)

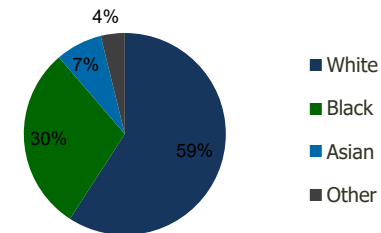
Projected Population	25,432	215,525	572,100	1,783,908
Projected 5 Year Pop Growth	0.4%	0.4%	0.5%	0.8%
Projected Households	9,587	82,791	219,722	718,677
Projected 5 Year Household Growth	0.5%	0.4%	0.5%	0.9%



Education (3-Mile)



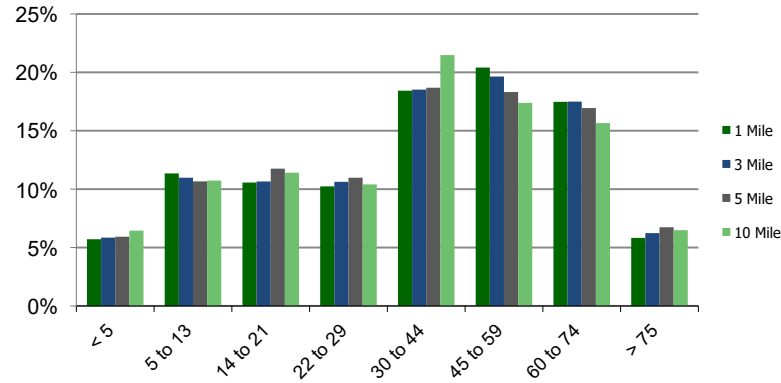
Daytime Population (3-Mile)



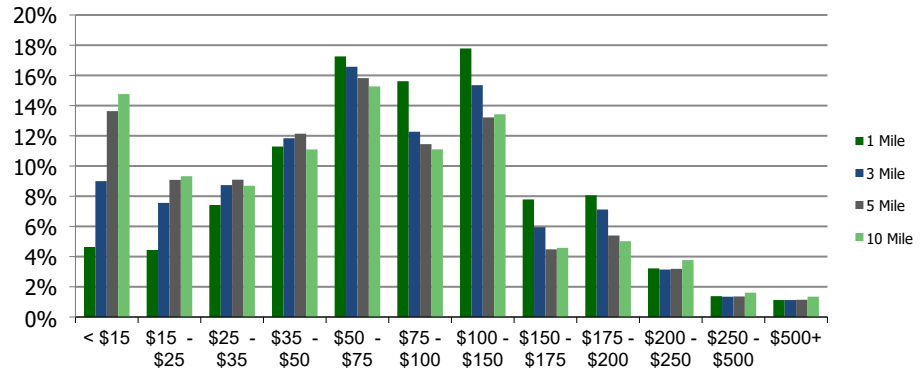
Ethnicity (3-Mile)

This report was produced using data from private and government sources deemed to be reliable and is herein provided without representation or warranty.

Population by Age Range



Household Income by Income Range (\$000)



106560-Township Line S.C. Havertown, PA	1.00 Mile Radius	3.00 Mile Radius	5.00 Mile Radius	10.00 Mile Radius
--	-----------------------------	-----------------------------	-----------------------------	------------------------------

Population	Current Estimated Population	24,869	211,059	558,551	1,715,863
	2010 Census Population	24,516	208,504	545,275	1,622,606
	2000 Census Population	24,659	208,961	558,965	1,636,799
	Historical Annual Growth 2000 to 2010	-0.06%	-0.02%	-0.25%	-0.09%
	Estimated Annual Growth 2010 to 2020	0.13%	0.11%	0.22%	0.52%
	Projected Annual Growth 2020 to 2025	0.45%	0.42%	0.48%	0.78%
Households	Current Estimated Households	9,373	81,030	214,216	687,907
	2010 Census Households	9,240	80,010	208,629	644,108
	2000 Census Households	9,405	81,413	212,370	635,905
	Historical Annual Growth 2000 to 2010	-0.2%	-0.2%	-0.2%	0.1%
	Estimated Annual Growth 2010 to 2020	0.1%	0.1%	0.2%	0.6%
	Projected Annual Growth 2020 to 2025	0.5%	0.4%	0.5%	0.9%
	Population per Household	2.6	2.6	2.5	2.4
Ethnicity	White	84.2%	59.1%	46.4%	49.6%
	Black or African American	7.0%	29.6%	44.8%	37.8%
	Asian & Pacific Islander	5.2%	7.5%	5.4%	6.1%
	Other Races	3.7%	3.8%	3.5%	6.5%
	Hispanic or Latino Population	3.1%	3.7%	3.1%	8.5%
	Non Hispanic or Latino Population	96.9%	96.3%	96.9%	91.5%

This report was produced using data from private and government sources deemed to be reliable and is herein provided without representation or warranty.